

LOC/DME I-LRD <b>111.9</b> Chan 56	APP CRS <b>178°</b>	Rwy Idg <b>8743 8236</b>	18R <b>504 499</b>	18L <b>508 508</b>
		TDZE		
		Apt Elev		

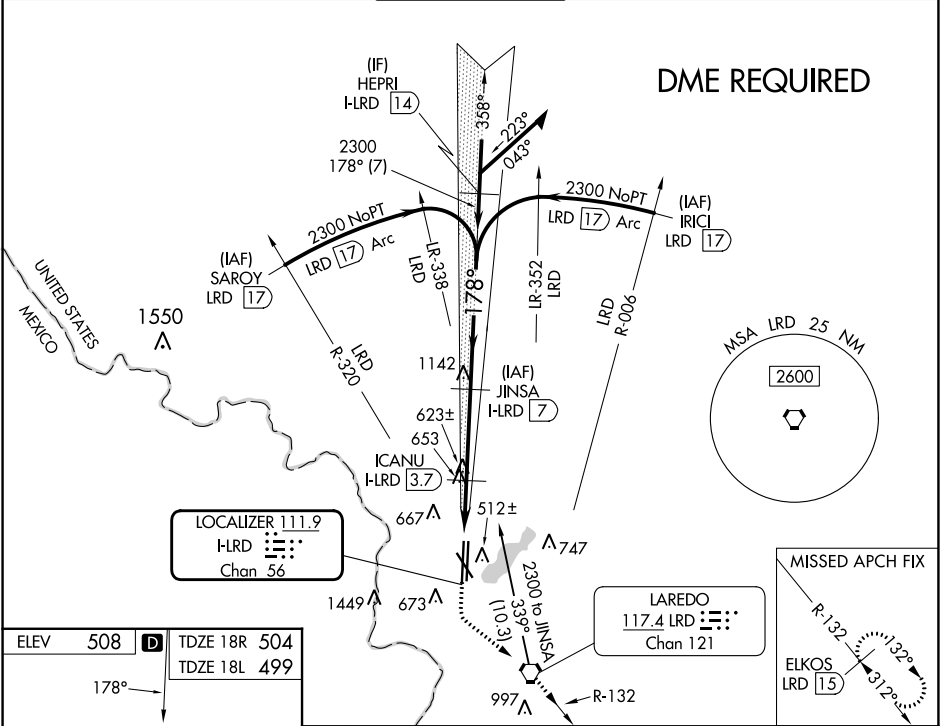
# ILS or LOC RWY 18R

LAREDO INTL (L.R.D)

**⚠** Circling NA west of Rwy 14 and 36L.  
DME required.  
For inop ALS, increase S-ILS 18R Cat E visibility to 3/4 SM and increase S-LOC 18R Cat C/D/E visibility to 1 1/2 SM.

**MALSR**  
**AS**  
MISSED APPROACH: Climb to 1100 then climbing left turn to 2500 direct LRD VORTAC and on LRD VORTAC R-132 to ELKOS/LRD 15 DME and hold.

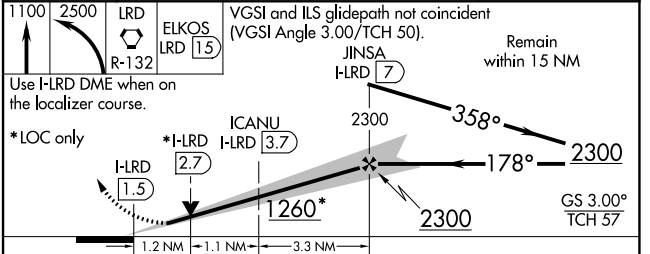
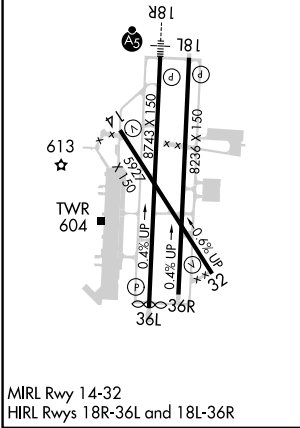
ATIS <b>125.775</b>	HOUSTON CENTER <b>127.8 307.2</b>	LAREDO TOWER ★ <b>120.1(CTAF) 0 257.9</b>	GND CON <b>121.8</b>	UNICOM <b>122.95</b>
------------------------	--------------------------------------	--	-------------------------	-------------------------



SC-3, 03 OCT 2024 to 31 OCT 2024

SC-3, 03 OCT 2024 to 31 OCT 2024

ELEV 508	<b>D</b> TDZE 18R 504
	TDZE 18L 499



CATEGORY	A	B	C	D	E
S-ILS 18R	704-1/2		200 (200-1/2)		
S-LOC 18R	920-1/2	416 (500-1/2)	920-3/4	416 (500-3/4)	
SIDESTEP 18L	920-1	421 (500-1)	920-1 1/2	920-2	421 (500-2)
			421 (500-1 1/2)		
<b>C</b> CIRCLING	940-1	980-1	1100-1 1/2	1200-2 1/4	1200-2 1/2
	432 (500-1)	472 (500-1)	592 (600-1 1/2)	692 (700-2 1/4)	692 (700-2 1/2)