

WAAS CH <b>86421</b> <b>W28A</b>	APP CRS <b>282°</b>	Rwy Idg <b>4184</b> TDZE <b>430</b> Apt Elev <b>437</b>
--	------------------------	---

# RNAV (GPS) RWY 28

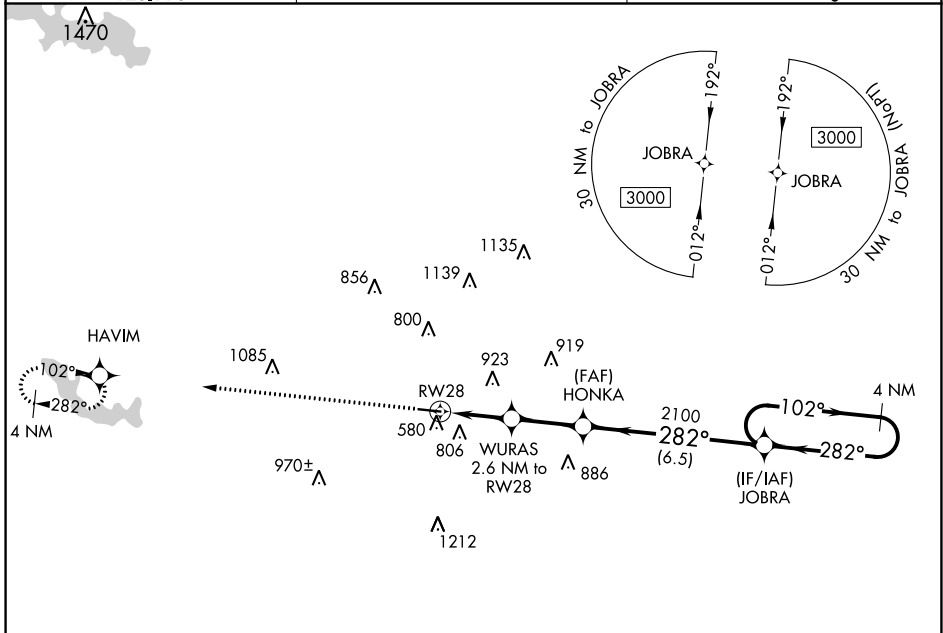
MACON DOWNTOWN (MAC)

RNP APCH-GPS.

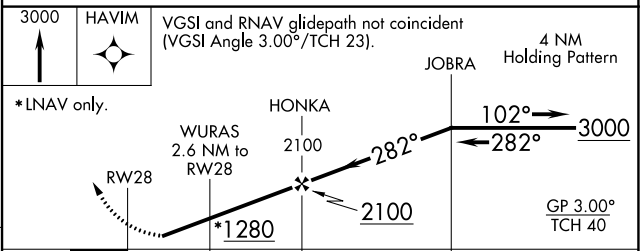
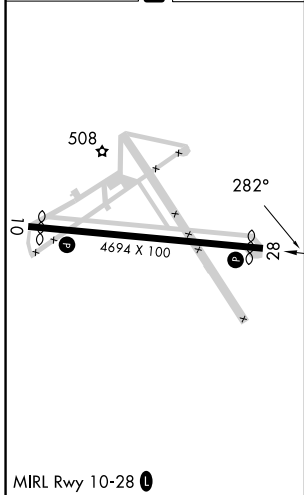
**⚠** Baro-VNAV NA. Rwy 28 helicopter visibility reduction below  $\frac{3}{4}$  SM NA.  
**⚠** NA Use Middle Georgia altimeter setting, when not received, use Robbins AFB altimeter setting and increase LPV DA to 726 feet, increase LNAV/VNAV DA to 1063 feet and increase all MDAs 20 feet.

MISSED APPROACH: Climb to 3000 direct HAVIM and hold.

MCN ASOS <b>120.775</b>	ATLANTA APP CON* <b>124.2 279.6</b>	UNICOM <b>123.0 (CTAF) 1</b>
----------------------------	--	---------------------------------



ELEV <b>437</b>	<b>D</b>	TDZE <b>430</b>
-----------------	----------	-----------------



CATEGORY	A	B	C	D
LPV DA		712-1	282 (300-1)	
LNAV/VNAV DA		1049-2½	619 (700-2½)	
LNAV MDA	980-1	550 (600-1)	980-1⅝	550 (600-1⅝)
<b>C</b> CIRCLING	1200-1	763 (800-1)	1320-2¾ 883 (900-2¾)	1480-3 1043 (1100-3)

SE-4, 03 OCT 2024 to 31 OCT 2024

SE-4, 03 OCT 2024 to 31 OCT 2024