

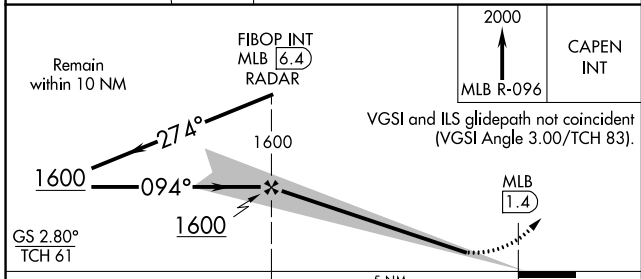
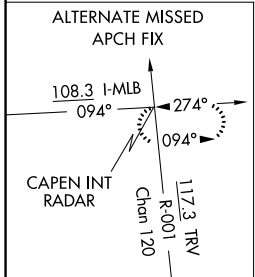
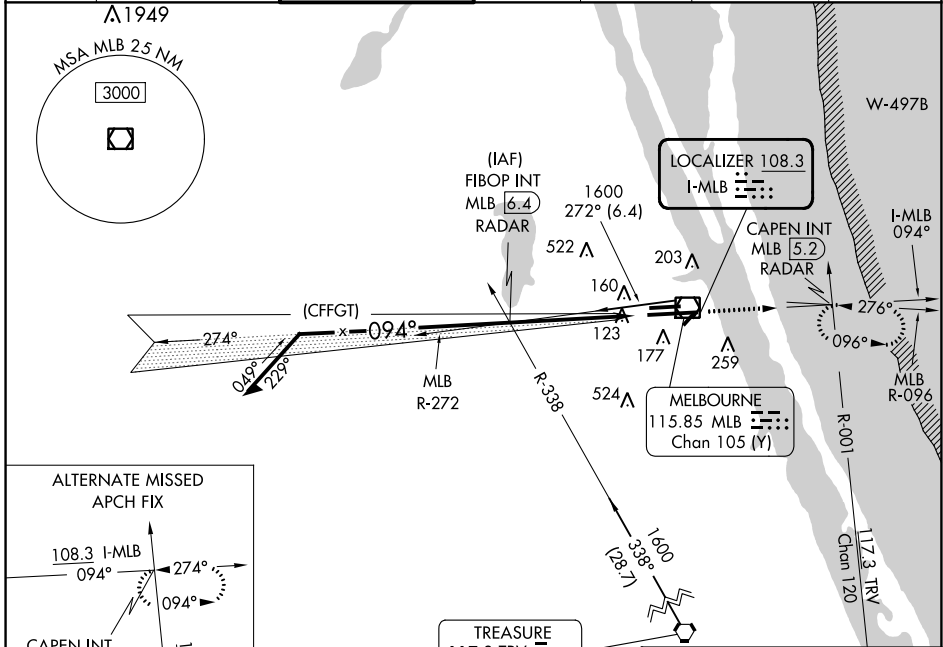
LOC I-MLB <b>108.3</b>	APP CRS <b>094°</b>	Rwy Idg <b>10181</b>
		TDZE <b>32</b>
		Apt Elev <b>33</b>

# ILS or LOC RWY 9R

MELBOURNE ORLANDO INTL (MLB)

DME or RADAR required.		MALSRR	MISSED APPROACH: Climb to 2000 on MLB VOR/DME R-096 to CAPEN INT/MLB VOR/DME 5.2 DME/RADAR and hold.			

ATIS <b>132.55</b>	ORLANDO APP CON <b>132.65 281.425</b>	MELBOURNE TOWER ★ <b>118.2 (CTAF) 257.8</b>	GND CON <b>121.9</b>	CLNC DEL <b>121.9</b>	CLNC DEL <b>132.65</b> (When twr closed)	UNICOM <b>122.95</b>
-----------------------	--	--	-------------------------	--------------------------	--	-------------------------



ELEV 33	TDZE 32
---------	---------

CATEGORY	A	B	C	D
S-ILS 9R		232/18	200 (200-½)	
S-LOC 9R	420/24	388 (400-½)	420/35	388 (400-⅝)
CIRCLING	500-1 467 (500-1)	560-1 527 (600-1)	680-1¾ 647 (700-1¾)	880-2¾ 847 (900-2¾)

Diagram details: REIL Rwy 27L, HIRL Rwy 9R-27L, MIRL Rwy 5-23 and 9L-27R, TDZ/CL Rwy 9R, FAF to MAP 5 NM, Knots 60 90 120 150 180, Min:Sec 5:00 3:20 2:30 2:00 1:40.

SE-3, 03 OCT 2024 to 31 OCT 2024

SE-3, 03 OCT 2024 to 31 OCT 2024