

# AGUDE FIVE ARRIVAL

AL-263 (FAA)

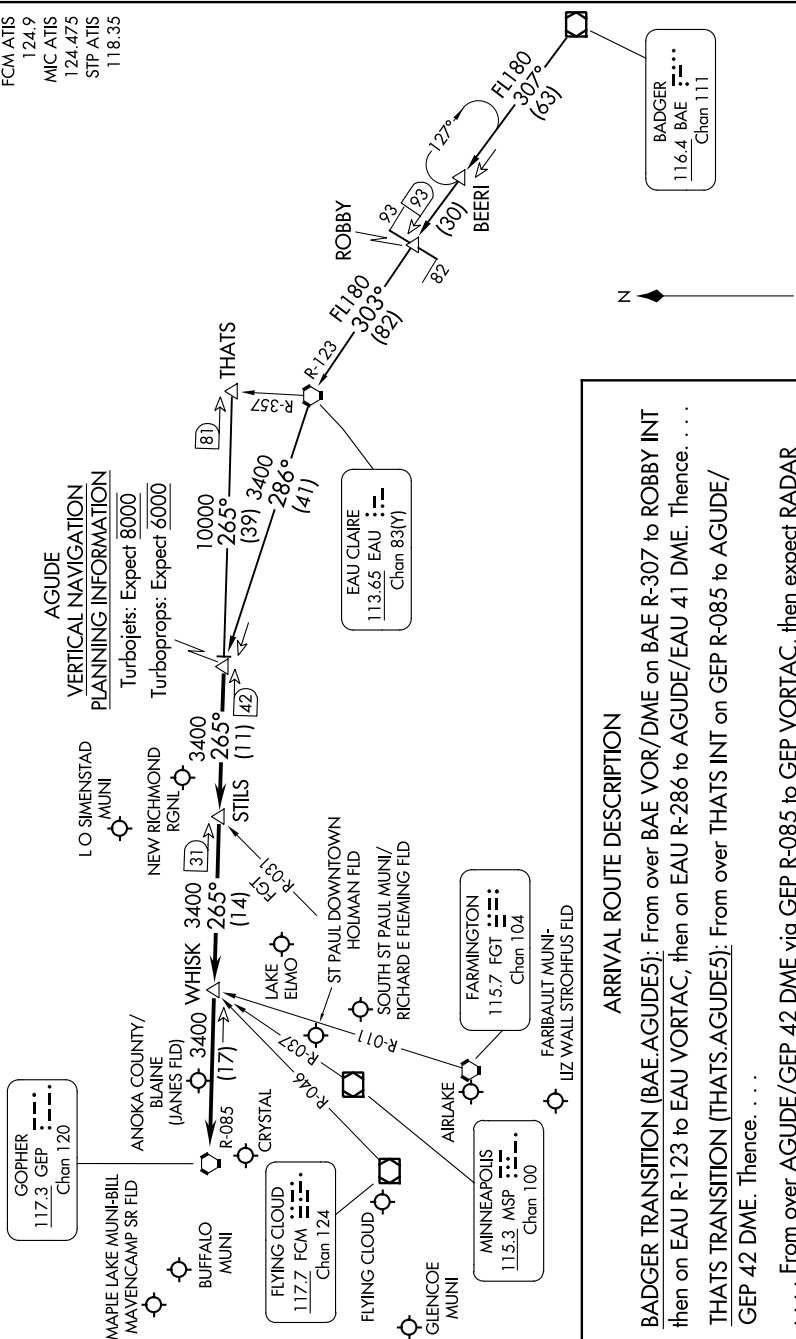
MINNEAPOLIS-ST PAUL, MINNESOTA

NC-1, 03 OCT 2024 to 31 OCT 2024

NOTE: Chart not to scale.

NOTE: DME and RADAR required.

MINNEAPOLIS APP CON  
 121.2 335.5  
 ANE ATIS  
 120.625  
 FCM ATIS  
 124.9  
 MIC ATIS  
 124.475  
 STP ATIS  
 118.35



### AGUDE

#### VERTICAL NAVIGATION PLANNING INFORMATION

Turbolojets: Expect **8000**  
 Turboprops: Expect **6000**

### ARRIVAL ROUTE DESCRIPTION

**BADGER TRANSITION (BAE.AGUDE5):** From over BAE VOR/DME on BAE R-307 to ROBBY INT then on EAU R-123 to EAU VORTAC, then on EAU R-286 to AGUDE/EAU 41 DME. Thence. . . .

**THATS TRANSITION (THATS.AGUDE5):** From over THATS INT on GEP R-085 to AGUDE/ GEP 42 DME. Thence. . . .

. . . . From over AGUDE/ GEP 42 DME via GEP R-085 to GEP VORTAC, then expect RADAR vectors to final approach course.

# AGUDE FIVE ARRIVAL