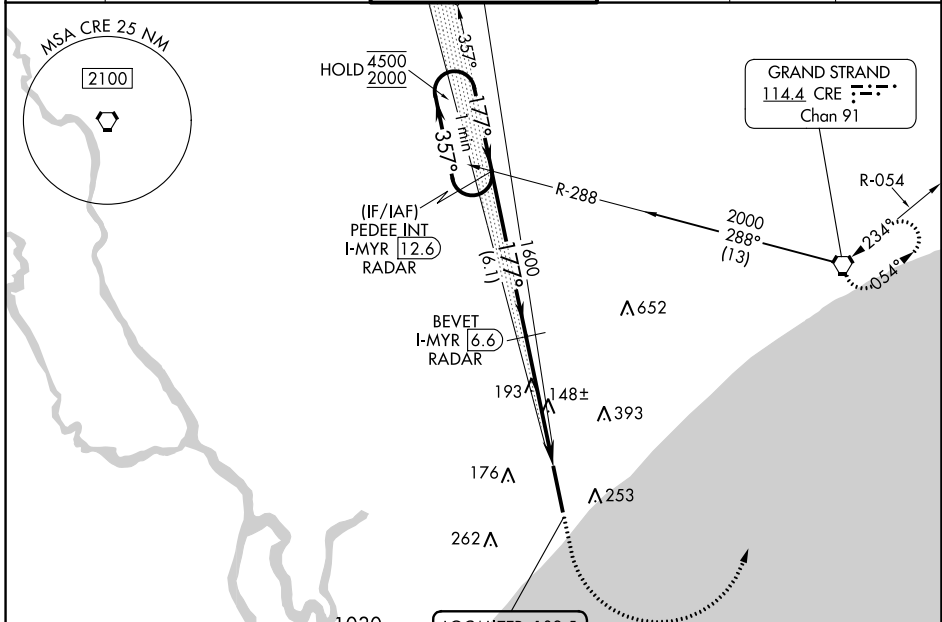


LOC/DME I-MYR <b>109.5</b> Chan <b>32</b>	APP CRS <b>177°</b>	Rwy Idg <b>9503</b> TDZE <b>23</b> Apt Elev <b>25</b>
---	------------------------	---

# ILS RWY 18 (SA CAT I & II)

MYRTLE BEACH INTL (MYR)

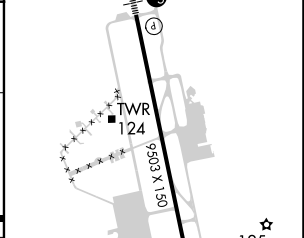
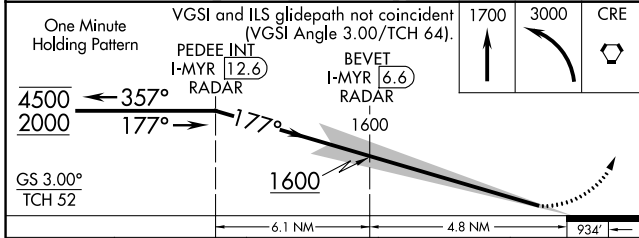
DME required.		MALSR	MISSED APPROACH: Climb to 1700 then climbing left turn to 3000 direct CRE VORTAC and hold.		
SA CAT I/II: Requires specific OPSPEC, MSPEC, or LOA approval.		AS			
ATIS <b>123.925</b>	MYRTLE BEACH APP CON * (171° - 321°) <b>127.4 257.95</b> (322° - 170°) <b>119.2 350.3</b>	MYRTLE BEACH TOWER * <b>128.45 (CTAF) 259.3</b>	GND CON <b>120.3 275.8</b>	CLNC DEL <b>120.3</b>	UNICOM <b>122.95</b>



SE-2, 03 OCT 2024 to 31 OCT 2024

SE-2, 03 OCT 2024 to 31 OCT 2024

ELEV 25	TDZE 23
---------	---------



CATEGORY	A	B	C	D
S-ILS 18		SA CAT I RA 156/14	150 DA 173	
S-ILS 18		SA CAT II RA 101/12	100 DA 123	

**SA CATEGORY I & II SPECIAL AIRCREW & AIRCRAFT CERTIFICATION REQUIRED**