


WAAS CH 56613 W01A	APP CRS 006°	Rwy Idg 5930 TDZE 17 Apt Elev 36
--	------------------------	---

RNAV (GPS) Y RWY 1L

NAPA COUNTY (APC)

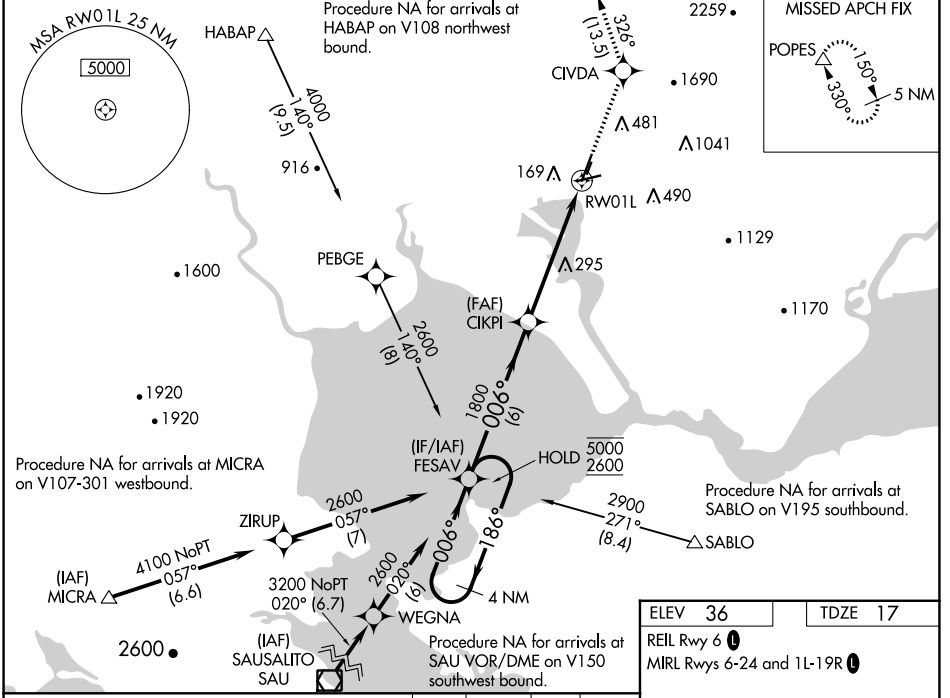
RNP APCH.

⚠ For uncompensated Baro-VNAV systems, LNAV/VNAV NA below -4°C or above 54°C. Circling Cats A/B/C NA northeast or Rwy's 19R and 24. Circling Cat D NA east of Rwy 19L-1R. Inop table does not apply to LPV, LNAV/VNAV all Cats, and LNAV Cats C/D. Circling Rwy 6 NA at night.

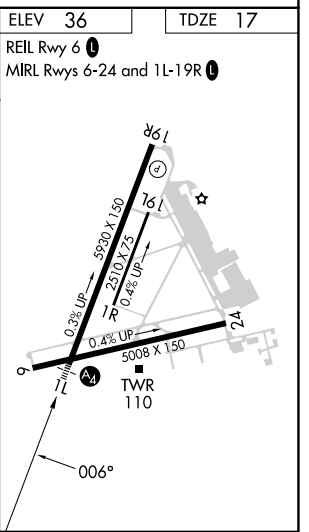
MALS 

MISSED APPROACH: Climb to 5000 direct CIVDA and on track 326° to POPES and hold, continue climb-in-hold to 5000.

ATIS 124.05	OAKLAND CENTER 127.8 353.5	NAPA TOWER ★ 118.7 (CTAF) 0 257.8	GND CON 121.7	CLNC DEL 127.85	UNICOM 122.95
-----------------------	--------------------------------------	---	-------------------------	---------------------------	-------------------------



	4 NM Holding Pattern		FESAV	5000	CIVDA	tr 326°	POPES
	5000 ← 186°		2600 → 006°	1800	*3.7 NM to RWY1L	*RNAV only	RWY1L
	GP 3.00° TCH 50		6 NM	1.8 NM	3.7 NM		
CATEGORY	A	B	C	D			
LPV DA	1252-5		1235 (1300-5)				
LNAV/VNAV DA	1051-4		1034 (1100-4)				
LNAV MDA	1260-1 1243 (1300-1)	1260-1¼ 1243 (1300-1¼)	1260-3 1243 (1300-3)				
CIRCLING	1260-1¼ 1224 (1300-1¼)	1260-1½ 1224 (1300-1½)	1280-3 1244 (1300-3)	1300-3 1264 (1300-3)			



SW-2, 03 OCT 2024 to 31 OCT 2024

SW-2, 03 OCT 2024 to 31 OCT 2024