

| | | | | |
|---------|-----|---------|----------|------|
| VORTAC | SGD | APP CRS | Rwy Idg | 5008 |
| 112.1 | | 050° | TDZE | 21 |
| Chan 58 | | | Apt Elev | 36 |

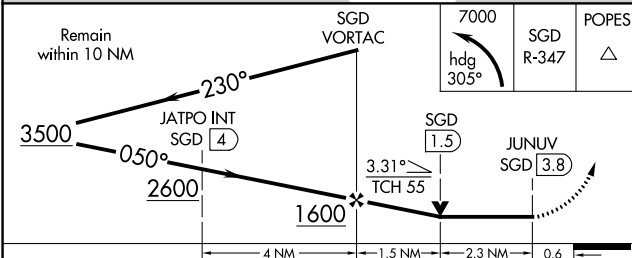
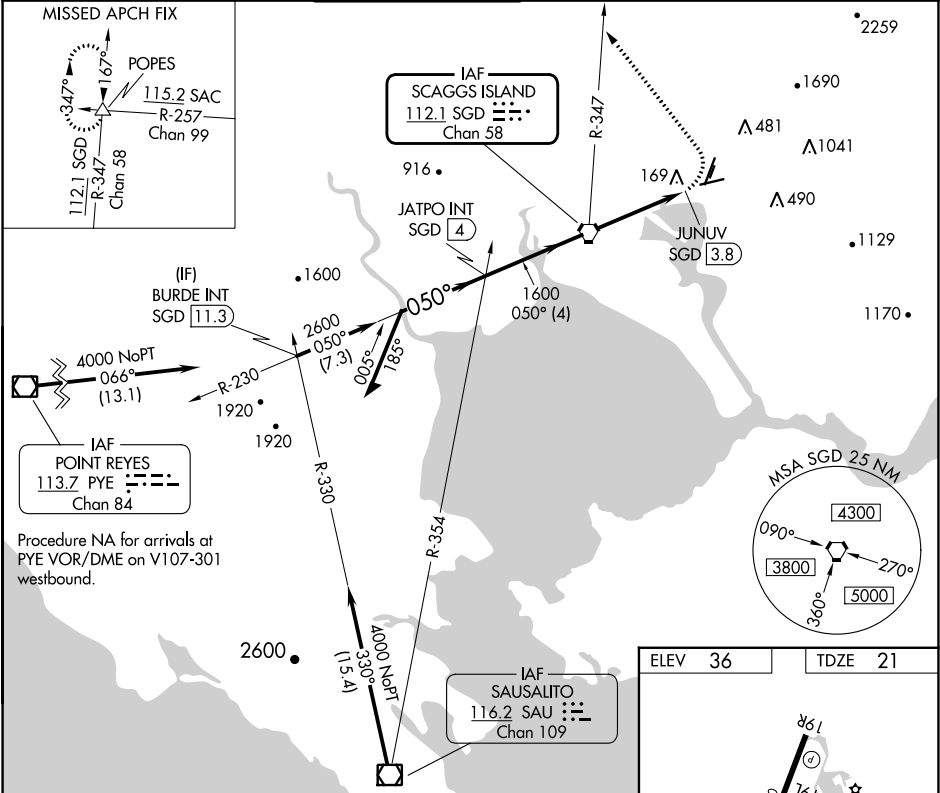
VOR RWY 6

NAPA COUNTY (APC)

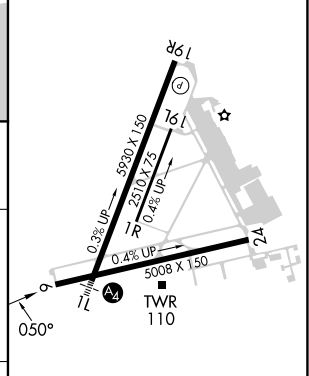
⚠ Rwy 6 helicopter visibility reduction below ¼ SM NA.
 Circling Cats A/B/C NA east of Rwy 19R and northwest of Rwy 24. Circling Cat D NA east of Rwy 19L-1R.

MISSED APPROACH: Climbing left turn to 7000 on heading 305° and SGD VORTAC R-347 to POPES INT and hold, continue climb-in-hold to 7000.

| | | | | | |
|--------|----------------|--------------------|---------|----------|--------|
| ATIS | OAKLAND CENTER | NAPA TOWER ★ | GND CON | CLNC DEL | UNICOM |
| 124.05 | 127.8 353.5 | 118.7 (CTAF) 257.8 | 121.7 | 127.85 | 122.95 |



| | | | |
|------|----|------|----|
| ELEV | 36 | TDZE | 21 |
|------|----|------|----|



| CATEGORY | A | B | C | D |
|-------------------|---------------------------|---------------------------|-------------------------|-------------------------|
| S-6 | 1080-1¼ 1059 (1100-1¼) | 1080-1½ 1059 (1100-1½) | 1080-3 | 1059 (1100-3) |
| C CIRCLING | 1080-1¼ 1044 (1100-1¼) | 1080-1½ 1044 (1100-1½) | 1280-3 1244 (1300-3) | 1300-3 1264 (1300-3) |

REIL Rwy 6

MIRL Rws 6-24 and 1L-19R

FAF to MAP 3.8 NM

| | | | | | |
|---------|------|------|------|------|------|
| Knots | 60 | 90 | 120 | 150 | 180 |
| Min:Sec | 3:48 | 2:32 | 1:54 | 1:31 | 1:16 |

SW-2, 03 OCT 2024 to 31 OCT 2024

SW-2, 03 OCT 2024 to 31 OCT 2024