

LOC/DME I-EWR	APP CRS	Rwy ldg	8460
110.75	039°	TDZE	10
Chan 44 (Y)		Apt Elev	17

# COPTER ILS Y or LOC Y RWY 4L

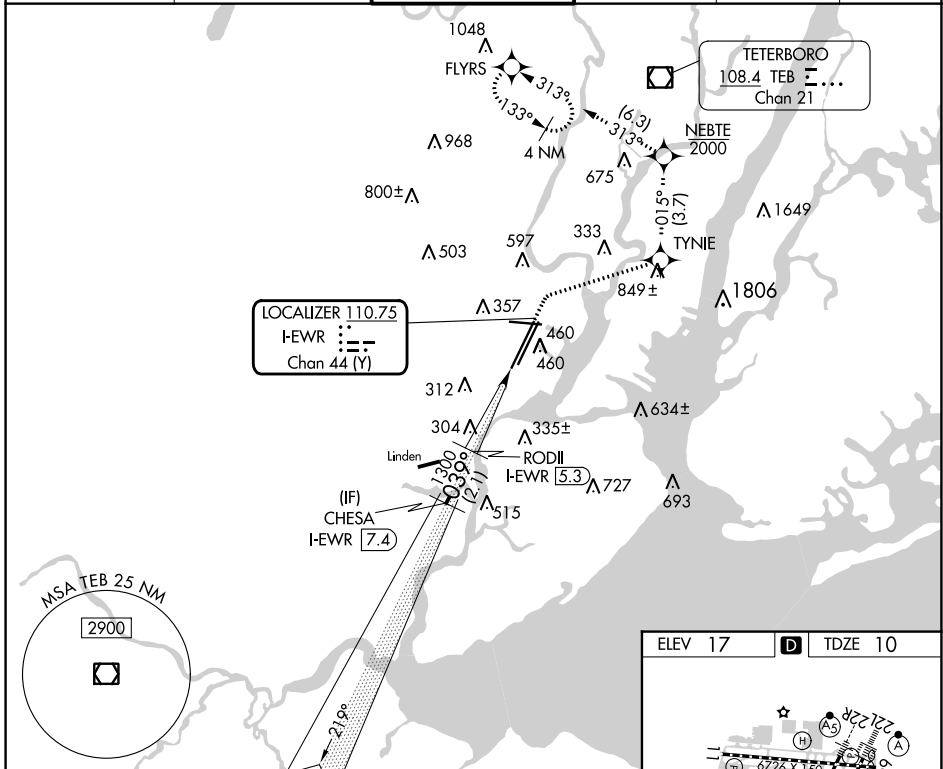
NEWARK LIBERTY INTL (EWR)

RNP APCH - GPS.
DME and RADAR required.
▼
▲ NA



MISSED APPROACH: Climb to 520, then climbing right turn to 2000 direct TYNIE, then on track 015° to NEBTE, cross NEBTE at or below 2000, then climbing left turn to 3000 on track 313° to FLYRS and hold.

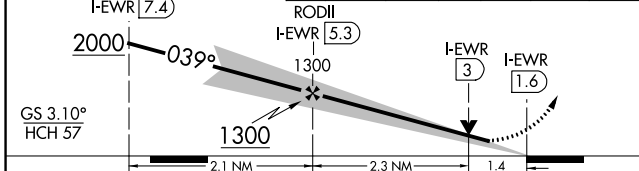
D-ATIS	NEWARK APP CON	NEWARK TOWER	GND CON	CLNC DEL	CPDLC
115.7 134.825	128.55 379.9	118.3 257.6	121.8	118.85	



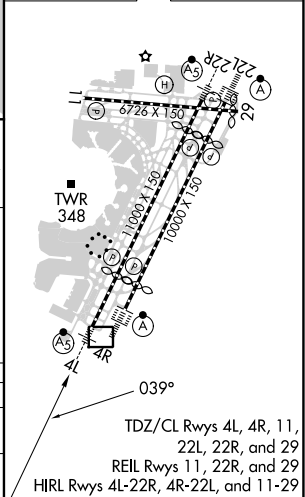
NE-2, 03 OCT 2024 to 31 OCT 2024

NE-2, 03 OCT 2024 to 31 OCT 2024

VGSI and ILS glidepath not coincident (VGSI Angle 3.10/TCH 77).	520	2000	TYNIE	tr 015°	NEBTE	3000	FLYRS
	↑	↘	✧	↘	✧	↘	✧
					2000		



ELEV 17	D	TDZE 10
---------	---	---------



CATEGORY	COPTER	
H-ILS 4L	210/12	200 (200-¼)
H-LOC 4L	560/12	550 (600-¼)

# COPTER ILS Y or LOC Y RWY 4L

TDZ/CL Rwy 4L, 4R, 11, 22L, 22R, and 29  
REIL Rwy 11, 22R, and 29  
HIRL Rwy 4L-22R, 4R-22L, and 11-29