

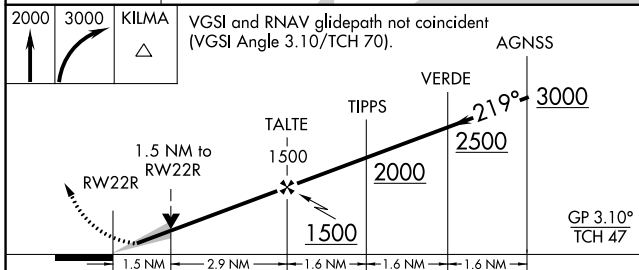
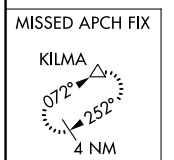
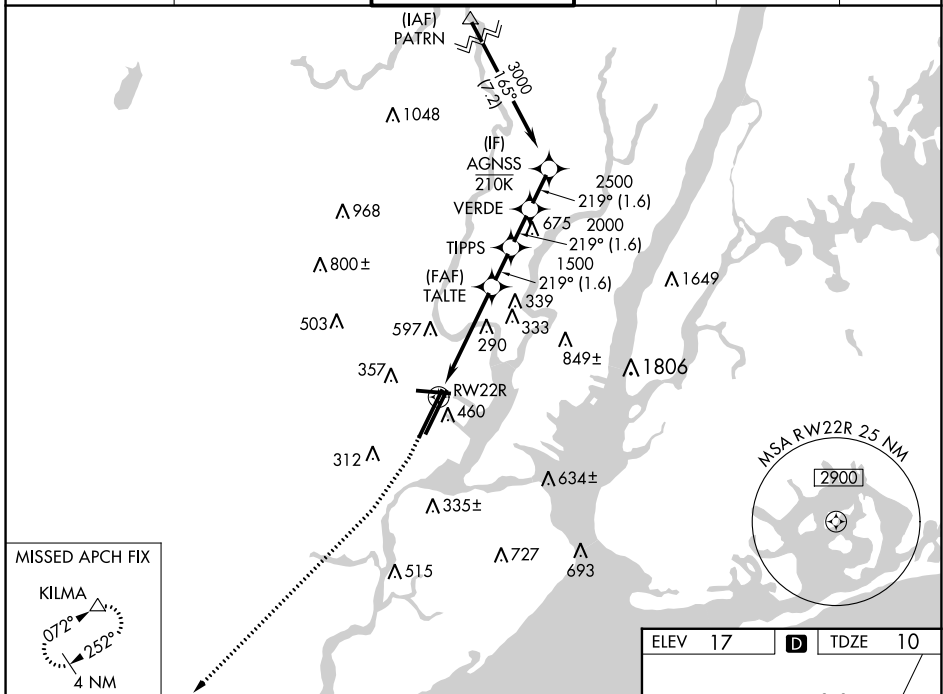
WAAS CH 61244 W22B	APP CRS 219°	Rwy Idg 9560 TDZE 10 Apt Elev 17
--	------------------------	---

RNAV (GPS) RWY 22R

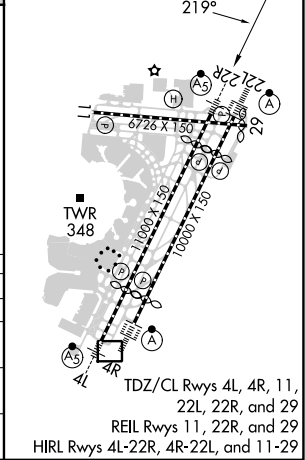
NEWARK LIBERTY INTL (EWR)

RNP APCH - GPS.	MALSR	MISSED APPROACH: Climb to 2000, then climbing right turn to 3000 direct KILMA and hold.
<p>▼ Circling NA south of Rwy 11-29. When Circling to Rwy 29 at night, operational VGSI required, remain on or above VGSI glidepath until threshold. For uncompensated Baro-VNAV systems, LNAV/VNAV NA below -12°C or above 54°C.</p>		

D-ATIS 115.7 134.825	NEWARK APP CON 128.55 379.9	NEWARK TOWER 118.3 257.6	GND CON 121.8	CLNC DEL 118.85	CPDLC
--------------------------------	---------------------------------------	------------------------------------	-------------------------	---------------------------	-------



ELEV 17	D	TDZE 10
---------	----------	---------



CATEGORY	A	B	C	D
LPV DA		210/18	200 (200-½)	
LNAV/VNAV DA		468/45	458 (500-¾)	
LNAV MDA	560/24	550 (600-½)	560/60	550 (600-1¼)
C CIRCLING	660-1	643 (700-1)	900-2¾ 883 (900-2¾)	900-3 883 (900-3)

NE-2, 03 OCT 2024 to 31 OCT 2024

NE-2, 03 OCT 2024 to 31 OCT 2024