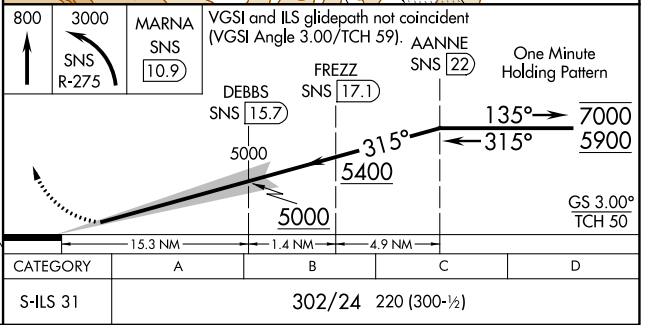
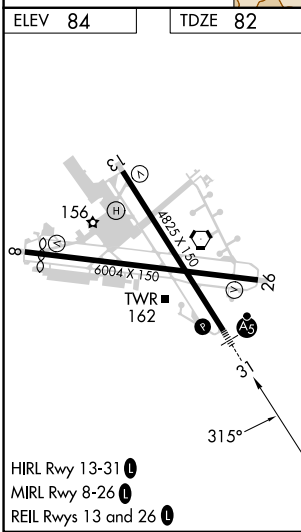
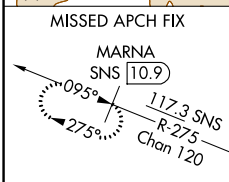
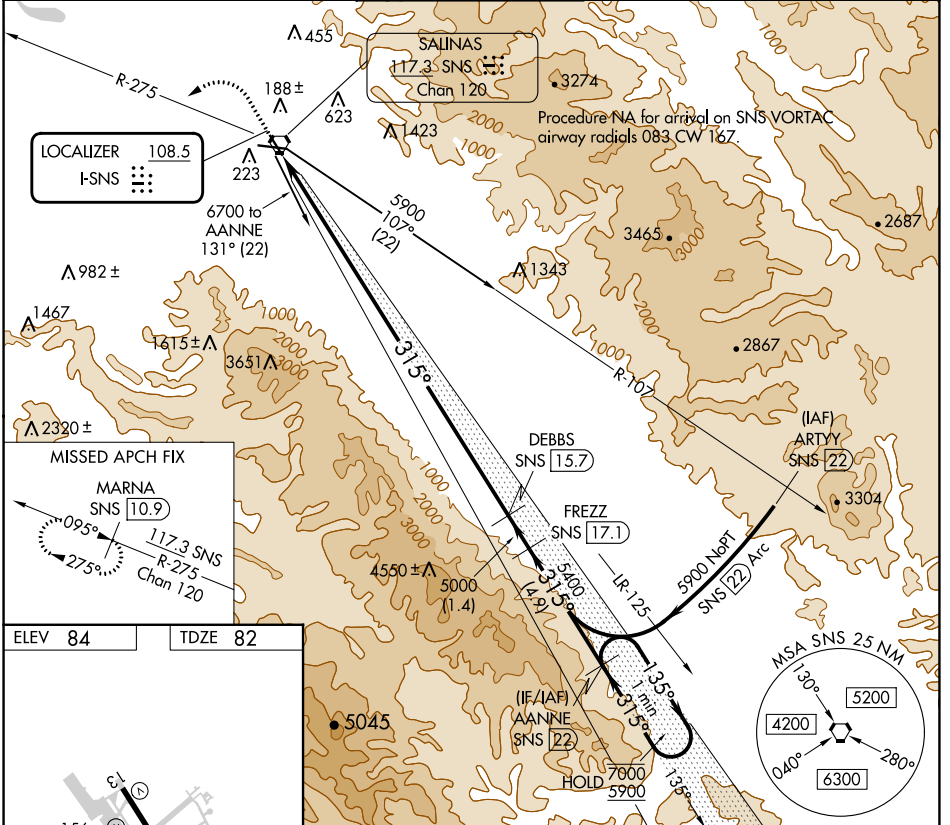


LOC I-SNS 108.5	APP CRS 315°	Rwy Idg TDZE Apt Elev	4825 82 84
---------------------------	------------------------	-----------------------------	---------------------------------------

ILS RWY 31

SALINAS MUNI (SNS)

DME required.		MALSR	MISSED APPROACH: Climb to 800, then climbing left turn to 3000 on SNS VORTAC R-275 to MARNA/SNS 10.9 DME and hold, continue climb-in-hold to 3000.	
DME from SNS VORTAC. DME use requires simultaneous reception of I-SNS and SNS DME.				
ATIS 124.85	NORCAL APP CON 133.0 251.15	SALINAS TOWER* 119.525 (CTAF) 239.3	GND CON 121.7	UNICOM 123.0



SW-2, 03 OCT 2024 to 31 OCT 2024

SW-2, 03 OCT 2024 to 31 OCT 2024