

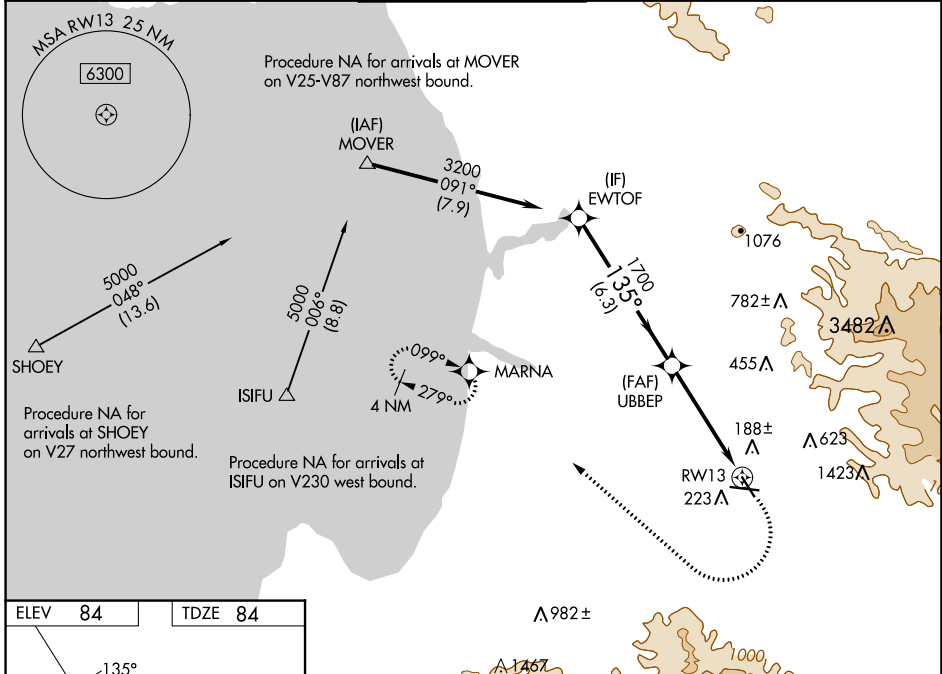
WAAS CH <b>57944</b> <b>W13A</b>	APP CRS <b>135°</b>	Rwy Idg <b>4825</b> TDZE <b>84</b> Apt Elev <b>84</b>
--	------------------------	---

# RNAV (GPS) RWY 13

SALINAS MUNI (SNS)

RNP APCH - GPS.	MISSED APPROACH: (Do not exceed 185K until MARNNA). Climb to 600, then climbing right turn to 3000 direct MARNNA and hold, continue climb-in-hold to 3000.
<p><b>⚠</b> Rwy 13 helicopter visibility reduction below <math>\frac{3}{4}</math> SM NA. For uncompensated Baro-VNAV systems, LNAV/VNAV NA below 1°C or above 54°C. Circling NA for Cat C northeast of Rwy 13 and north of Rwy 26. Circling NA for Cat D northeast of Rwy 13-31.</p>	

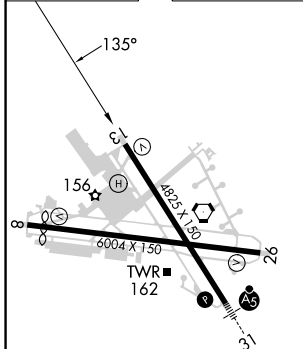
ATIS <b>124.85</b>	NORCAL APP CON <b>133.0 251.15</b>	SALINAS TOWER * <b>119.525 (CTAF) 0 239.3</b>	GND CON <b>121.7</b>	UNICOM <b>123.0</b>
-----------------------	---------------------------------------	--	-------------------------	------------------------



SW-2, 03 OCT 2024 to 31 OCT 2024

SW-2, 03 OCT 2024 to 31 OCT 2024

ELEV 84	TDZE 84
---------	---------



- HIRL Rwy 13-31
- MIRL Rwy 8-26
- REIL Rwy 13 and 26

EWTOT 3200 GP 3.12° TCH 50	UBBEP 1700	1700	600	3000	MARNNA
			1.4 NM to RWY 13		
6.3 NM		3.3 NM	1.4 NM		
CATEGORY	A	B	C	D	
LPV DA	334- $\frac{3}{4}$ 250 (300- $\frac{3}{4}$ )				
LNAV/VNAV DA	447-1	363 (400-1)	463-1 379 (400-1)	488- $\frac{1}{8}$	404 (500- $\frac{1}{8}$ )
LNAV MDA	580-1	496 (500-1)	580- $1\frac{3}{8}$	496 (500- $1\frac{3}{8}$ )	
<b>C</b> CIRCLING	580-1	496 (500-1)	800-2 716 (800-2)	1620-3 1536 (1600-3)	