

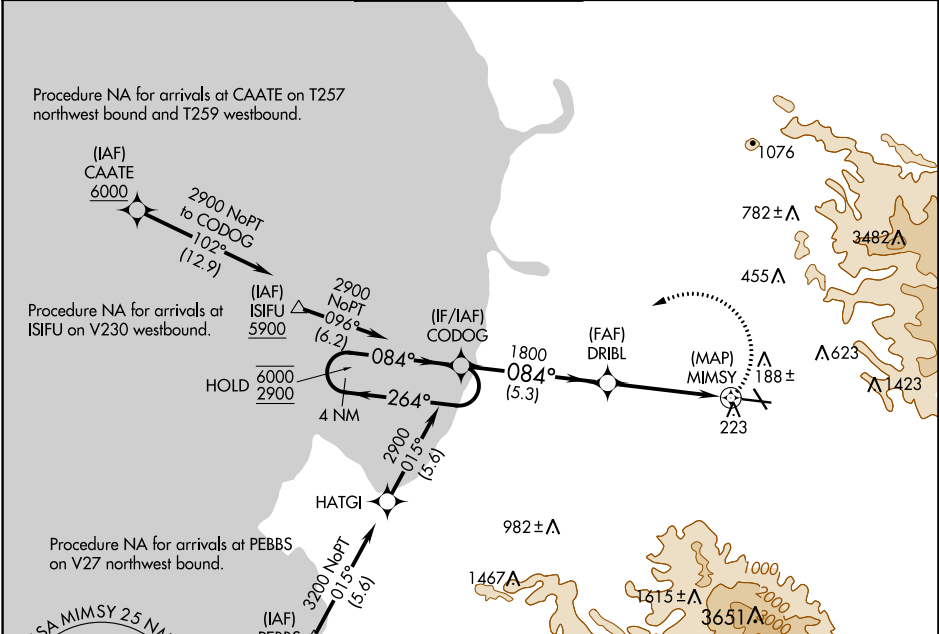
APP CRS	Rwy Idg	<b>5608</b>
<b>084°</b>	TDZE	<b>76</b>
	Apt Elev	<b>84</b>

# RNAV (GPS) RWY 8

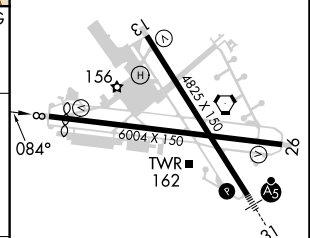
SALINAS MUNI (SNS)

RNP APCH-GPS.	MISSED APPROACH: (Do not exceed 185K until CODOG) Climbing left turn to 2900 direct CODOG and hold, continue climb-in-hold to 2900.
Circling Cat C/D NA northeast of Rwy 13 and north of Rwy 26.	

ATIS <b>124.85</b>	NORCAL APP CON <b>133.0 251.15</b>	SALINAS TOWER * <b>119.525 (CTAF) 239.3</b>	GND CON <b>121.7</b>	UNICOM <b>123.0</b>
-----------------------	---------------------------------------	--	-------------------------	------------------------



ELEV 84	TDZE 76
---------	---------



CATEGORY	A	B	C	D
LNAV MDA	760-1	684 (700-1)	760-2	684 (700-2)
CIRCLING	760-1	676 (700-1)	800-2 716 (800-2)	1680-3 1596 (1600-3)

HIRL Rwy 13-31

MIRL Rwy 8-26

REIL Rwy 13 and 26

SW-2, 03 OCT 2024 to 31 OCT 2024

SW-2, 03 OCT 2024 to 31 OCT 2024