

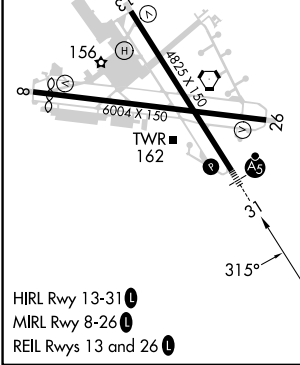
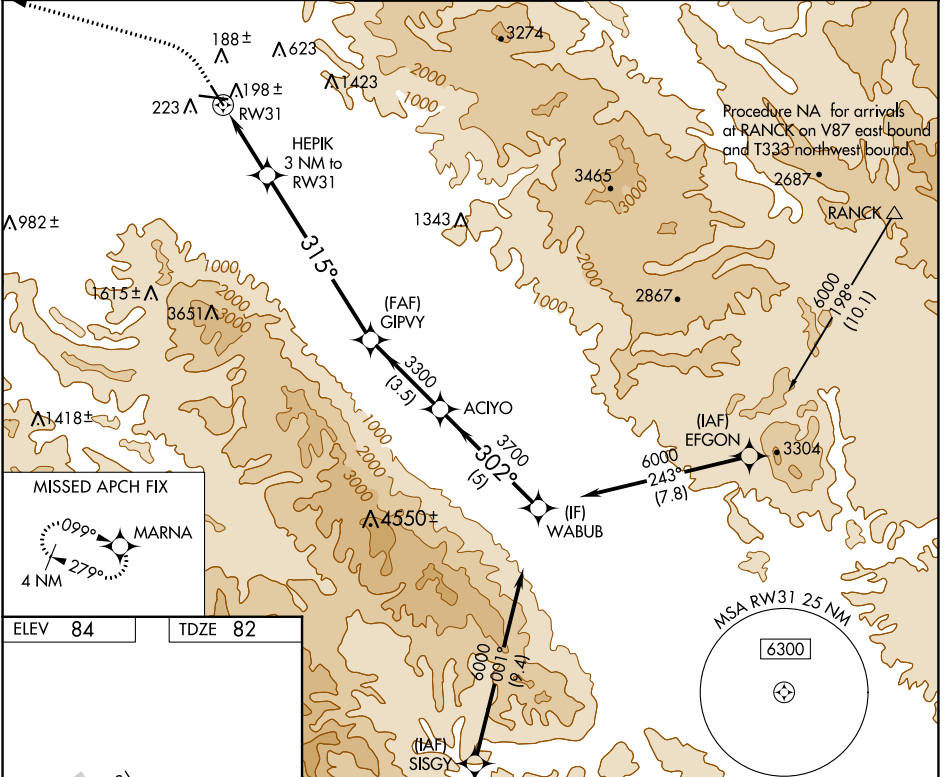
APP CRS	Rwy Idg	<b>4825</b>
<b>315°</b>	TDZE	<b>82</b>
	Apt Elev	<b>84</b>

# RNAV (GPS) Y RWY 31

SALINAS MUNI (SNS)

RNP APCH - GPS.		MALS R	MISSED APPROACH: Climb to 600, then climbing left turn to 3000 direct MARNA and hold, continue climb-in-hold to 3000.	
<p>⚠ Circling NA for Cat C northeast of Rwy 13 and north of Rwy 26. Circling NA for Cat D northeast of Rwy 13-31.</p>				

ATIS <b>124.85</b>	NORCAL APP CON <b>133.0 251.15</b>	SALINAS TOWER * <b>119.525 (CTAF) 0 239.3</b>	GND CON <b>121.7</b>	UNICOM <b>123.0</b>
-----------------------	---------------------------------------	--------------------------------------------------	-------------------------	------------------------



ELEV 84	TDZE 82				
600	3000	MARNA	VGS1 and descent angles not coincident (VGS1 Angle 3.00/TCH 59).		WABUB
↑	↻	⬠	HEPIK 3 NM to RW31		6000
			1 NM to RW31	≤ 3.00° TCH 50	
			315°	302°	
			1080	3300	3700
			1 NM	2 NM	7 NM
			3.5 NM	5 NM	
CATEGORY	A	B	C	D	
LNAV MDA	460/24	378 (400-½)	460/35	378 (400-¾)	
<input checked="" type="checkbox"/> CIRCLING	540-1	456 (500-1)	800-2 716 (800-2)	1620-3 1536 (1600-3)	

SW-2, 03 OCT 2024 to 31 OCT 2024

SW-2, 03 OCT 2024 to 31 OCT 2024