

VORTAC SNS 117.3 Chan 120	APP CRS 122°	Rwy Idg TDZE Apt Elev	4825 84 84
---	------------------------	-----------------------------	---------------------------------------

VOR RWY 13

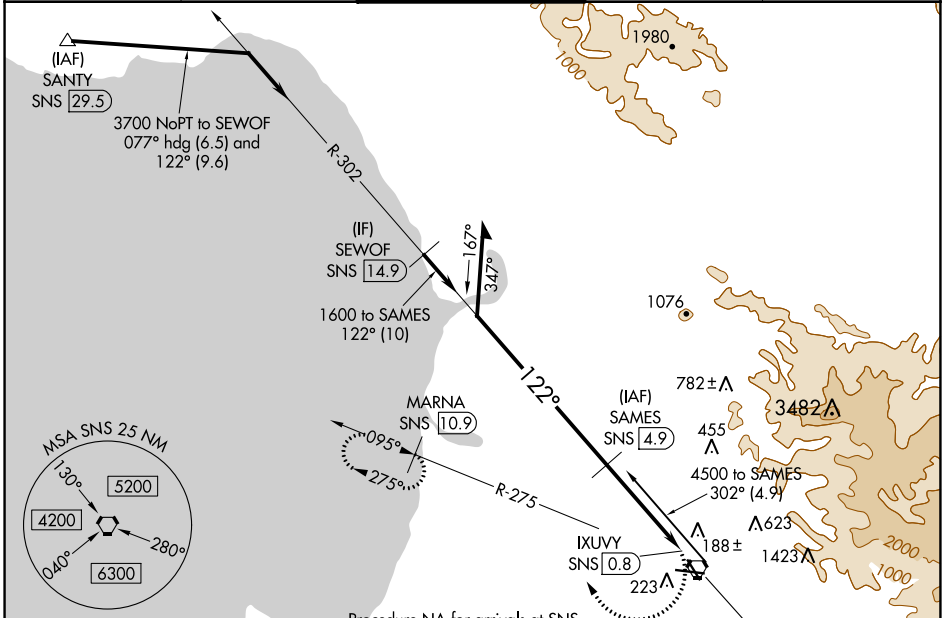
SALINAS MUNI (SNS)

DME required.

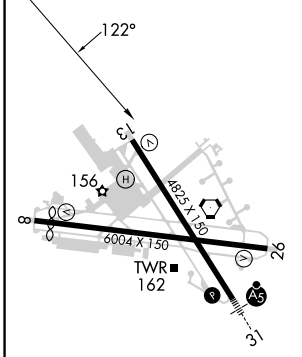
▼ Rwy 13 helicopter visibility reduction below 1 SM NA. Circling NA for Cat C northeast of Rwy 13 and north of Rwy 26 and NA for Cat D northeast of Rwy 13-31.

▲ MISSED APPROACH: Climbing right turn to 3000 on SNS VORTAC R-275 to MARNA/SNS 10.9 DME and hold, continue climb-in-hold to 3000.

ATIS 124.85	NORCAL APP CON 133.0 251.15	SALINAS TOWER* 119.525 (CTAF) 239.3	GND CON 121.7	UNICOM 123.0
-----------------------	---------------------------------------	---	-------------------------	------------------------

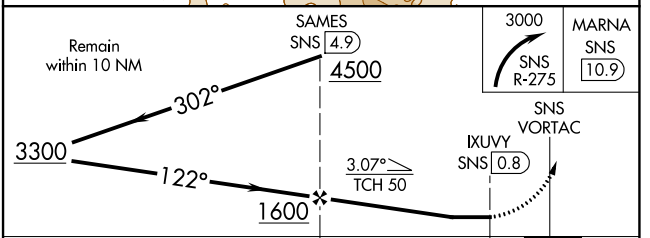


ELEV 84	TDZE 84
----------------	----------------



Procedure NA for arrivals at SNS VORTAC on V25-87 southeast bound and V230 east bound

SALINAS
117.3 SNS
Chan 120



CATEGORY	A	B	C	D
S-13	600-1	516 (600-1)	600-1 ³ / ₈ 516 (600-1 ³ / ₈)	760-1 ⁷ / ₈ 676 (700-1 ⁷ / ₈)
CIRCLING	600-1	516 (600-1)	800-2 716 (800-2)	960-2 ³ / ₄ 876 (900-2 ³ / ₄)

HIRL Rwy 13-31
MIRL Rwy 8-26
REIL Rws 13 and 26

SW-2, 03 OCT 2024 to 31 OCT 2024

SW-2, 03 OCT 2024 to 31 OCT 2024