

VOR GLJ 113.05	APP CRS 117°	Rwy Idg TDZE Apt Elev	8004 230 261
--------------------------	------------------------	-----------------------------	---

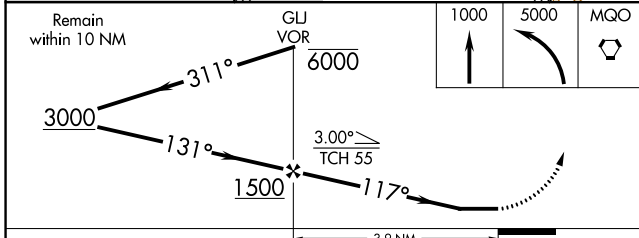
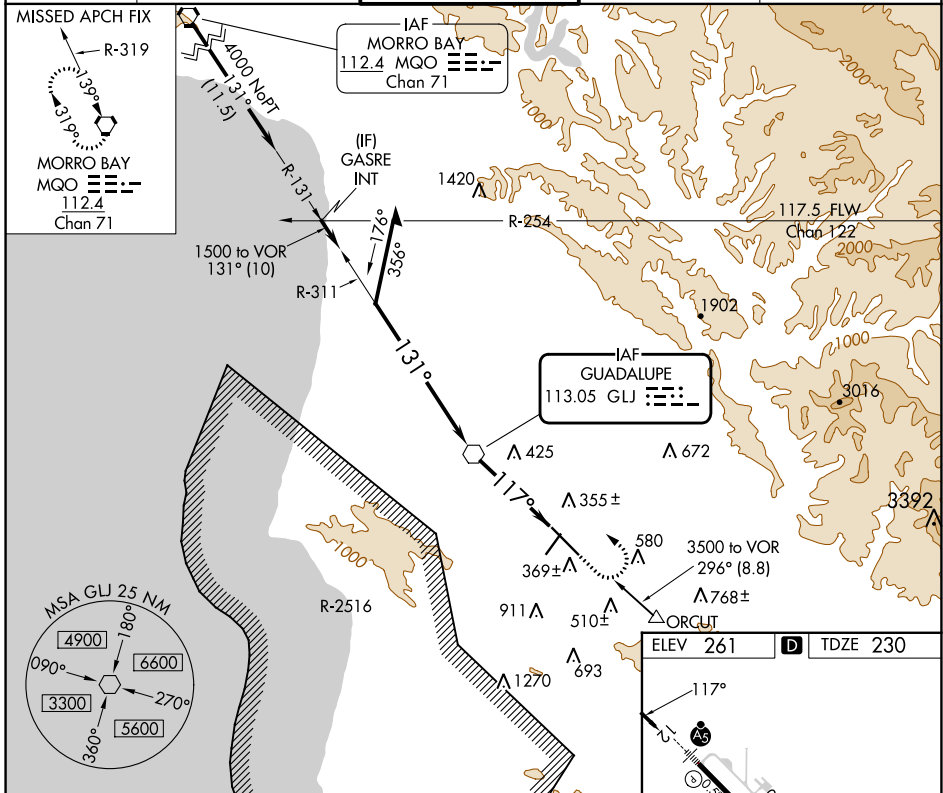
VOR RWY 12

SANTA MARIA PUB/CAPT G ALLAN HANCOCK FLD (SMX)

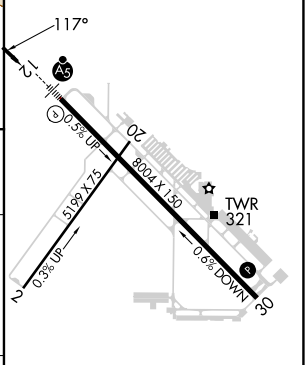
⚠ When local altimeter setting not received, use San Luis Obispo altimeter setting and increase all MDA 60 feet and S-12 visibility Cat C/D to 1½ SM. For inop ALS, increase S-12 Cat C/D visibility to 1% SM. For inop ALS when using San Luis Obispo altimeter setting, increase S-12 Cat C/D visibility to 1% SM. Night Landing Rwy 2 NA.

MALSRL
MISSED APPROACH: Climb to 1000 then climbing left turn to 5000 direct MQO VORTAC and hold.

ATIS 121.15	SANTA BARBARA APP CON* 124.15 327.8	SANTA MARIA TOWER* 118.3 (CTAF) 239.25	GND CON 121.9	UNICOM 122.95
-----------------------	---	--	-------------------------	-------------------------



ELEV 261	D TDZE 230
----------	-------------------



CATEGORY	A	B	C	D
S-12	740/24	510 (500-½)	740/55	510 (500-1)
CIRCLING	860-1 599 (600-1)	1000-1 739 (800-1)	1420-3 1159 (1200-3)	1540-3 1279 (1300-3)

FAF to MAP 3.9 NM					
Knots	60	90	120	150	180
Min:Sec	3:54	2:36	1:57	1:34	1:18

VOR RWY 12

SW-3, 03 OCT 2024 to 31 OCT 2024

SW-3, 03 OCT 2024 to 31 OCT 2024