

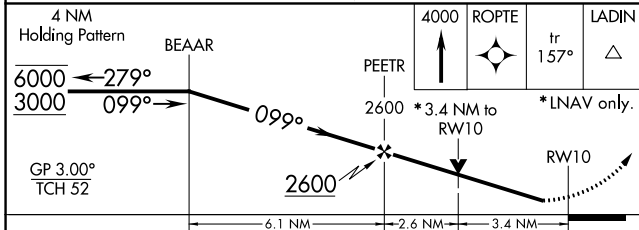
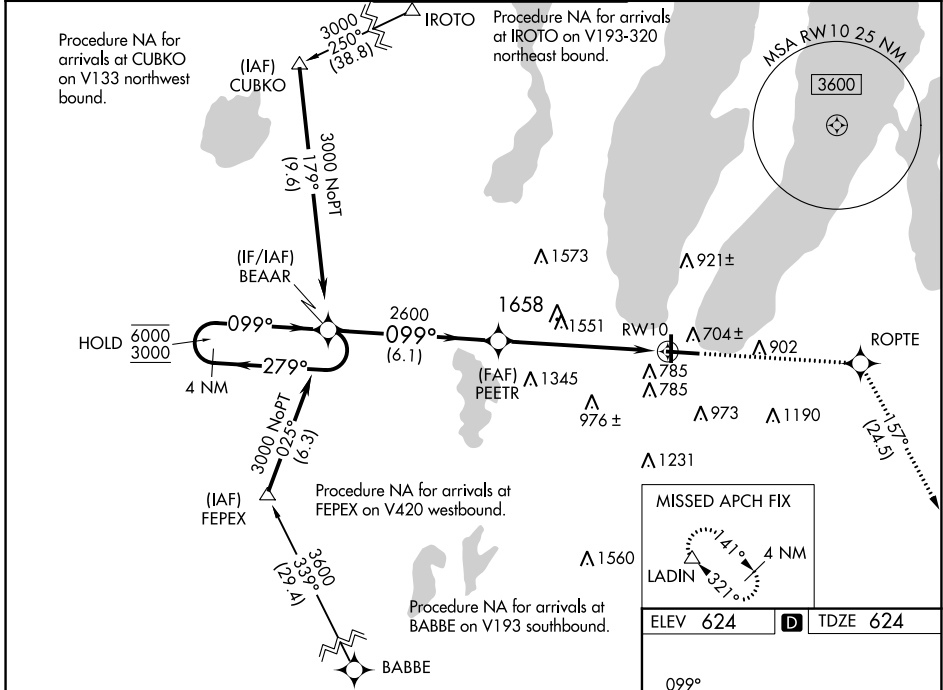
WAAS CH 42610 W10A	APP CRS 099°	Rwy Idg 7016 TDZE 624 Apt Elev 624
--	------------------------	---

RNAV (GPS) RWY 10

CHERRY CAPITAL (TVC)

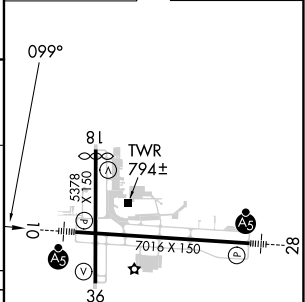
RNP APCH.	MALSRL AS	MISSED APPROCH: Climb to 4000 direct ROPTe and on track 157° to LADIN and hold.
<p>⚠ For uncompensated Baro-VNAV systems, LNAV/VNAV NA below -19°C (-2°F) or above 54°C (130°F). Rwy 10 helicopter visibility reduction below 3/4 SM NA. For inop ALS, increase LPV visibility all Cats 1/2 SM. Inop table does not apply to LNAV/VNAV all Cats and LNAV Cats C/D.</p>		

ATIS 119.175	MINNEAPOLIS CENTER 132.9 338.3	TRAVERSE CITY TOWER* 124.2 (CTAF) 0 348.6	GND CON 121.8 348.6	UNICOM 122.95
------------------------	--	---	-------------------------------	-------------------------



MISSED APCH FIX

ELEV 624 **D** TDZE 624



CATEGORY	A	B	C	D
LPV DA		909-3/4	285 (300-3/4)	
LNAV/VNAV DA		1983-5	1359 (1400-5)	
LNAV MDA	1780-3/4 1156 (1200-3/4)	1780-1 1156 (1200-1)	1780-3	1156 (1200-3)
C CIRCLING	1780-1 1/4 1156 (1200-1 1/4)	1780-1 1/2 1156 (1200-1 1/2)	1780-3	1156 (1200-3)

HIRL Rwy 10-28
MIRL Rwy 18-36
REIL Rwy 36

EC-1, 03 OCT 2024 to 31 OCT 2024

EC-1, 03 OCT 2024 to 31 OCT 2024