

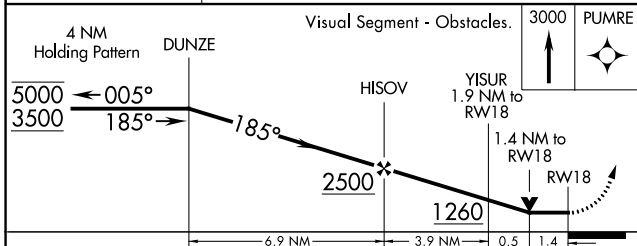
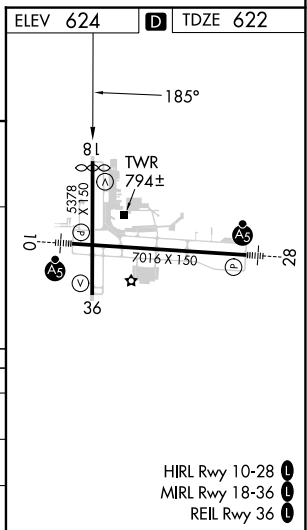
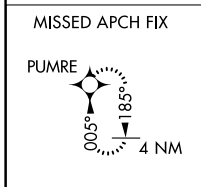
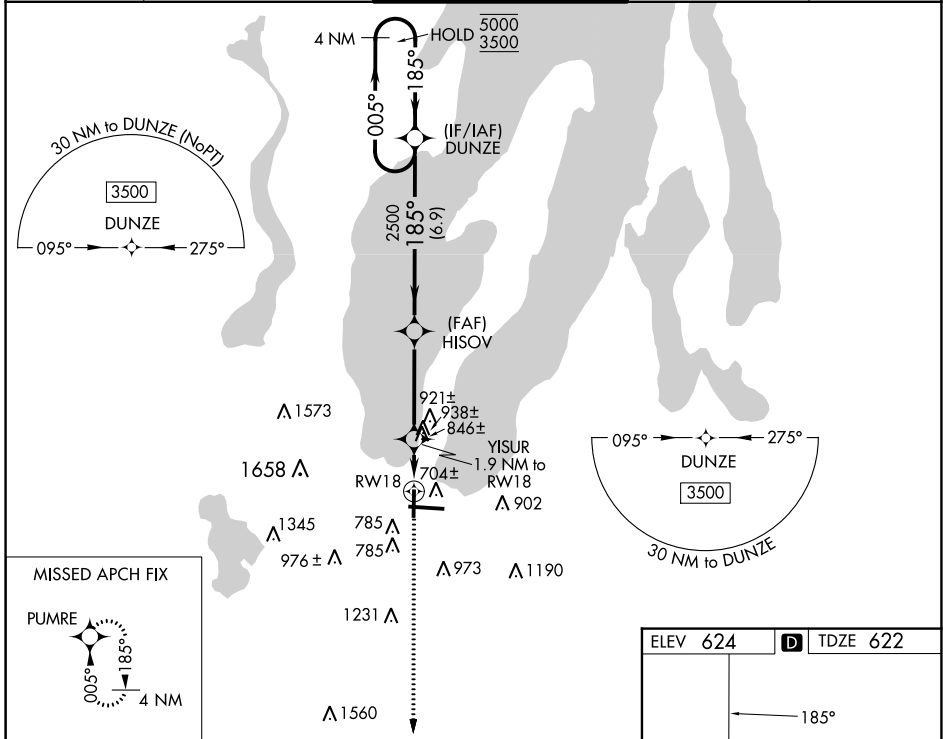
WAAS CH 90335 W18A	APP CRS 185°	Rwy Idg TDZE 622 Apt Elev 624	4838 622 624
--	------------------------	---	---

RNAV (GPS) RWY 18

CHERRY CAPITAL (TVC)

RNP APCH - GPS.		MISSED APPROACH: Climb to 3000 direct PUMRE and hold.	
▼ ▲ Rwy 18 helicopter visibility reduction below ¾ SM NA.			

ATIS 119.175	MINNEAPOLIS CENTER 132.9 338.3	TRAVERSE CITY TOWER* 124.2 (CTAF) 348.6	GND CON 121.8 348.6	UNICOM 122.95
------------------------	--	---	-------------------------------	-------------------------



CATEGORY	A	B	C	D
LP MDA	1100-1	478 (500-1)	1100-1 3/8	478 (500-1 3/8)
LNAV MDA	1200-1	578 (600-1)	1200-1 5/8	578 (600-1 5/8)
CIRCLING	1200-1 576 (600-1)	1260-1 636 (700-1)	1500-2 1/2 876 (900-2 1/2)	1720-3 1096 (1100-3)

EC-1, 03 OCT 2024 to 31 OCT 2024

EC-1, 03 OCT 2024 to 31 OCT 2024