

| | | | |
|-------------------------|------------------------|-----------------------------|---|
| WAAS CH 97535 | APP CRS 279° | Rwy Idg TDZE Apt Elev | 7016 616 624 |
|-------------------------|------------------------|-----------------------------|---|

RNAV (GPS) RWY 28

CHERRY CAPITAL (TVC)

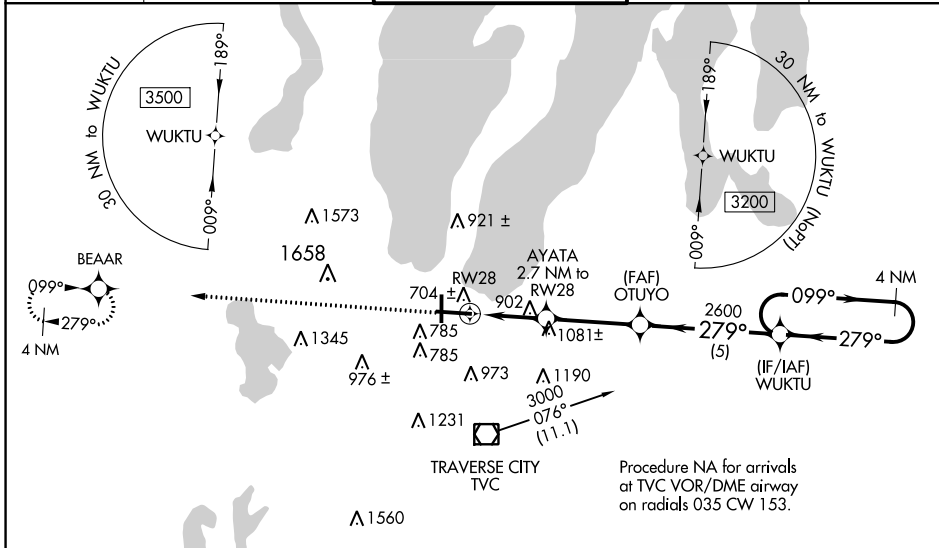
RNP APCH - GPS.

▼ For uncompensated Baro-VNAV systems, LNAV/VNAV NA below -19°C or above 54°C. Baro-VNAV and VDP NA with Bellaire altimeter setting. When local altimeter setting not received, Bellaire altimeter setting: increase DA 51 feet and all MDA 60 feet. Increase LPV all Cats visibility 1/8 mile, LNAV/VNAV visibility all Cats 1/4 mile and LNAV Cat B visibility 1/4 mile and C/D visibilities 1/8 mile and Circling Cat B/C visibility 1/4 mile. For inop MALS, increase all LPV all Cats visibility to 1/4, LNAV Cats C/D visibility to 2 miles. For inop MALS when using Bellaire altimeter setting, increase LPV all Cats visibility to 1 1/2 mile, LNAV Cats C/D visibility to 2 1/2 miles. #Missed approach requires minimum climb of 237 feet per NM to 2000.

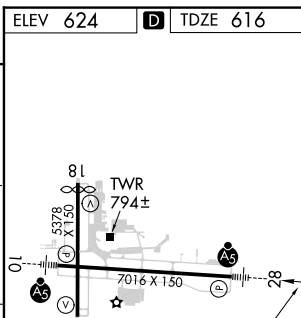
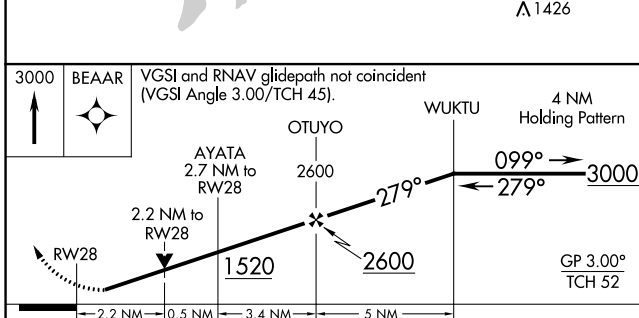


MISSED APPROACH:
Climb to 3000 direct BEARR and hold.

| | | | | |
|------------------------|--|--|-------------------------------|-------------------------|
| ATIS 119.175 | MINNEAPOLIS CENTER 132.9 338.3 | TRAVERSE CITY TOWER * 124.2 (CTAF) 348.6 | GND CON 121.8 348.6 | UNICOM 122.95 |
|------------------------|--|--|-------------------------------|-------------------------|



Procedure NA for arrivals at TVC VOR/DME airway on radials 035 CW 153.



| CATEGORY | A | B | C | D |
|--------------|----------|---------------|-----------------|----------------|
| LPV DA | | # 816-1/2 | 200 (200-1/2) | |
| LPV DA | | 963-7/8 | 347 (400-7/8) | |
| LNAV/VNAV DA | | 1330-2 | 714 (800-2) | |
| LNAV MDA | 1340-1/2 | 724 (800-1/2) | 1340-15/8 | 724 (800-15/8) |
| CIRCLING | 1340-1 | 716 (800-1) | 1500-2 1/2 | 1720-3 |
| | | | 876 (900-2 1/2) | 1096 (1100-3) |

| | |
|----------|------------|
| ELEV 624 | D TDZE 616 |
|----------|------------|

- HIRL Rwy 10-28
- MIRL Rwy 18-36
- REIL Rwy 36

EC-1, 03 OCT 2024 to 31 OCT 2024

EC-1, 03 OCT 2024 to 31 OCT 2024