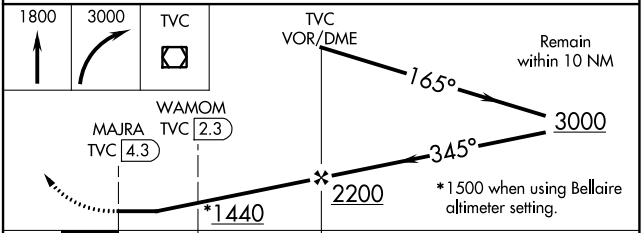
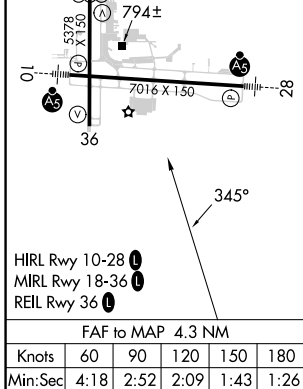
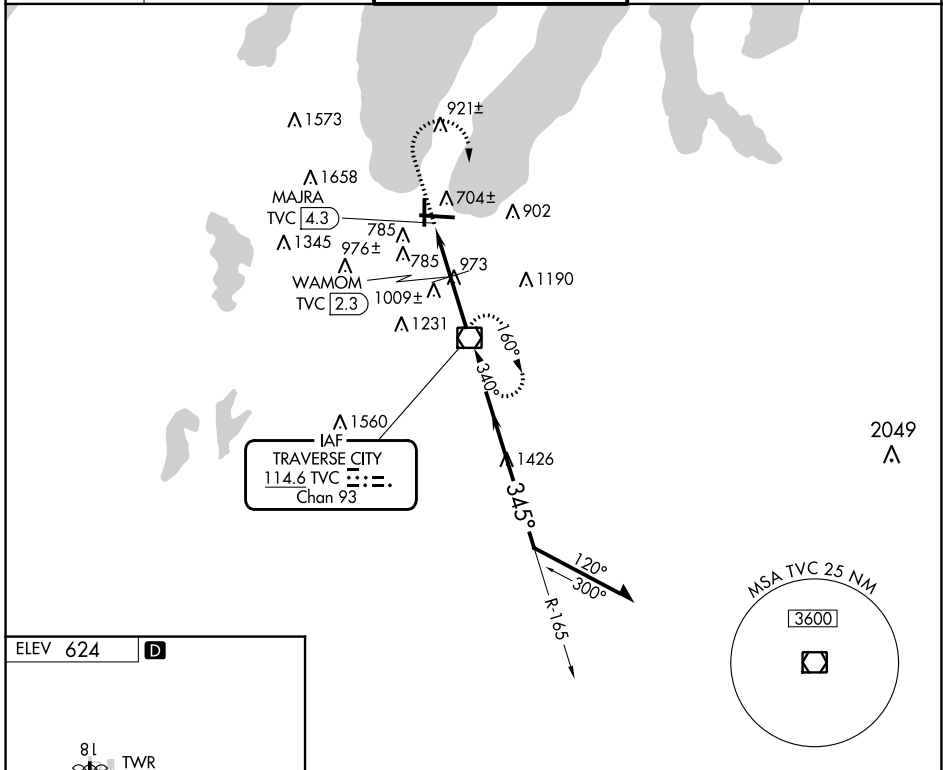


VOR/DME TVC 114.6 Chan 93	APP CRS 345°	Rwy Idg TDZE Apt Elev N/A N/A 624
---	------------------------	---

VOR-A
CHERRY CAPITAL (TVC)

<p>▽ ▲ When local altimeter setting not received, use Bellaire altimeter setting and increase all MDA 60 feet and all Cat C visibility 1/4 mile.</p>		<p>MISSED APPROACH: Climb to 1800 then climbing right turn to 3000 direct TVC VOR/DME and hold.</p>		
ATIS 119.175	MINNEAPOLIS CENTER 132.9 338.3	TRAVERSE CITY TOWER * 124.2 (CTAF) 0 348.6	GND CON 121.8 348.6	UNICOM 122.95



WAMOM TVC 2.3	MAJRA TVC 4.3	*1440	2200	3000	
CATEGORY		A	B	C	D
C CIRCLING		1440-1 1/4	816 (900-1 1/4)	1500-2 1/2 876 (900-2 1/2)	1720-3 1096 (1100-3)
WAMOM FIX MINIMUMS (DME REQUIRED)					
C CIRCLING		1300-1	676 (700-1)	1500-2 1/2 876 (900-2 1/2)	1720-3 1096 (1100-3)

EC-1, 03 OCT 2024 to 31 OCT 2024

EC-1, 03 OCT 2024 to 31 OCT 2024