

# HI-TACAN Z RWY 18R

TACAN VAD Chan <b>80</b>	APCH CRS <b>180°</b>	Rwy Idg TDZE Arprt Elev <b>8002</b> <b>231</b> <b>233</b>
-----------------------------	-------------------------	--

USAF]

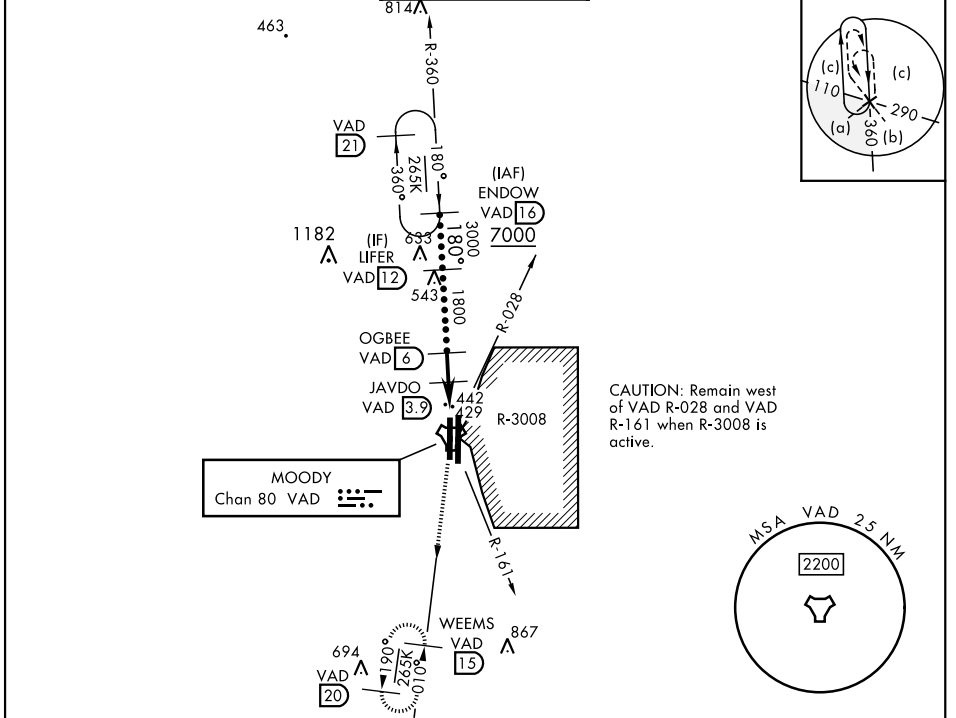
MOODY AFB (KVAD)

\* When ALS inop, increase vis to 1 3/8 miles.

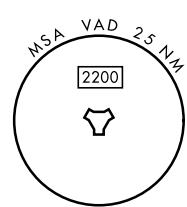
MALSR 

MISSED APPROACH: Climb to 3000 on VAD TACAN R-190 to WEEMS and hold.

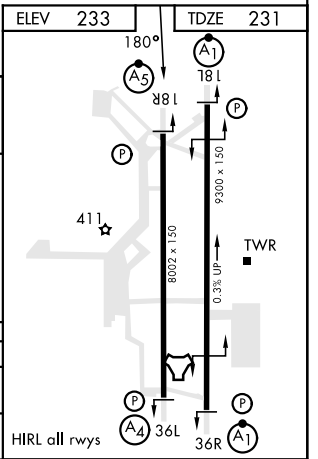
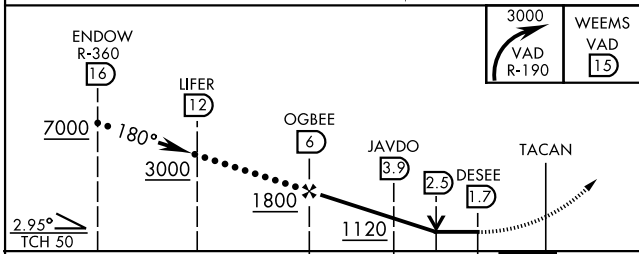
ATIS ★ <b>273.5</b>	VALDOSTA APP CON <b>126.6 285.6</b>	TOWER ★ <b>128.45 (CTAF) 257.625</b>	GND CON <b>138.95 275.8</b>	CLNC DEL <b>120.625 296.7</b>
------------------------	--	---	--------------------------------	----------------------------------



CAUTION: Remain west of VAD R-028 and VAD R-161 when R-3008 is active.



ELEV 233	TDZE 231
----------	----------



CATEGORY	C	D	E
S-18R *	700/50	469 (500-1)	
CIRCLING	760-1 1/2 527 (600-1 1/2)	800-2	567 (600-2)

# HI-TACAN Z RWY 18R

SE-4, 03 OCT 2024 to 31 OCT 2024

SE-4, 03 OCT 2024 to 31 OCT 2024