

APP CRS	Rwy Idg	8151
099°	TDZE	16
	Apt Elev	20

RNAV (RNP) Z RWY 10L

PALM BEACH INTL (PBI)

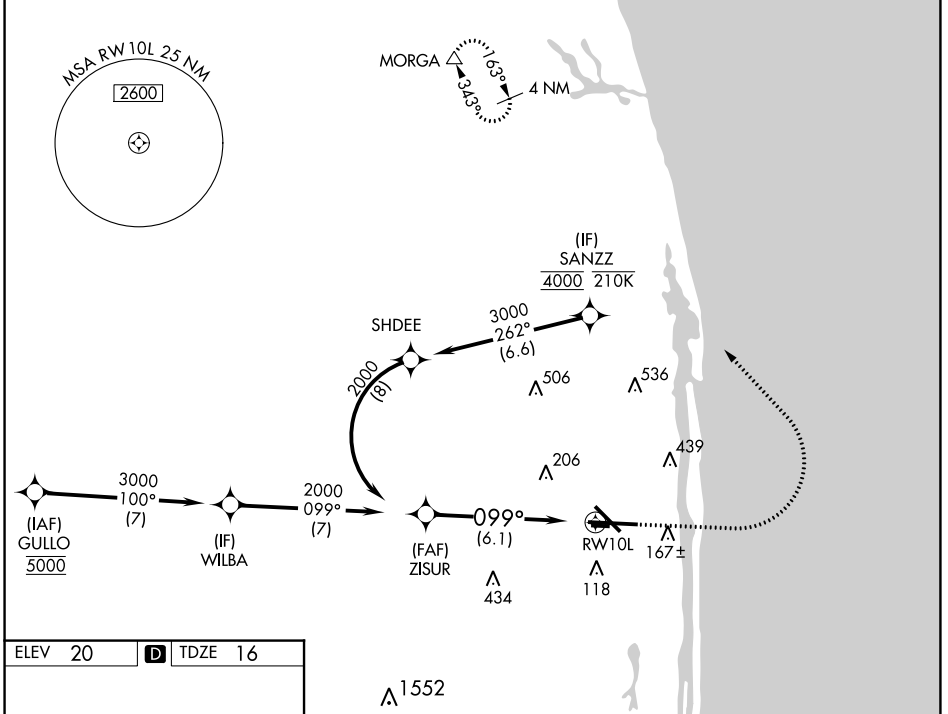
RNP AR APCH - GPS.

⚠ For uncompensated Baro-VNAV systems, procedure NA below 6°C or above 54°C.

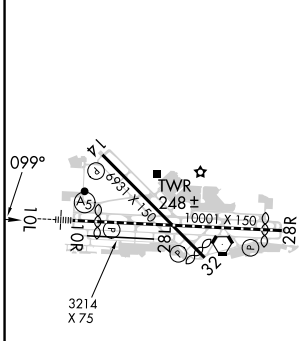
MALSR

MISSED APPROACH: Climb to 1000 then climbing left turn to 3000 direct MORGA and hold.

D-ATIS	PALM BEACH APP CON	PALM BEACH TOWER	GND CON	CLNC DEL	CPDLC
123.75	128.3 317.4	119.1 257.8	121.9 284.6	121.6 284.6	

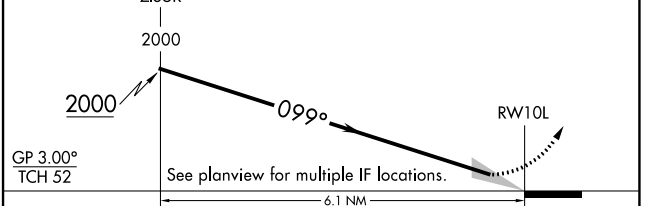


ELEV	20	D	TDZE	16
------	----	----------	------	----



VGSI and RNAV glidepath not coincident (VGSI Angle 3.00/TCH 68).

1000 3000 MORGA



CATEGORY	A	B	C	D
RNP 0.30 DA	355/26 339 (400-1/2)			

HIRL Rwy 10L-28R
 REIL Rws 10R, 14, 28L, 28R and 32
 MIRL Rws 14-32 and 10R-28L

AUTHORIZATION REQUIRED

SE-3, 03 OCT 2024 to 31 OCT 2024

SE-3, 03 OCT 2024 to 31 OCT 2024