

NDB GTP 245	APP CRS 225°	Rwy Idg 5504
		TDZE 242
		Apt Elev 264

NDB RWY 22

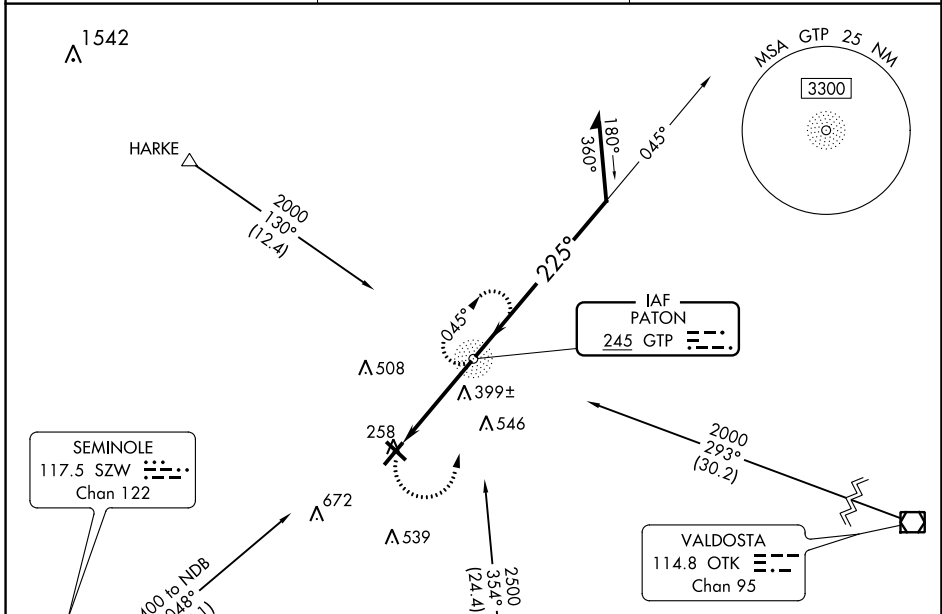
THOMASVILLE RGNL (TVI)

⚠ When local altimeter setting not received, use Valdosta altimeter setting and increase all MDA 100 feet, increase S-22 Cats C/D visibility 3/4 SM and Circling Cats C/D visibility 1/4 SM. For inop ALS, increase S-22 Cats C/D visibility to 1 3/4 SM. For inop ALS when using the Valdosta altimeter setting, increase S-22 Cat D visibility to 1 1/2 SM. Circling Rwy 4, 14, 32 NA at night.

MALSF
 MALSF

MISSED APPROACH:
 Climbing left turn to 2000
 direct GTP NDB and hold,
 continue climb-in-hold to 2000.

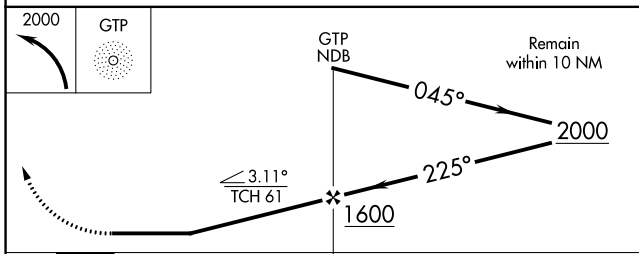
AWOS-3PT 119.175	VALDOSTA APP CON * 126.6 285.6	UNICOM 123.075 (CTAF)
----------------------------	--	---------------------------------



ELEV 264	D	TDZE 242
----------	----------	----------

Inset diagram details:

- Runway 22 (225°).
- Runway 14 (135°).
- Runway 32 (315°).
- Runway 4 (045°).
- 6004 X 101 taxiway.
- 4599 X 100 taxiway.
- 0.3° UP.



CATEGORY	A	B	C	D
S-22	700-3/4 458 (500-3/4)		700-1 458 (500-1)	
C CIRCLING	700-1 436 (500-1)	800-1 536 (600-1)	900-1 3/4 636 (700-1 3/4)	1040-2 1/2 776 (800-2 1/2)

LIRL Rwy 14-32
 HIRL Rwy 4-22

FAF to MAP 4 NM

Knots	60	90	120	150	180
Min:Sec	4:00	2:40	2:00	1:36	1:20

SE-4, 03 OCT 2024 to 31 OCT 2024

SE-4, 03 OCT 2024 to 31 OCT 2024