


WAAS CH 69604 W22A	APP CRS 225°	Rwy Idg TDZE Apt Elev	5504 242 264
--	------------------------	-----------------------------	---

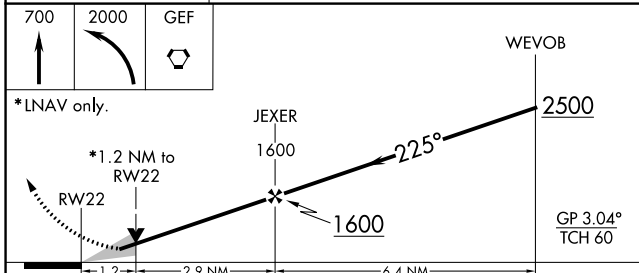
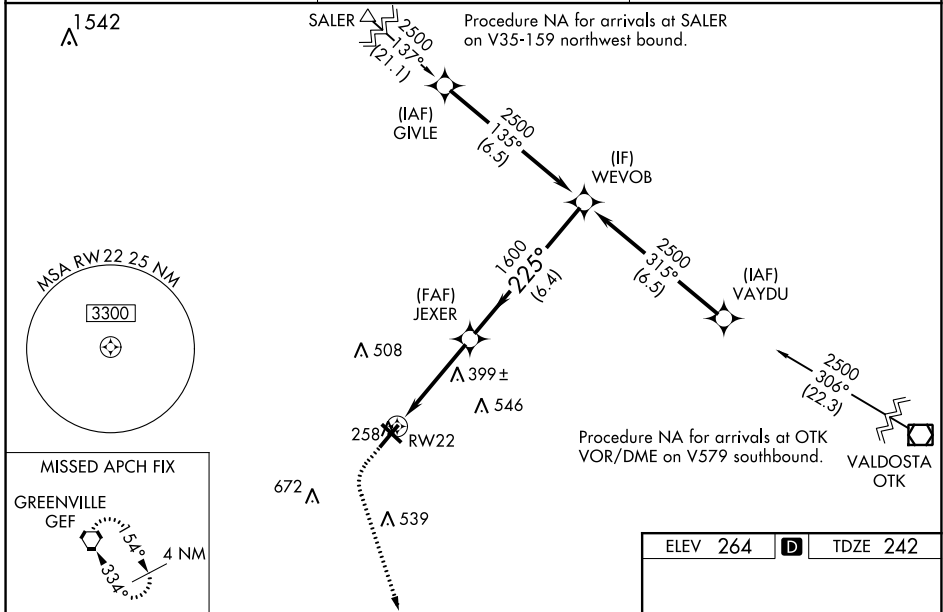
RNAV (GPS) RWY 22

THOMASVILLE RGNL (TVI)

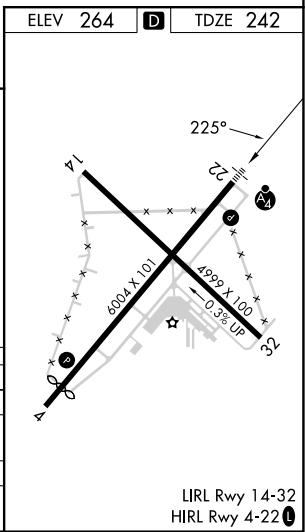
⚠ For uncompensated Baro-VNAV systems, LNAV/VNAV NA below -15°C (5°F) or above 53°C (127°F). DME/DME RNP-0.3 NA. When local altimeter setting not received, use Valdosta altimeter setting and increase LPV DA to 595, LNAV/VNAV DA to 613 and all MDA 100 feet. Increase LPV all Cats visibility to 7/8 SM, LNAV/VNAV all Cats visibility to 1 SM, and increase LNAV Cat C/D visibility to 1 1/8 SM. Increase Circling Cat C visibility to 2 SM and Circling Cat D visibility to 2 3/4 SM. For inop ALS, increase LPV and LNAV/VNAV all Cats visibility to 7/8 SM, and LNAV Cat C/D visibility to 1 1/8 SM. VDP and Baro-VNAV NA when using Valdosta altimeter setting. Circling Rwy 4, 14, 32 NA at night. For inop ALS when using Valdosta altimeter setting, increase LPV all Cats visibility to 1 1/8 SM, LNAV/VNAV Cat D to 1 1/4 SM and LNAV Cat C/D to 1 3/8 SM.

MALSF

MISSED APPROACH:
 Climb to 700 then climbing left turn to 2000 direct GEF VORTAC and hold.

AWOS-3PT 119.175	VALDOSTA APP CON* 126.6 285.6	UNICOM 123.075 (CTAF) 0
----------------------------	---	-----------------------------------



CATEGORY	A	B	C	D
LPV DA		512-3/4	270 (300-3/4)	
LNAV/VNAV DA		530-3/4	288 (300-3/4)	
LNAV MDA	660-3/4	418 (400-3/4)	660-1	418 (400-1)
CIRCLING	700-1 436 (500-1)	800-1 536 (600-1)	900-1 1/4 636 (700-1 1/4)	1040-2 1/2 776 (800-2 1/2)



SE-4, 03 OCT 2024 to 31 OCT 2024

SE-4, 03 OCT 2024 to 31 OCT 2024