

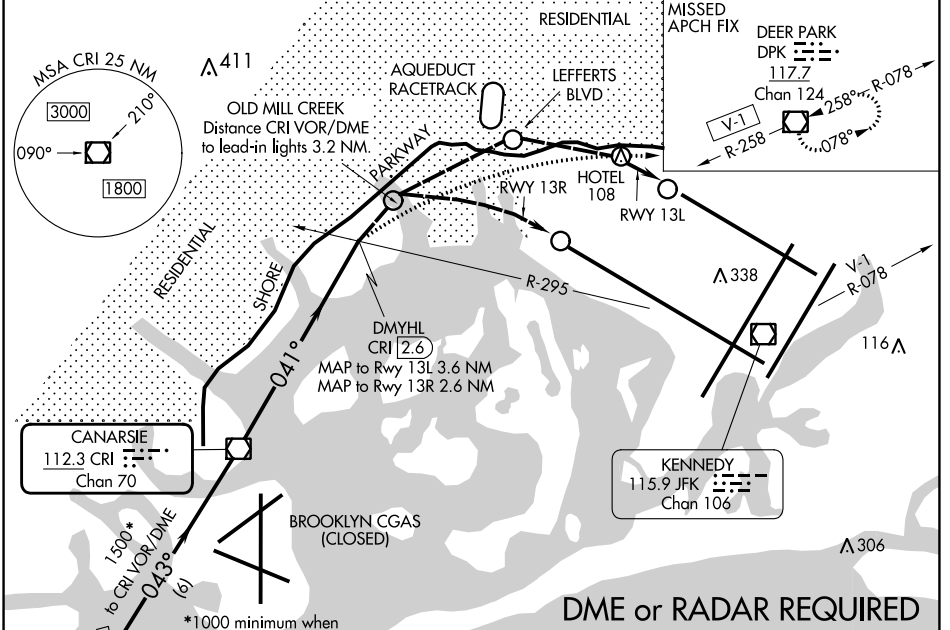
VOR/DME CRI <b>112.3</b> Chan 70	APP CRS <b>041°</b>	Rwy Idg 13R <b>12467</b> TDZE 13L <b>9093</b> Apt Elev <b>13</b>
--	------------------------	--

# VOR or GPS RWY 13L/R

JOHN F KENNEDY INTL (JFK)

For inop lead-in lights, procedure NA.	Rwy 13L ALSF-2 	MISSED APPROACH: At or beyond MAP, climbing right turn to 4000 on heading 100° and V-1 to DPK VOR/DME and hold.

D-ATIS (ARR/DEP)(ARR-NE) (ARR-SW) <b>128.725 117.7 115.4</b>	NEW YORK APP CON <b>128.125 269.0</b>	KENNEDY TOWER Rwys 4R/22L and 13L/31R <b>119.1 281.55</b> Rwys 4L/22R and 13R/31L <b>123.9 281.55</b>	GND CON <b>121.9 348.6</b>	CLNC DEL <b>135.05 348.6</b>	CPDLC
--	--	---	-------------------------------	---------------------------------	-------



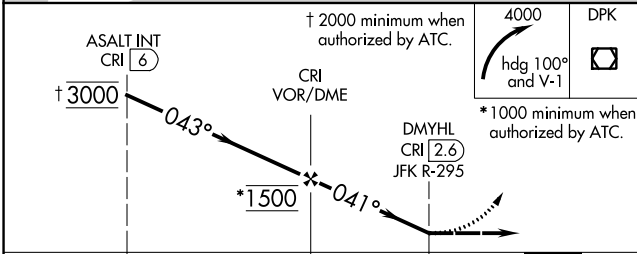
**DME or RADAR REQUIRED**

○ Lead-in light groups

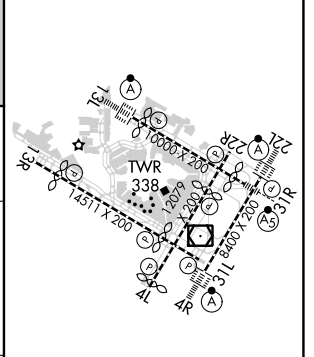
When visual reference established, fly visual to airport via lead-in lights to Rwy 13L or 13R. Close adherence to flight track required for noise abatement.

† 2000 minimum when authorized by ATC.

\* 1000 minimum when authorized by ATC.



ELEV 13	<b>D</b> TDZE 13
---------	------------------



CATEGORY	A	B	C	D
RLLS-13L	800-2 787 (800-2)	800-2½ 787 (800-2¼)	800-2½ 787 (800-2¼)	800-2½ 787 (800-2¼)
RLLS-13R	800-2 787 (800-2)	800-2½ 787 (800-2¼)	800-2½ 787 (800-2¼)	800-2½ 787 (800-2¼)

RLS Rwys 13L and 13R	FAF to MAP 2.6 NM				
HRL all Rwys	FAF to MAP 2.6 NM				
TDZ/CL Rwys 4L, 4R, 13L, 22L and 31R	FAF to MAP 2.6 NM				
Knots	60	90	120	150	180
Min:Sec	2:36	1:44	1:18	1:02	0:52

NE-2, 03 OCT 2024 to 31 OCT 2024

NE-2, 03 OCT 2024 to 31 OCT 2024