
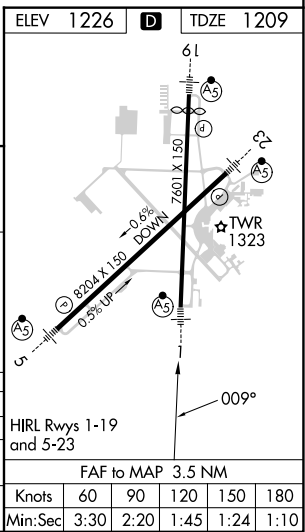
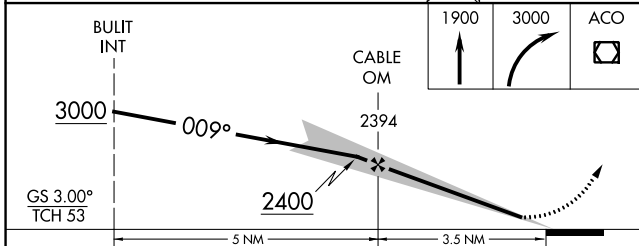
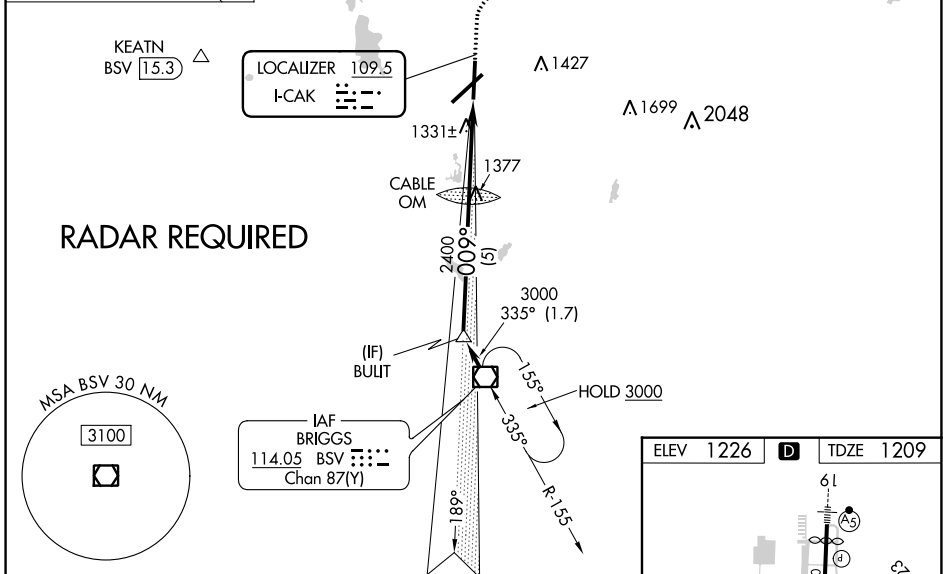
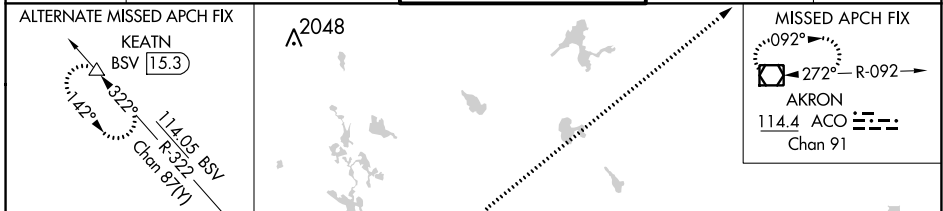


LOC I-CAK 109.5	APP CRS 009°	Rwy Idg 7007
		TDZE 1209
		Apt Elev 1226

ILS or LOC RWY 1
AKRON-CANTON RGNL (CAK)

<p>▽ **RVR 1800 authorized with the use of FD or AP or HUD to DA.</p>	<p>MALSR</p> 	<p>MISSED APPROACH: Climb to 1900 then climbing right turn to 3000 direct ACO VOR/DME and hold.</p>
--	--	---

<p>ATIS 121.05</p>	<p>CLEVELAND APP CON * 125.5 269.25</p>	<p>AKRON-CANTON TOWER 134.75 279.575</p>	<p>GND CON 121.7 348.6</p>	<p>CLNC DEL 132.05</p>
-------------------------------	--	---	---------------------------------------	-----------------------------------



CATEGORY	A	B	C	D
S-ILS 1 **	1409/24 200 (200-½)			
S-LOC 1	1600/24 391 (400-½)		1600/40 391 (400-¾)	
CIRCLING	1760-1 534 (600-1)	1780-1½ 554 (600-1½)	1800-2 574 (600-2)	

EC-2, 03 OCT 2024 to 31 OCT 2024

EC-2, 03 OCT 2024 to 31 OCT 2024