

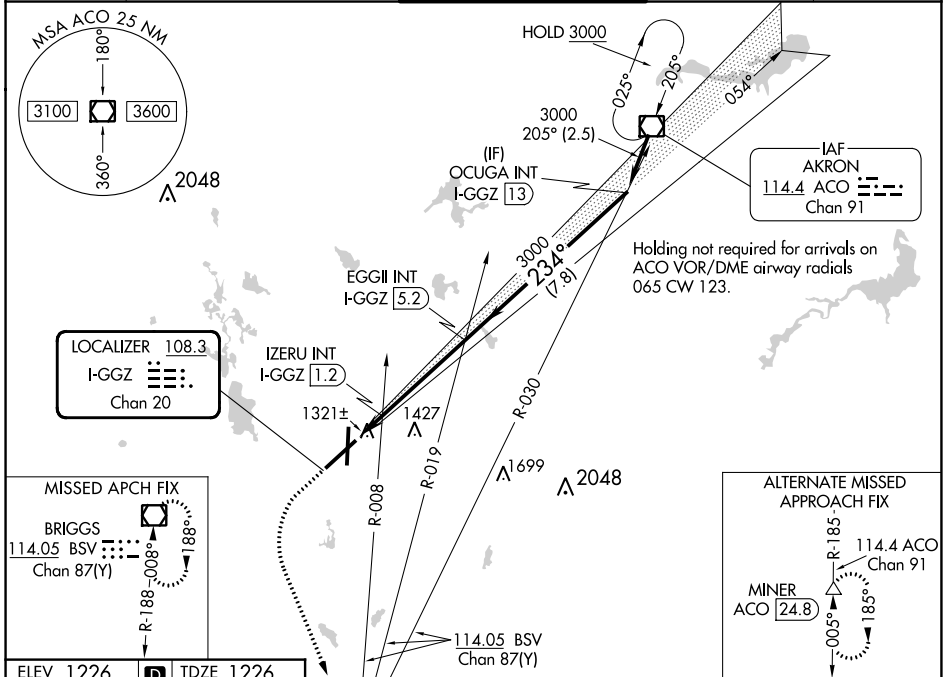
LOC/DME I-GGZ <b>108.3</b> Chan 20	APP CRS <b>234°</b>	Rwy Idg TDZE Apt Elev	<b>8204</b> <b>1226</b> <b>1226</b>
------------------------------------------	------------------------	-----------------------------	-------------------------------------------

# ILS or LOC RWY 23

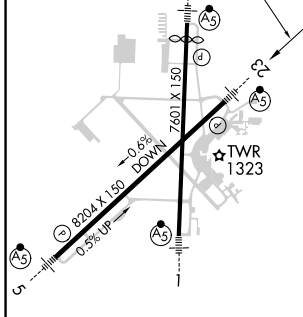
AKRON-CANTON RGNL (CAK)

**MALSRL** MISSED APPROACH: Climb to 2500 then climbing left turn to 3000 direct BSV VOR/DME and hold.

ATIS <b>121.05</b>	CLEVELAND APP CON * <b>125.5 269.25</b>	AKRON-CANTON TOWER <b>134.75 279.575</b>	GND CON <b>121.7 348.6</b>	CLNC DEL <b>132.05</b>
-----------------------	--------------------------------------------	---------------------------------------------	-------------------------------	---------------------------



ELEV 1226	<b>D</b>	TDZE 1226
-----------	----------	-----------



CATEGORY	A	B	C	D
S-ILS 23	**1426/24 200 (200-½)			
S-LOC 23	1700/24	474 (500-½)	1700/50 474 (500-1)	
CIRCLING	1760-1	534 (600-1)	1780-1½ 554 (600-1½)	1800-2 574 (600-2)

IZERU FIX MINIMUMS				
S-LOC 23	1580/24 354 (400-½)		1580/40 354 (400-¾)	
CIRCLING	1760-1	534 (600-1)	1780-1½ 554 (600-1½)	1800-2 574 (600-2)

HIRL Rwys 1-19 and 5-23

FAF to MAP 5.4 NM

Knots	60	90	120	150	180
Min:Sec	5:24	3:36	2:42	2:10	1:48

EC-2, 03 OCT 2024 to 31 OCT 2024

EC-2, 03 OCT 2024 to 31 OCT 2024