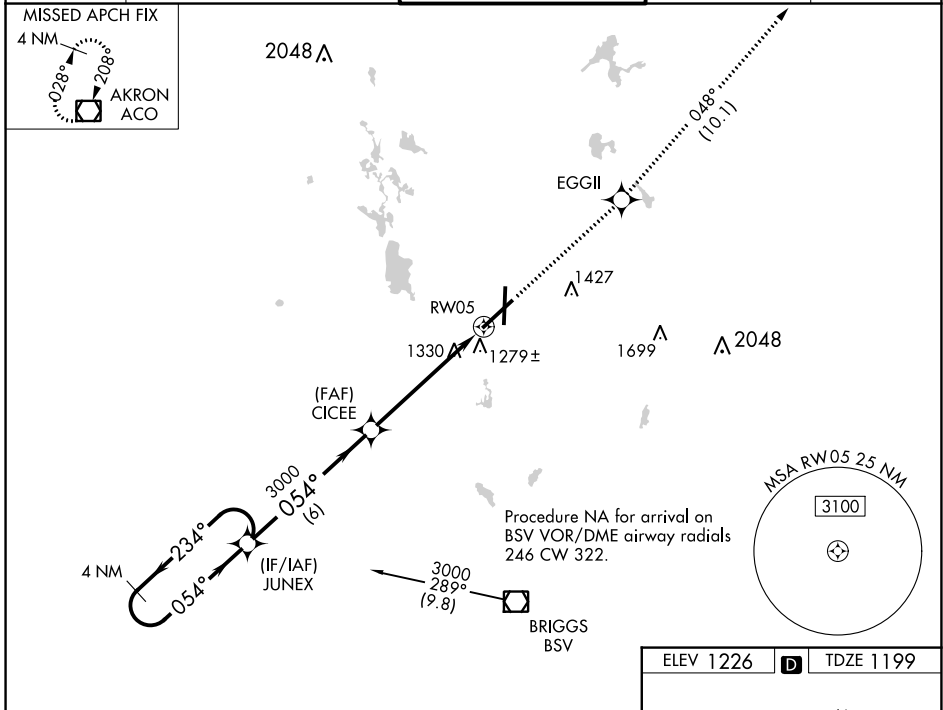


WAAS CH <b>77620</b> <b>W05A</b>	APP CRS <b>054°</b>	Rwy Idg TDZE <b>1199</b> Apt Elev <b>1226</b>	<b>8204</b>
--	------------------------	---	-------------

# RNAV (GPS) RWY 5

## AKRON-CANTON RGNL (CAK)

<p><b>▼</b> For uncompensated Baro-VNAV systems, LNAV/VNAV NA below -17°C (2°F) or above 46°C (114°F). DME/DME RNP-0.3 NA. ** RVR 1800 authorized with use of FD or AP or HUD to DA.</p>		<p><b>MALSR</b></p>	<p><b>MISSED APPROACH:</b> Climb to 3000 direct EGGII and on track 048° to ACO VOR/DME and hold.</p>	
<p><b>ATIS</b> <b>121.05</b></p>	<p><b>CLEVELAND APP CON *</b> <b>125.5 269.25</b></p>	<p><b>AKRON-CANTON TOWER</b> <b>134.75 279.575</b></p>	<p><b>GND CON</b> <b>121.7 348.6</b></p>	<p><b>CLNC DEL</b> <b>132.05</b></p>



EC-2, 03 OCT 2024 to 31 OCT 2024

EC-2, 03 OCT 2024 to 31 OCT 2024

<p>4 NM Holding Pattern</p> <p>JUNEX                      CICEE</p> <p>3000 ← 234°                      054° → 3000</p> <p>GP 3.00°                      054°</p> <p>TCH 50</p> <p>6 NM                      4.2 NM                      1.3 NM</p>					<p>3000</p>	<p>tr 048°</p>	<p>ACO</p>
<p>* 1.3 NM to RWY 5</p> <p>* LNAV only</p>							
CATEGORY	A	B	C	D			
LPV DA**		1399/24	200 (200-½)				
LNAV/VNAV DA		1577/50	378 (400-1)				
LNAV MDA	1640/24	441 (500-½)	1640/40 441 (500-¾)	1640/50 441 (500-1)			
CIRCLING	1760-1	534 (600-1)	1780-1½ 554 (600-1½)	1800-2 574 (600-2)			

