
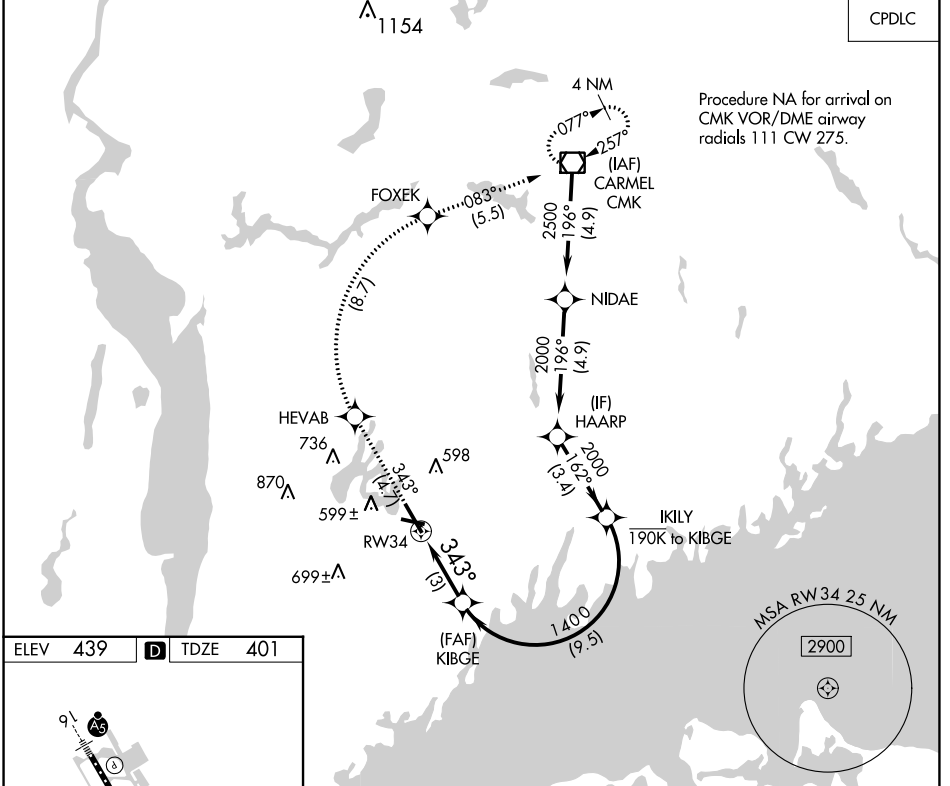


APP CRS 343°	Rwy Idg	6549
	TDZE	401
	Apt Elev	439

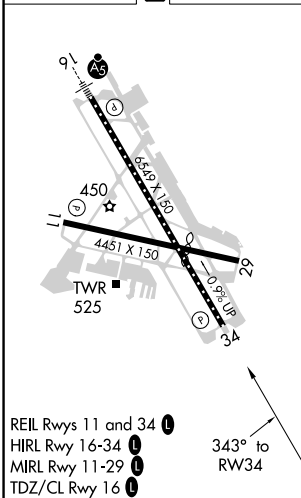
RNAV (RNP) Z RWY 34
WESTCHESTER COUNTY (HPN)

 For uncompensated Baro-VNAV systems, procedure NA below -14°C (7°F) or above 54°C (130°F). RF required. GPS required.		MISSED APPROACH: Climb to 3000 on track 343° to HEVAB, right turn to FOXEK, then on track 083° to CMK VOR/DME and hold.				
D-ATIS 133.8	NEW YORK APP CON 120.8 126.4 257.65	WESTCHESTER TOWER ★ 118.575 (CTAF) 0 284.65	GND CON 121.825	CLNC DEL 127.25	CLNC DEL 126.4 (when twr closed)	UNICOM 122.95



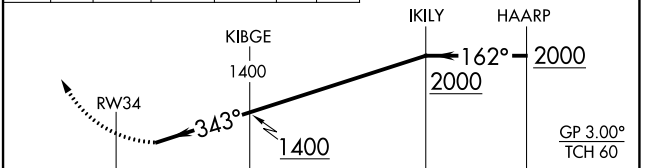
Procedure NA for arrival on CMK VOR/DME airway radials 111 CW 275.

ELEV	439	D	TDZE	401
------	------------	----------	------	------------



REIL Rwys 11 and 34 (L)
HIRL Rwy 16-34 (L)
MIRL Rwy 11-29 (L)
TDZ/CL Rwy 16 (L)

3000 ↑	tr 343°	HEVAB	→	FOXEK	tr 083°	CMK	VGSI and RNAV glidepath not coincident (VGSI Angle 3.00/TCH 56).
-----------	------------	-------	---	-------	------------	-----	--



CATEGORY	A	B	C	D
RNP 0.30 DA	788-1 $\frac{3}{8}$		387 (400-1 $\frac{3}{8}$)	

AUTHORIZATION REQUIRED

NE-2, 03 OCT 2024 to 31 OCT 2024

NE-2, 03 OCT 2024 to 31 OCT 2024