

LOC/DME I-ZK 109.9 Chan 36	APP CRS 222°	Rwy Idg 7502 TDZE 933 Apt Elev 962
---	------------------------	---

ILS or LOC RWY 22

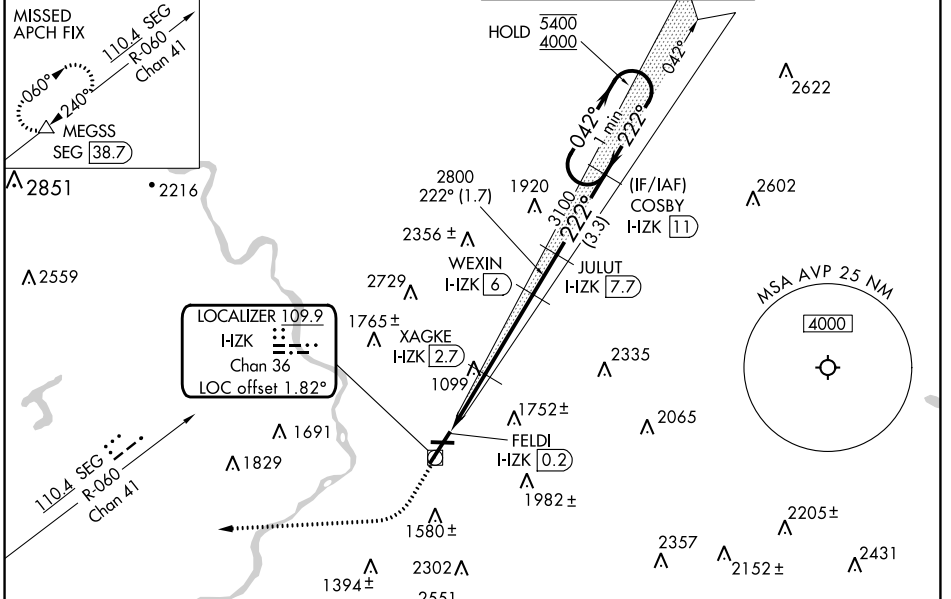
WILKES-BARRE/SCRANTON INTL (AVP)

RADAR required for procedure entry. DME required.

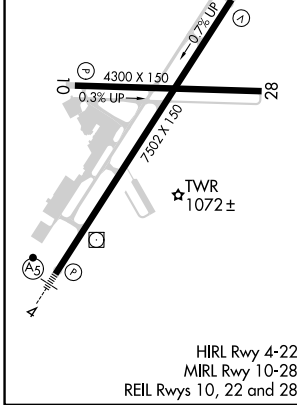
⚠ Circling NA for Cats C and D southeast of Rwy 4-22.
Circling Rwy 28 NA at night.

MISSED APPROACH: Climb to 1500 then climbing right turn to 4000 on heading 275° and SEG VOR/DME R-060 to MEGSS/SEG 38.7 DME and hold.

ATIS 135.75	WILKES-BARRE APP CON 120.95 256.7 126.3 256.7 (101°-279°)	WILKES-BARRE TOWER 120.1 257.8	GND CON 121.9
-----------------------	---	--	-------------------------



ELEV 962	D	TDZE 933
----------	----------	----------



1500	4000	MEGSS	VGSi and ILS glidepath not coincident (VGSi Angle 3.00/TCH 54).		One Minute Holding Pattern
↑	hdg 275°	SEG R-060	JULUT I-HZK 7.7	COSBY I-HZK 11	
			XAGKE I-HZK 2.7	WEXIN I-HZK 6	
			FELDI I-HZK 0.2		
			1740	2800	
			1.4 NM	1.1	3.3 NM
CATEGORY	A	B	C	D	
S-ILS 22	1201/45		268 (300-7%)		
S-LOC 22	1400/55	467 (500-1)		1400-1 $\frac{3}{8}$	467 (500-1 $\frac{3}{8}$)
CIRCLING	1840-1 $\frac{1}{4}$ 878 (900-1 $\frac{1}{4}$)	1980-1 $\frac{1}{2}$ 1018 (1100-1 $\frac{1}{2}$)	1980-3 1018 (1100-3)	2280-3 1318 (1400-3)	

NE-4, 03 OCT 2024 to 31 OCT 2024

NE-4, 03 OCT 2024 to 31 OCT 2024