

WAAS CH 97344 W13A	APP CRS 127°	Rwy Idg TDZE Apt Elev	7510 5723 5759
--	------------------------	-----------------------------	---

RNAV (GPS) RWY 13

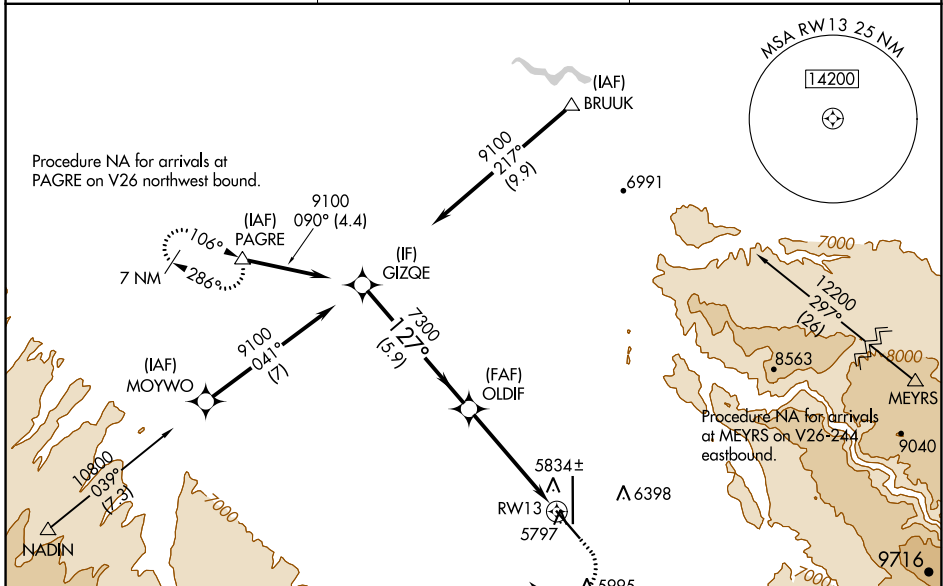
MONTROSE RGNL (MTJ)

RNP APCH.

⚠ Circling NA east of Rwy 17 and northeast of Rwy 31. Circling Rwy 31 NA at night. Rwy 13 helicopter visibility reduction below 1 SM NA. For uncompensated Baro-VNAV systems, LNAV/VNAV NA below -19°C or above 54°C. Straight-in/Circling Rwy 13 at night, operational VGSI required, remain on or above VGSI glidepath until threshold.

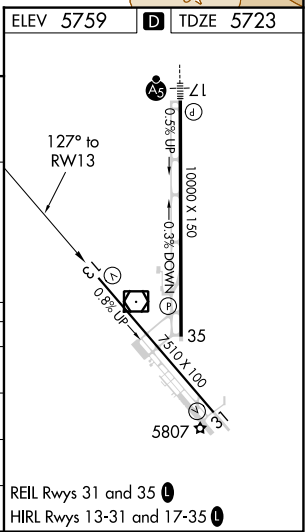
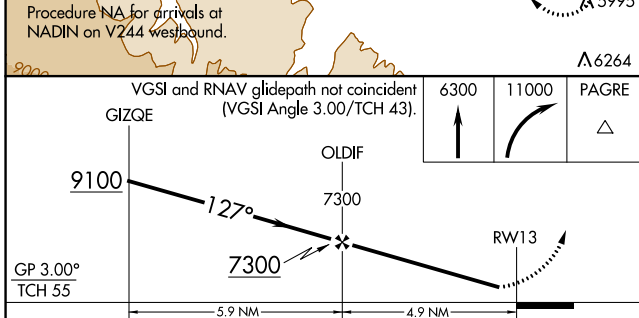
MISSED APPROACH: (Do not exceed 200K until PAGRE) Climb to 6300 then climbing right turn to 11000 direct PAGRE and hold, continue climb-in-hold to 11000.

ASOS 135.225	DENVER CENTER 127.1 343.65	UNICOM 122.8 (CTAF) 0
------------------------	--------------------------------------	---------------------------------



SW-1, 03 OCT 2024 to 31 OCT 2024

SW-1, 03 OCT 2024 to 31 OCT 2024



CATEGORY	A	B	C	D
LPV DA	5973-1		250 (300-1)	
LNAV/VNAV DA	6101-1		378 (400-1)	
LNAV MDA	6160-1	437 (500-1)	6160-1¼	437 (500-1¼)
C CIRCLING	6280-1 521 (600-1)	6320-1 561 (600-1)	6380-1¾ 621 (700-1¾)	6800-3 1041 (1100-3)

REIL Rwy 31 and 35
HIRL Rwy 13-31 and 17-35