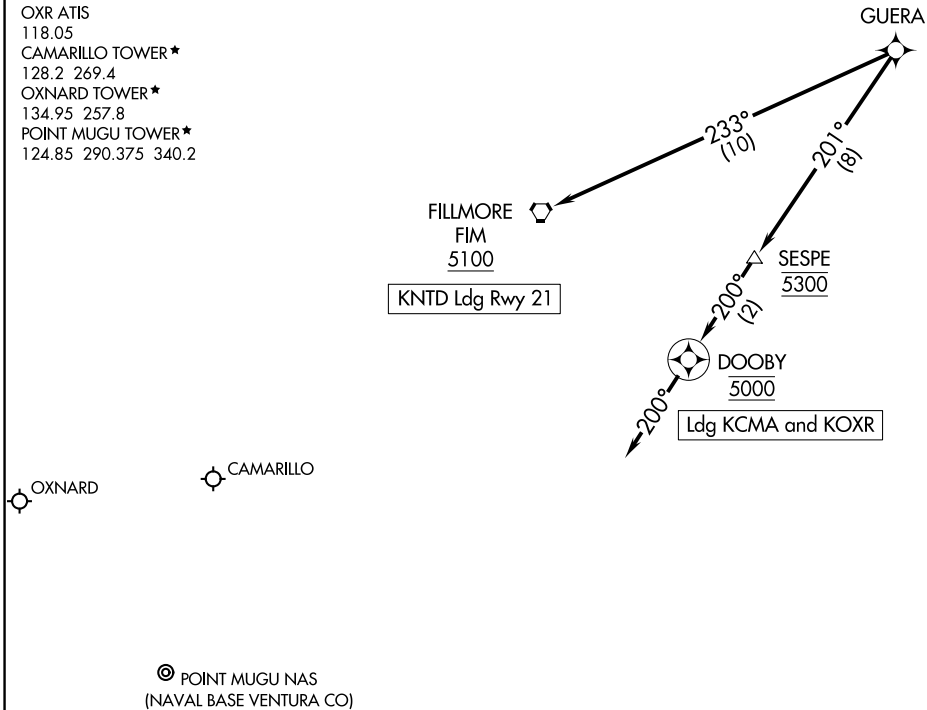


SOCAL APP CON
 120.4 360.6
 CMA ATIS
 126.025
 KNND ATIS ★
 125.55 363.05
 OXR ATIS
 118.05
 CAMARILLO TOWER ★
 128.2 269.4
 OXNARD TOWER ★
 134.95 257.8
 POINT MUGU TOWER ★
 124.85 290.375 340.2



SW-3, 03 OCT 2024 to 31 OCT 2024

SW-3, 03 OCT 2024 to 31 OCT 2024

- NOTE: RADAR required.
- NOTE: RNAV 1.
- NOTE: DME/DME/IRU or GPS required.
- NOTE: Turbojet and turboprop aircraft only.

NOTE: Chart not to scale.

ARRIVAL ROUTE DESCRIPTION

LANDING KNTD RWY 21: From GUERA on track 233° to FIM VORTAC at or above 5100. Expect ILS Y or LOC/DME RWY 21 approach.

LANDING KOXR/KCMA: From GUERA on track 201° to cross SESPE at 5300, then on track 200° to cross DOOBY at 5000, then on track 200°. Expect RADAR vectors to final approach course.