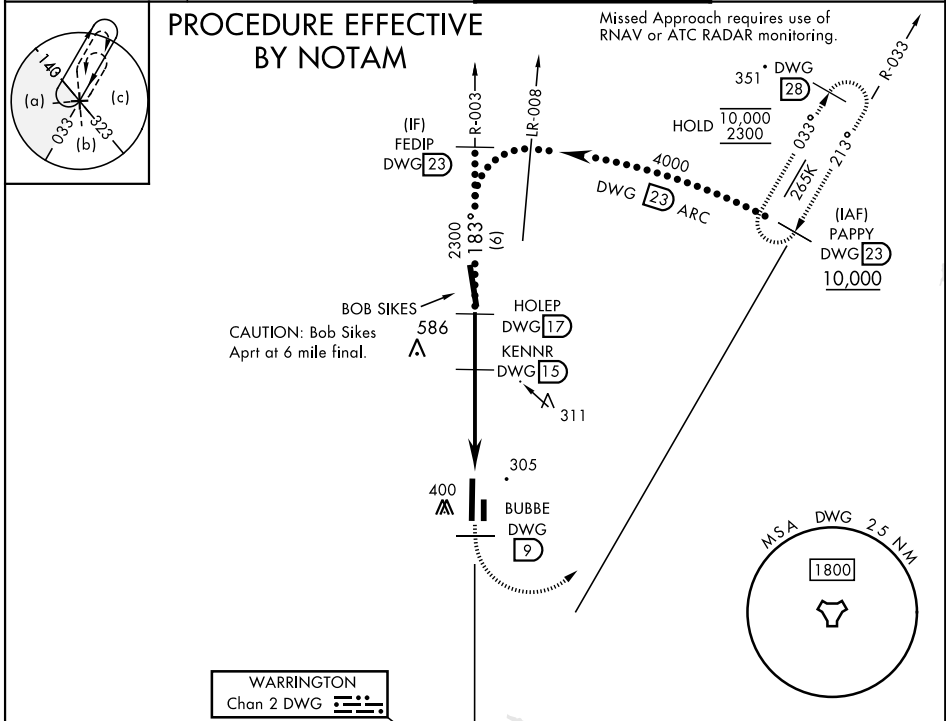


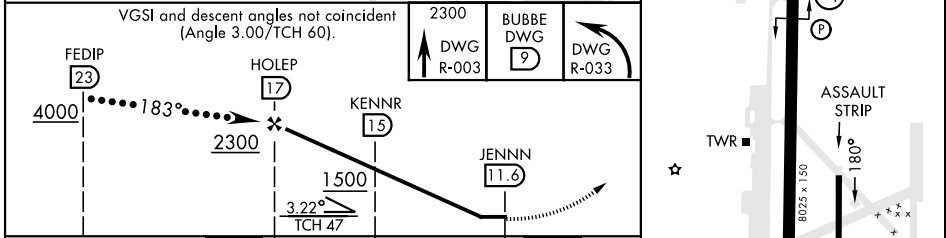
HI-TACAN Y RWY 18

TACAN DWG Chan 2	APCH CRS 183°	Rwy ldg TDZE Arprt Elev 8025 191 195	AL-699 [USAF]	DUKE FLD (EGLIN AF AUX NR3) (KEGI)
* When ALS inop, increase RVR to 55, vis to 1 mile.			ALSF-1 	MISSED APPROACH: Climb on DWG R-003 to 9 DME (BUBBE), then climbing left turn to 2300 direct DWG R-033/23 DME (PAPPY) and hold.

ATIS ★ 244.575	EGLIN APP CON 125.1 281.45 (271°-089°) 132.1 360.6 (090°-270°)	TOWER ★ 133.2 290.425	GND CON 123.25 251.125
--------------------------	------------------------------------------------------------------------------------	---------------------------------	----------------------------------



WARRINGTON Chan 2 DWG	ELEV 195	TDZE 191
--------------------------	----------	----------



CATEGORY	C	D	E
S-18*	560/35	369 (400-5%)	
CIRCLING	700-1½ 505 (600-1½)	760-2 565 (600-2)	780-2 585 (600-2)

HI-TACAN Y RWY 18



SE-3, 03 OCT 2024 to 31 OCT 2024

SE-3, 03 OCT 2024 to 31 OCT 2024