

VALPARAISO, FLORIDA

# RNAV (GPS) Z RWY 18

APCH CRS	Rwy Idg	<b>8025</b>
<b>184°</b>	TDZE	<b>191</b>
	Arprt Elev	<b>195</b>

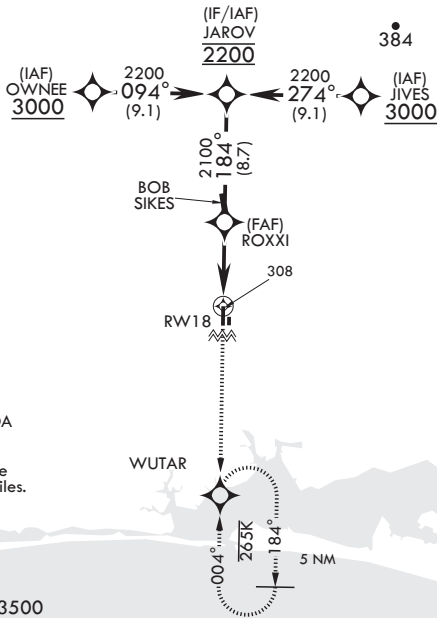
AL-699 (USAF)

DUKE FIELD (EGLIN AF AUX NR 3) (KEGI)

RNP APCH	ALS-1	MISSED APPROACH: Climb to 3000 direct WUTAR and hold.
<p>* When ALS inop, increase RVR to 40, vis to 3/4 mile.                  ** When ALS inop, increase RVR to 55, vis to 1 mile.</p>		

ATIS* <b>244.575</b>	APP CON <b>125.1 281.45 271°-089°</b> <b>132.1 360.6 090°-270°</b>	TOWER* <b>133.2 290.425</b>	GND CON <b>123.25 251.125</b>
-------------------------	--	--------------------------------	----------------------------------

\*\*\* When ALS inop, increase CAT AB RVR to 55, vis to 1 mile; CAT CDE RVR to 60, vis to 1 1/8 miles.



Circling Visibility Reduction by Helicopters NA.

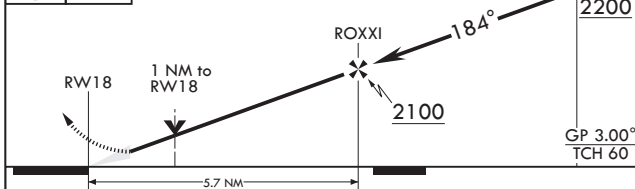
For uncompensated Baro-VNAV systems, LNAV/VNAV NA below -15°C or above 54°C.

When Local altimeter setting not received, use Bob Sikes altimeter setting.

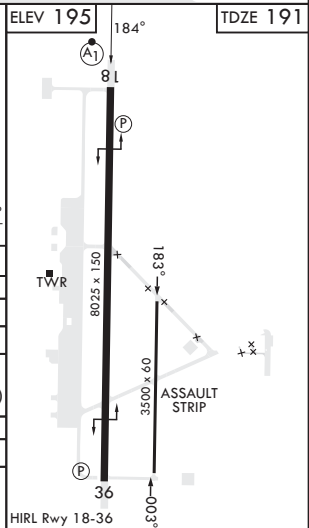
With Bob Sikes altimeter setting:  
 Increase LNAV/VNAV DA by 21 and HAT by 21  
 LNAV not authorized.  
 When ALS inop, increase RVR to 45, vis to 7/8 miles.

EMERG SAFE ALT 100 NM 3500

3000 WUTAR VDP NA with Bob Sikes Altimeter Setting.



CATEGORY	A	B	C	D	E
LNAV/VNAV DA*	441/24		250	(300-1/2)	
LNAV MDA**	560/24	369 (400-1/2)	560/35	369	(400-3/8)
<b>C</b> CIRCLING	660-1 465 (500-1)	700-1 505 (600-1)	700-1 1/2 505 (600-1 1/2)	760-2 565 (600-2)	780-2 585 (600-2)
BOB SIKES ALTIMETER SETTING MINIMUMS					
LNAV MDA***	580/24	389 (400-1/2)	580/35	389	(400-3/8)
<b>C</b> CIRCLING	680-1 485 (500-1)	740-1 545 (600-1)	740-1 1/2 545 (600-1 1/2)	760-2 565 (600-2)	800-2 1/4 605 (700-2 1/4)



VALPARAISO, FLORIDA

30°39'N - 86°31'W

DUKE FIELD (EGLIN AF AUX NR 3) (KEGI)

Orig 23MAR23  
TERPS

# RNAV (GPS) Z RWY 18

SE-3, 03 OCT 2024 to 31 OCT 2024

SE-3, 03 OCT 2024 to 31 OCT 2024