

WAAS CH <b>82623</b> <b>W06A</b>	APP CRS <b>061°</b>	Rwy Idg <b>6401</b> TDZE <b>1152</b> Apt Elev <b>1190</b>
--	------------------------	---

# RNAV (GPS) RWY 6

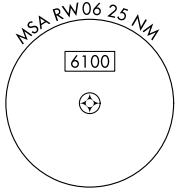
HICKORY RGNL (HKY)

RNP APCH-GPS.

MISSED APPROACH: Climb to 4100 direct PETIC and on track 043° to BZM VOR/DME and hold, continue climb-in-hold to 4100.

**▽**  
**▲** Rwy 6 helicopter visibility reduction below 3/4 SM NA.

ASOS <b>118.325</b>	ATLANTA CENTER <b>125.15 263.0</b>	HICKORY TOWER ★ <b>128.15 (CTAF) 0</b>	GND CON <b>121.7</b>	CLNC DEL <b>121.7</b>	CLNC DEL <b>124.25</b> (When twr closed)
------------------------	---------------------------------------	---	-------------------------	--------------------------	--



▲ 2423

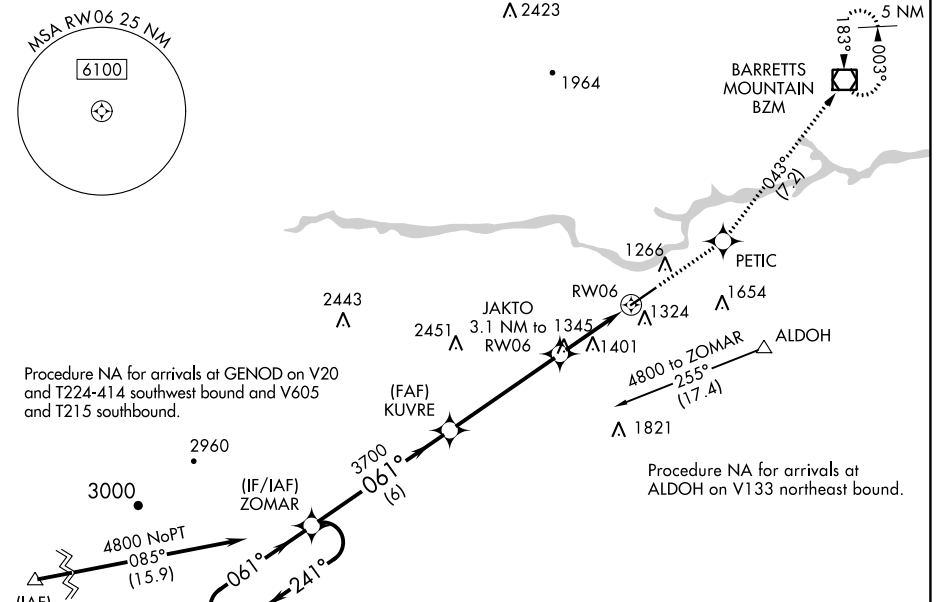
• 1964

BARRETT'S MOUNTAIN  
BZM



Procedure NA for arrivals at GENOD on V20 and T224-414 southwest bound and V605 and T215 southbound.

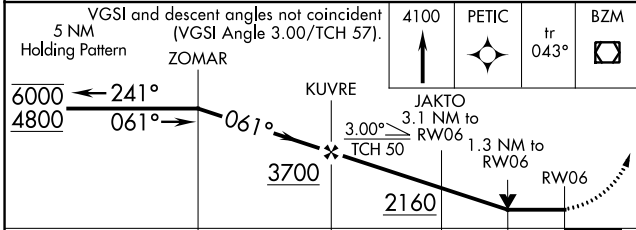
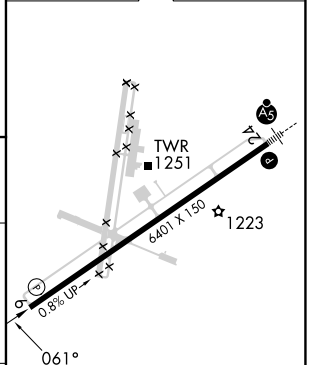
Procedure NA for arrivals at ALDOH on V133 northeast bound.



SE-2, 03 OCT 2024 to 31 OCT 2024

SE-2, 03 OCT 2024 to 31 OCT 2024

ELEV 1190 **D** TDZE 1152



CATEGORY	A	B	C	D
LP MDA	1600-1	448 (500-1)	1600-1 3/8	448 (500-1 3/8)
LNAV MDA	1740-1	588 (600-1)	1740-1 3/4	588 (600-1 3/4)
CIRCLING	1740-1	550 (600-1)	2020-2 1/2 830 (900-2 1/2)	2040-2 3/4 850 (900-2 3/4)