


VOR/DME BZM <b>113.75</b> Chan <b>84 (Y)</b>	APP CRS <b>229°</b>	Rwy Idg TDZE <b>1190</b> Apt Elev <b>1190</b>	<b>6401</b>
--	------------------------	---	-------------

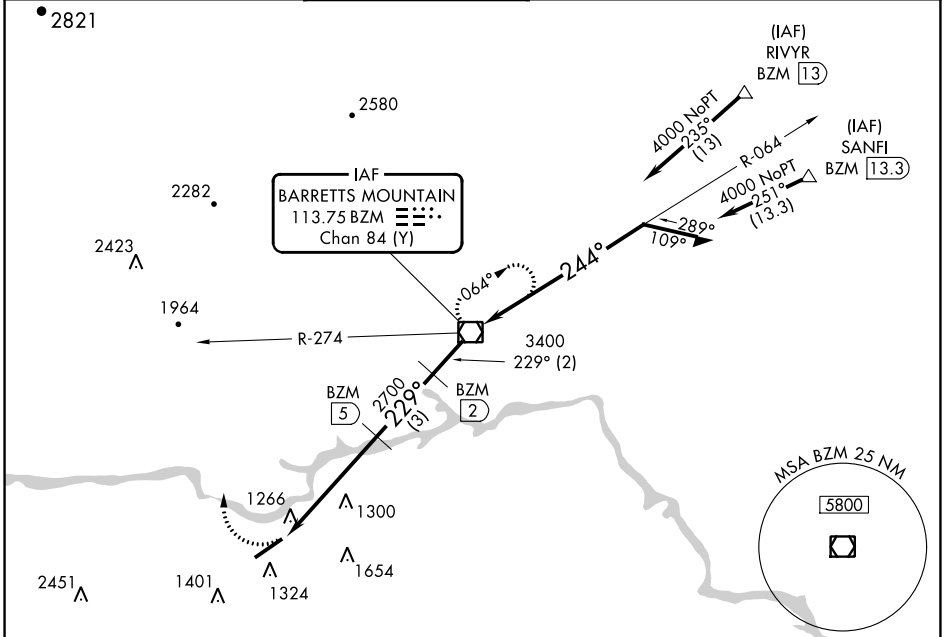
# VOR/DME RWY 24

HICKORY RGNL (HKY)

**⚠** Inop table does not apply. Night landing: Rwy 1/6/19 NA. When local altimeter setting not received, use Morganton altimeter setting and increase all MDA 40 feet and visibility S-24 and Circling Cat D ¼ SM.

**MALSR**  MISSED APPROACH: Climbing right turn to 4000 via heading 340° and BZM R-274 to BZM VOR/DME and hold.

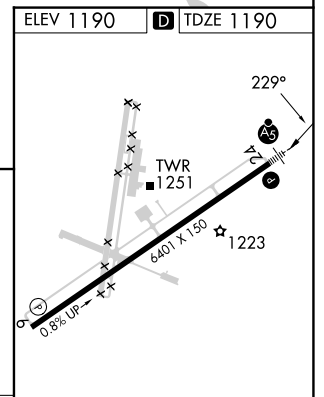
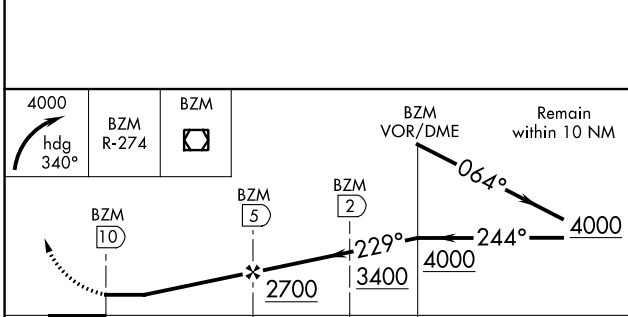
ASOS <b>118.325</b>	ATLANTA CENTER <b>125.15 263.0</b>	HICKORY TOWER ★ <b>128.15 (CTAF) 0</b>	GND CON <b>121.7</b>	CLNC DEL <b>121.7</b>	CLNC DEL <b>124.25</b> (When twr closed)
------------------------	---------------------------------------	---	-------------------------	--------------------------	--



SE-2, 03 OCT 2024 to 31 OCT 2024

SE-2, 03 OCT 2024 to 31 OCT 2024

ELEV 1190	<b>D</b> TDZE 1190
-----------	--------------------



CATEGORY	A	B	C	D
S-24	1600-1	410 (500-1)	1600-1¼	410 (500-1¼)
CIRCLING	1640-1 450 (500-1)	1660-1 470 (500-1)	2020-2½ 830 (900-2½)	2040-2¾ 850 (900-2¾)

HIRL Rwy 6-24 **0**  
REIL Rwy 6