

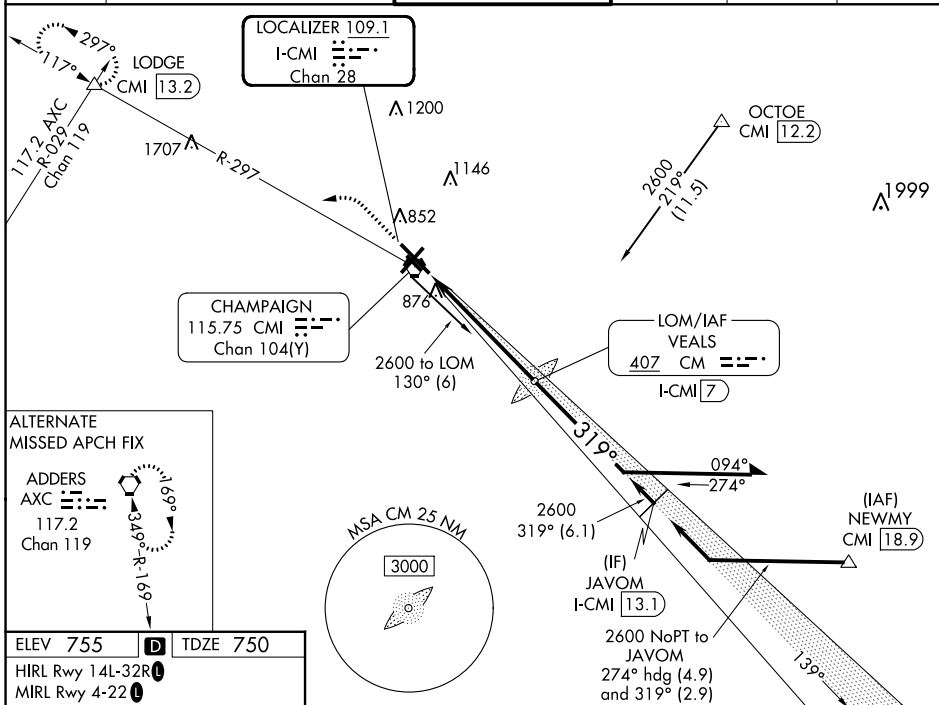
LOC/DME I-CMI <b>109.1</b> Chan 28	APP CRS <b>319°</b>	Rwy Idg TDZE Apt Elev <b>8101</b> <b>750</b> <b>755</b>
--	------------------------	--

# ILS or LOC RWY 32R

UNIVERSITY OF ILLINOIS/WILLARD (CMI)

For inop ALS, increase S-LOC 32R Cat C and D visibility to RVR 6000. *RVR 1800 authorized with use of FD or AP or HUD to DA.	MALSR AS	MISSED APPROACH: Climb to 1200 then climbing left turn to 2800 on CMI VORTAC R-297 to LODGE INT/CMI VORTAC 13.2 DME and hold.
---	-------------	---

ATIS <b>124.85</b>	CHAMPAIGN APP CON ★ <b>121.35 285.65</b> (319°-138°) <b>132.85 290.225</b> (139°-318°)	CHAMPAIGN TOWER ★ <b>120.4</b> (CTAF) <b>0 229.4</b>	GND CON <b>121.8</b>	CLNC DEL <b>128.75</b>	UNICOM <b>122.95</b>
-----------------------	--	---	-------------------------	---------------------------	-------------------------

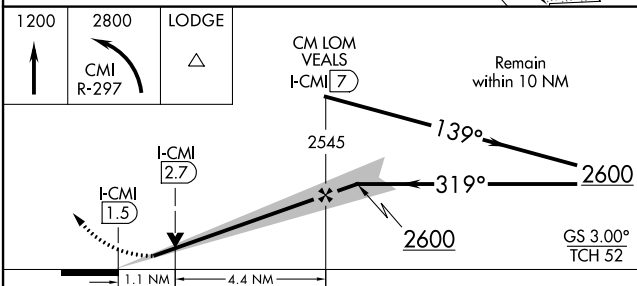
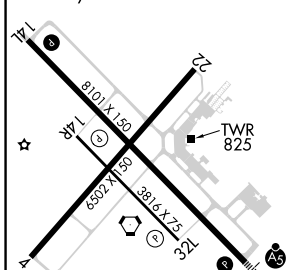


ALTERNATE MISSED APCH FIX

ADDRES AXC 117.2 Chan 119

R-199 R-169

ELEV 755	<b>D</b>	TDZE 750
HIRL Rwy 14L-32R		
MIRL Rwy 4-22		
MIRL Rwy 14R-32L		



CATEGORY	A	B	C	D
S-ILS 32R *	950/24 200 (200-½)			
S-LOC 32R	1160/24	410 (500-½)	1160/40	410 (500-¾)
CIRCLING	1240-1	485 (500-1)	1500-2¼ 745 (800-2¼)	1500-2½ 745 (800-2½)

CHAMPAIGN/URBANA, ILLINOIS  
Amdt 14A 25JAN24

UNIVERSITY OF ILLINOIS/WILLARD (CMI)  
40°02'N-88°17'W  
**ILS or LOC RWY 32R**

EC-3, 03 OCT 2024 to 31 OCT 2024

EC-3, 03 OCT 2024 to 31 OCT 2024