

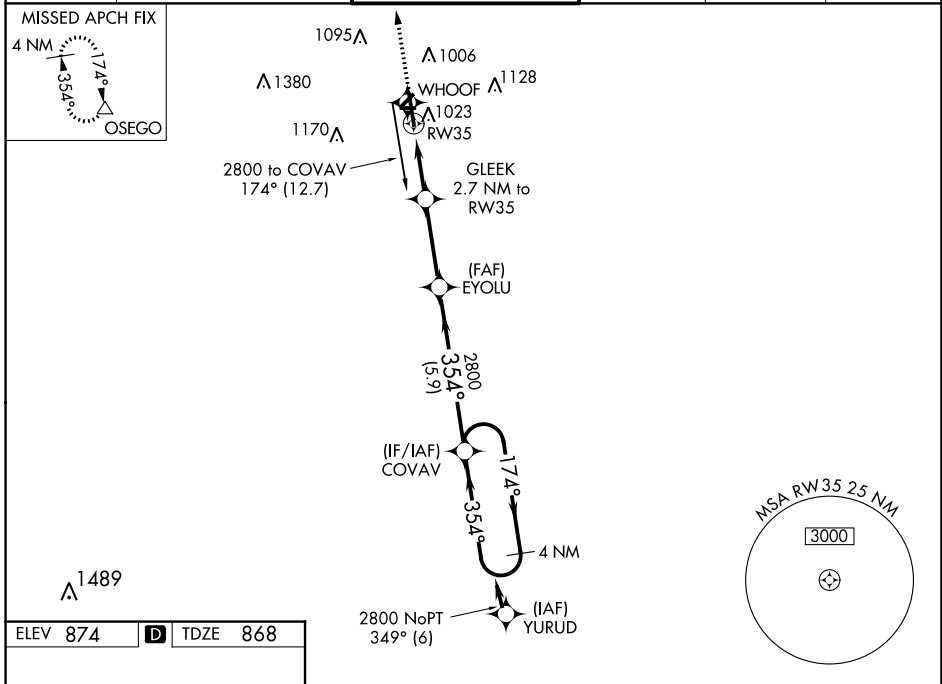
WAAS CH <b>61102</b> <b>W35A</b>	APP CRS <b>354°</b>	Rwy Idg <b>6502</b> TDZE <b>868</b> Apt Elev <b>874</b>
--	------------------------	---

# RNAV (GPS) RWY 35

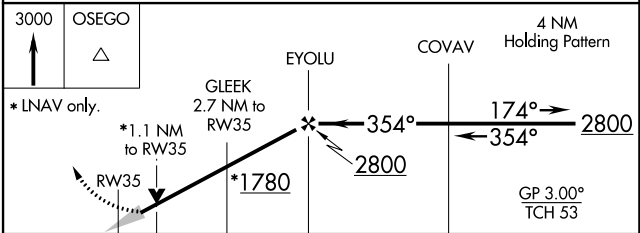
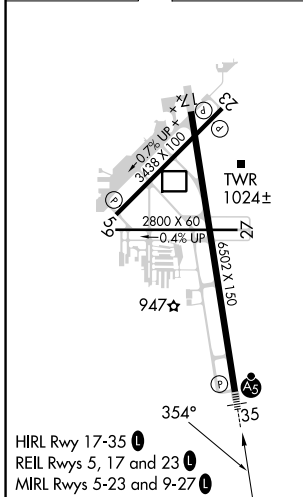
KALAMAZOO/BATTLE CREEK INTL (AZO)

RNP APCH.	<p><b>▽</b> For uncompensated Baro-VNAV systems, LNAV/VNAV NA below -19°C or above 54°C. Circling Rwy 5, 9, 17, 23, 27 NA at night. **RVR 1800 authorized with use of FD or AP or HUD to DA.</p>	MALSR	MISSED APPROACH: Climb to 3000 direct OSEGO and hold.
-----------	--	-------	--

ATIS <b>127.25</b>	GREAT LAKES APP CON * <b>121.2 239.25</b>	KALAMAZOO TOWER * <b>118.3 (CTAF) 0 257.875</b>	GND CON <b>121.9</b>	CLNC DEL <b>121.75</b>	UNICOM <b>122.95</b>
-----------------------	--	--	-------------------------	---------------------------	-------------------------



ELEV 874	<b>D</b>	TDZE 868
----------	----------	----------



CATEGORY	A	B	C	D
LPV DA **		1068/24	200 (200-½)	
LNAV/VNAV DA		1264/35	396 (400-¾)	
LNAV MDA	1280/24	412 (500-½)	1280/40	412 (500-¾)
<b>C</b> CIRCLING	1380-1	506 (600-1)	1480-1¾ 606 (700-1¾)	1480-2 606 (700-2)