

SE-3, 03 OCT 2024 to 31 OCT 2024

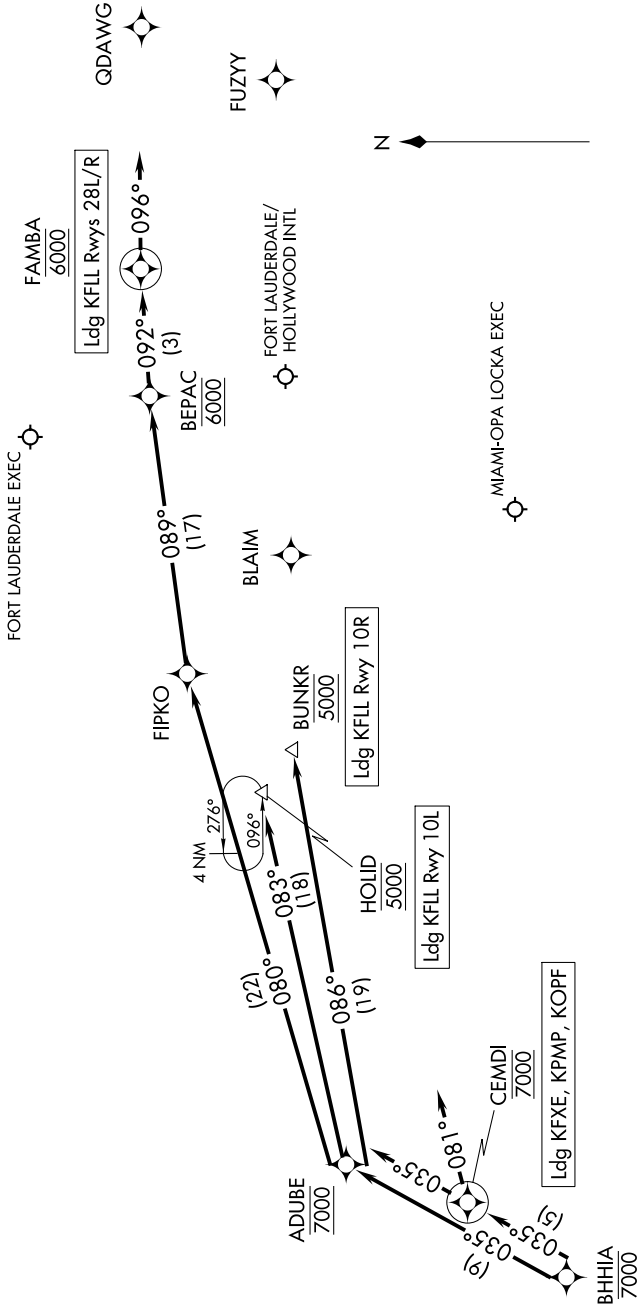
MIAMI APP CON
120.5 350.225
FLL D-ATIS
135.0
FXE ATIS
119.85
OPF ATIS
125.9
PMP ATIS
120.55

NOTE: Jet aircraft only.

NOTE: Expect "descend via" clearance and landing direction (east or west) by ARTCC. For vertical navigation planning, FLL landing east, select Rwy 10R, FLL landing west, select Rwy 28R.

RNAV 1-DME/DME/IRU or GPS.
RADAR required.

POMPANO BEACH AIRPARK



NOTE: Chart not to scale.

(NARRATIVE ON FOLLOWING PAGE)

SE-3, 03 OCT 2024 to 31 OCT 2024