

GLADZ THREE DEPARTURE (RNAV) Transition Routes

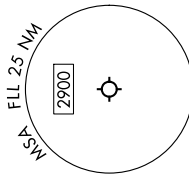
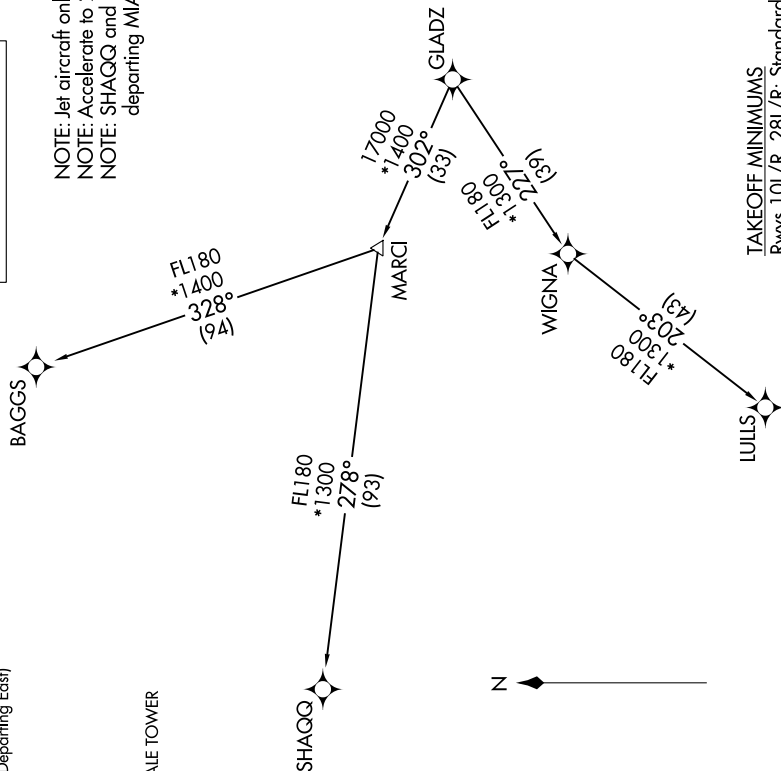
SE-3, 03 OCT 2024 to 31 OCT 2024

RNAV-1 DME/DME/IRU or GPS.
RADAR required.

TOP ALTITUDE:
ASSIGNED BY ATC

NOTE: Jet aircraft only
NOTE: Accelerate to 250K until leaving 10000, if unable, advise ATC.
NOTE: SHAGG and BAGGS transitions ATC assigned except aircraft departing MIA.

MIAMI DEP CON
119.45 290.325 (Departing West)
126.05 251.1 (Departing East)
D-ATIS
135.0
CLNC DEL
128.4
CPDLC
GND CON
121.4
FORT LAUDERDALE TOWER
119.3 257.8



TAKEOFF MINIMUMS
Rwys 10L/R, 28L/R: Standard with minimum climb of 500'/NM to 580.

(CONTINUED ON FOLLOWING PAGE)

NOTE: Chart not to scale.

SE-3, 03 OCT 2024 to 31 OCT 2024