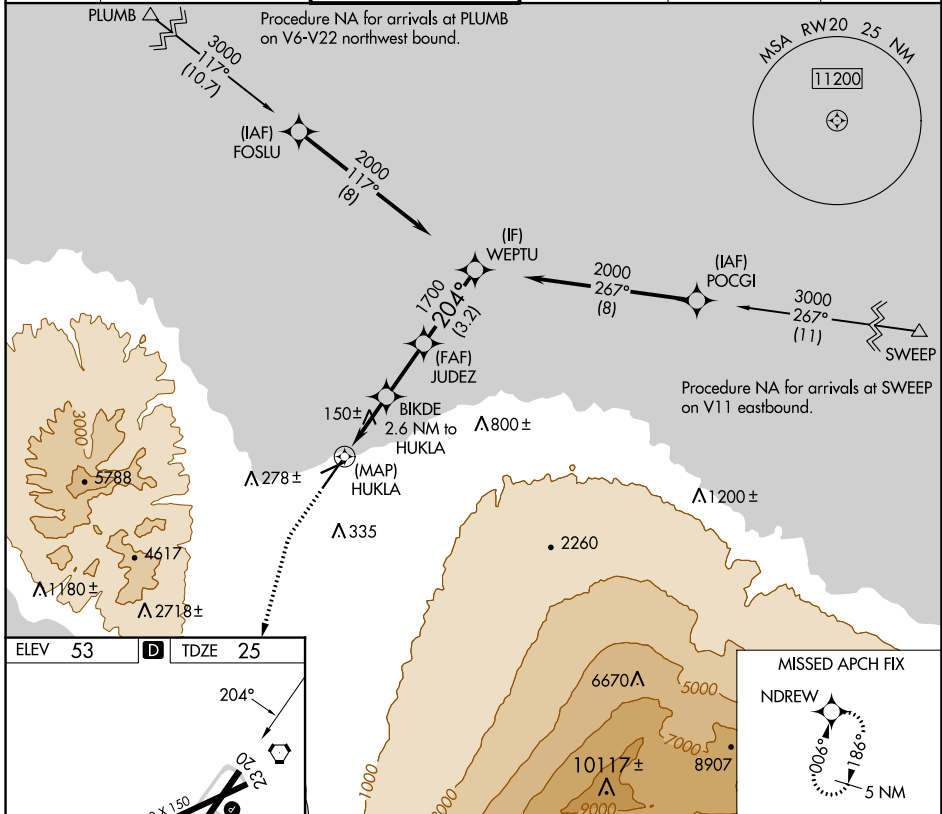


APP CRS	Rwy Idg	6995
204°	TDZE	25
	Apt Elev	53

RNAV (GPS) RWY 20

KAHALUI (OGG)(PHOG)

RNP APCH.		MISSED APPROACH: Climb to 500 then climbing left turn to 4300 direct NDREW and hold.			
When local altimeter setting not received, procedure NA.					
ATIS	HCF APPROACH	MAUI TOWER*	GND CON	CLNC DEL	UNICOM
128.6	120.2 322.4 (NORTH) 119.5 225.4 (SOUTH)	118.7 (CTAF) 0 279.6	121.9 279.6	120.6 290.5	122.95



PAC, 05 SEP 2024 to 31 OCT 2024

PAC, 05 SEP 2024 to 31 OCT 2024

ELEV 53	D	TDZE 25
---------	----------	---------

204°

0.6% GR

4980 X 150

8999 X 130

TWR 196

500 4300 NDREW

HIRL Rwy 2-20

MIRL Rwy 5-23

500	4300	NDREW	VGS1 and descent angles not coincident (VGS1 Angle 3.00/TCH 76)		WEPTU
MISSED APCH FIX NDREW 006° 186° 5 NM		HUKLA 940 0.8 NM to HUKLA BIKDE 2.6 NM to HUKLA JUDEZ 1700 WEPTU 2000 TCH 55			
0.2 0.8 1.8 NM 2.3 NM 3.2 NM					
CATEGORY	A	B	C	D	
LNAV MDA	400-1 375 (400-1)				
CIRCLING	500-1 447 (500-1)	620-1 567 (600-1)	740-2 687 (700-2)	1140-3 1087 (1100-3)	