

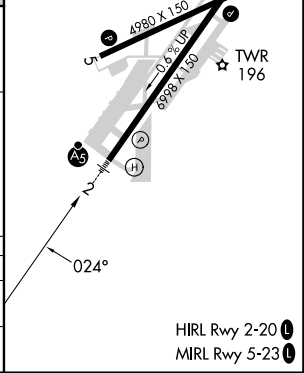
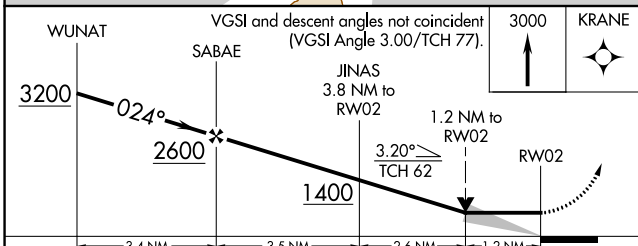
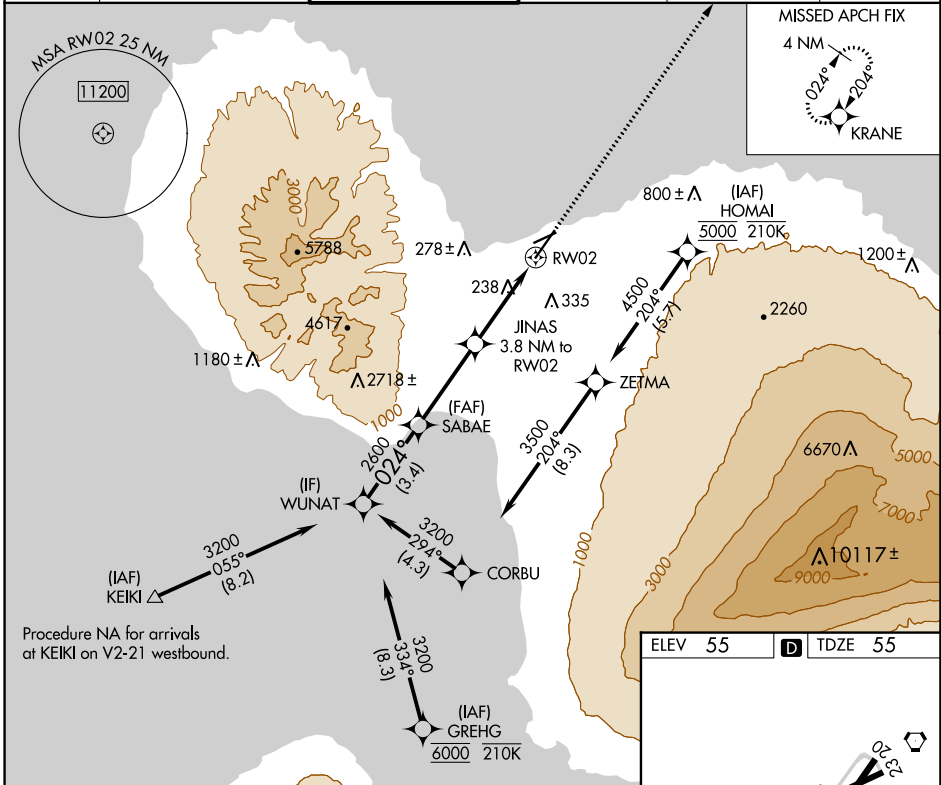
APP CRS	Rwy Idg	<b>6995</b>
<b>024°</b>	TDZE	<b>55</b>
	Apt Elev	<b>55</b>

# RNAV (GPS) Y RWY 2

KAHALUI (OGG)(PHOG)

RNP APCH-GPS.		MALSR	MISSED APPROACH: Climb to 3000 direct KRANE and hold.	
When Kahului altimeter setting not received, procedure NA.				

ATIS <b>128.6</b>	HCF APPROACH <b>120.2 322.4</b> (NORTH) <b>119.5 225.4</b> (SOUTH)	MAUI TOWER ★ <b>118.7</b> (CTAF) <b>0 279.6</b>	GND CON <b>121.9 279.6</b>	CLNC DEL <b>120.6 290.5</b>	UNICOM <b>122.95</b>
----------------------	--	--	-------------------------------	--------------------------------	-------------------------



CATEGORY	A	B	C	D
LNVA MDA	500-1/2 445 (500-1/2)		500-7/8 445 (500-7/8)	
CIRCLING	500-1 445 (500-1)	620-1 565 (600-1)	740-2 685 (700-2)	1140-3 1085 (1100-3)

PAC. 05 SEP 2024 to 31 OCT 2024

PAC. 05 SEP 2024 to 31 OCT 2024

HIRL Rwy 2-20  
MIRL Rwy 5-23