

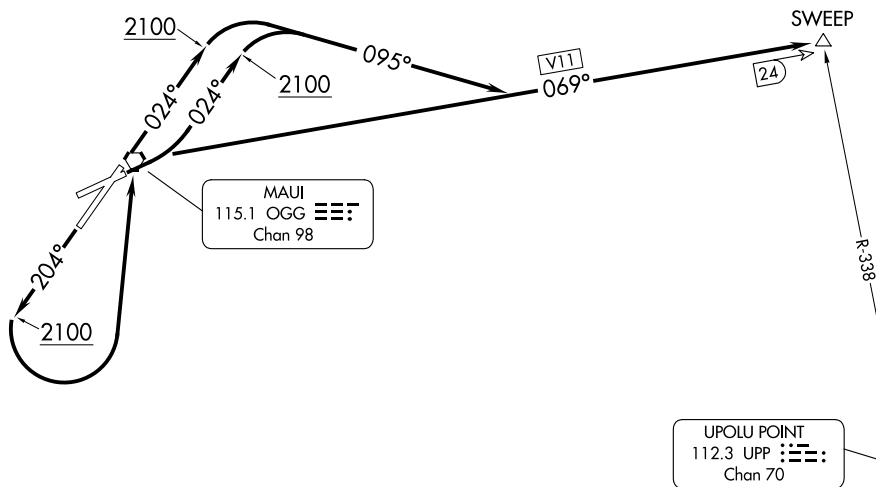
SWEEP TWO DEPARTURE

AL-762 (FAA)

KAHULUI (OGG)(PHOG)
KAHULUI, HAWAII

MAUI DEP CON
 NORTH 120.2 322.4
 SOUTH 119.5 225.4
 HCF APPROACH
 NORTH 120.2 322.4
 SOUTH 119.5 225.4
 ATIS
 128.6
 CLNC DEL
 120.6 290.5
 GND CON
 121.9 279.6
 MAUI TOWER ★
 118.7 (CTAF) 279.6

TOP ALTITUDE:
6000



TAKEOFF MINIMUMS

Rwy 23: NA Obstacle and ATC.

Rwys 2, 5: Standard with ATC climb of 480' per NM to 2100.

Rwy 20: Standard with minimum climb of 480' per NM to 2100.

NOTE: Chart not to scale.

DEPARTURE ROUTE DESCRIPTION

TAKEOFF RUNWAY 2: Climb heading 024° to 2100 then climbing right turn to 6000 via heading 095° to intercept OGG VORTAC R-069 (V11) to SWEEP INT/OGG 24 DME.

TAKEOFF RUNWAY 5: Climbing left turn heading 024° to 2100 then right turn to 6000 via heading 095° to intercept OGG VORTAC R-069 (V11) to SWEEP INT/OGG 24 DME.

TAKEOFF RUNWAY 20: Climb heading 204° to 2100 then climbing left turn to 6000 direct OGG VORTAC then via OGG R-069 (V11) to SWEEP INT/OGG 24 DME.

SWEEP TWO DEPARTURE

PAC: 05 SEP 2024 to 31 OCT 2024

PAC: 05 SEP 2024 to 31 OCT 2024