

LOC I-VCV <b>108.75</b>	APP CRS <b>166°</b>	Rwy Idg TDZE Apt Elev	<b>13052</b> <b>2830</b> <b>2885</b>
----------------------------	------------------------	-----------------------------	--

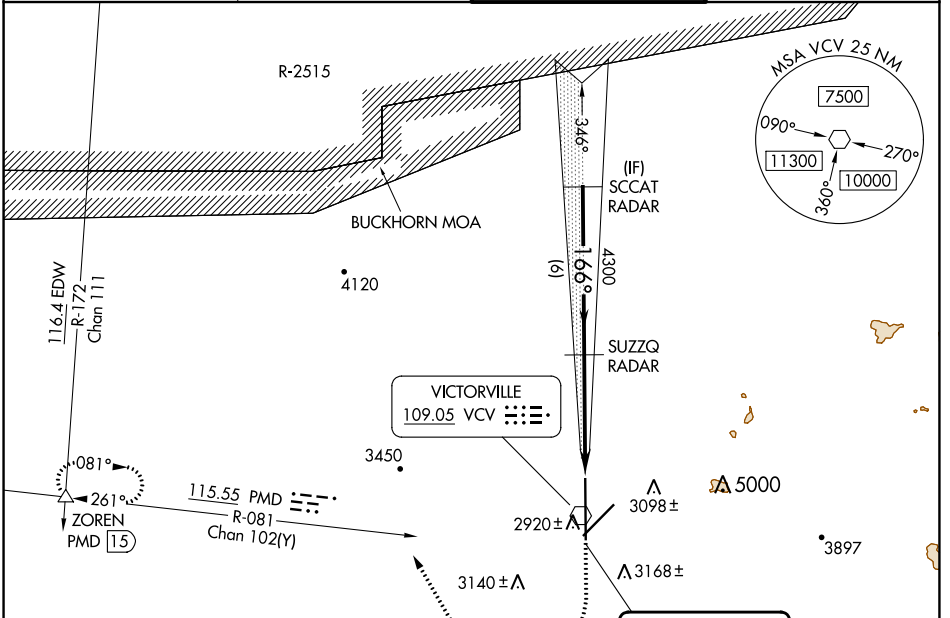
**LOC RWY 17**  
SOUTHERN CALIFORNIA LOGISTICS (VCV)

**RADAR required.**

**⚠** Circling NA for Cats C and D southeast of Rws 35 and 21. When local altimeter setting not received use Edwards AFB altimeter setting and increase all MDAs 160 feet, and Circling visibility Cat C ½ SM.

**MISSED APPROACH:** Climb to 3500 then climbing right turn to 6000 on heading 316° and on PMD VORTAC R-081 to ZOREN INT/PMD 15 DME and hold.

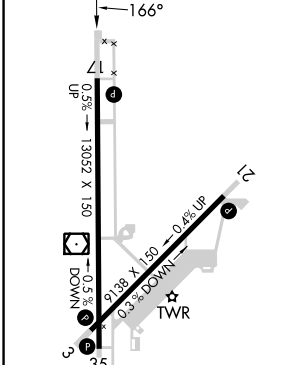
<b>ATIS ★</b> <b>135.475</b>	<b>JOSHUA APP CON</b> <b>124.55 363.0</b>	<b>VICTORVILLE TOWER ★</b> <b>118.35(CTAF) 282.225</b>	<b>GND CON</b> <b>124.45</b>
---------------------------------	--	---	---------------------------------



SW-3, 03 OCT 2024 to 31 OCT 2024

SW-3, 03 OCT 2024 to 31 OCT 2024

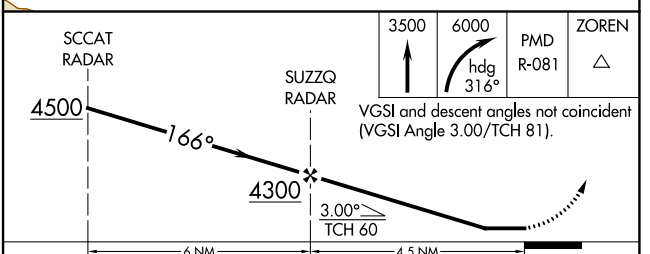
ELEV 2885	<b>D</b>	TDZE 2830
-----------	----------	-----------



REIL Rws 17 and 35  
HIRL Rws 3-21 and 17-35

FAF to MAP 4.5 NM

Knots	60	90	120	150	180
Min:Sec	4:30	3:00	2:15	1:48	1:30



CATEGORY	A	B	C	D
S-LOC 17	3180/55 350 (300-1)			
CIRCLING	3380-1 495 (500-1)	3420-1 535 (600-1)	3460-1½ 575 (600-1½)	3780-3 895 (900-3)