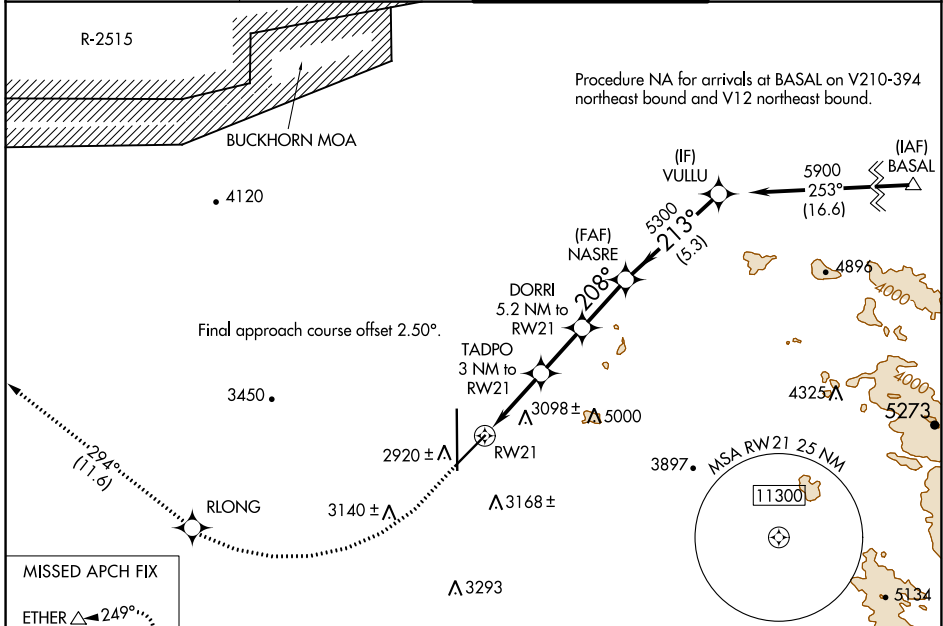


WAAS CH 82246 W21A	APP CRS 208°	Rwy Idg TDZE Apt Elev	9138 2858 2885
--	------------------------	-----------------------------	---

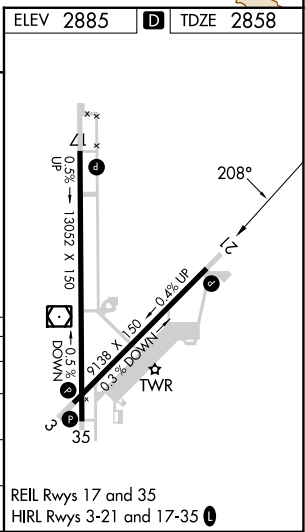
RNAV (GPS) RWY 21

SOUTHERN CALIFORNIA LOGISTICS (VCV)

RNP APCH - GPS.		MISSED APPROACH: Climb to 3500 then climbing right turn to 6000 direct RLONG and on track 294° to ETHER and hold.	
<p>⚠ Circling NA for C and D southeast of Rws 35 and 21. ⚠ For uncompensated Baro-VNAV systems, LNAV/VNAV NA below -20°C or above 54°C.</p>	<p>ATIS ★ 135.475</p>	<p>JOSHUA APP CON 124.55 363.0</p>	<p>VICTORVILLE TOWER ★ 118.35 (CTAF) 282.225</p>
		<p>GND CON 124.45</p>	



ELEV 2885	D	TDZE 2858				
3500	6000	RLONG	tr 294°	ETHER	VGSI and RNAV glidepath not coincident (VGSI Angle 3.00/TCH 85).	VULLU
↑	↷	⬠		△		
RW21		TADPO 3 NM to RW21	DORRI 5.2 NM to RW21	NASRE		VULLU
1.7 NM		1.3 NM	2.2 NM	2.3 NM	5.3 NM	
3860		4560	5300	5900		GP 3.00° TCH 60
CATEGORY	A	B	C	D		
LPV DA	3108-1		250 (300-1)			
LNAV/VNAV DA	3153-1		295 (300-1)			
LNAV MDA	3480-1	622 (600-1)	3480-1¾	622 (600-1¾)		
CIRCLING	3480-1	595 (600-1)	3480-1¾	3760-2¾	875 (900-2¾)	



SW-3, 03 OCT 2024 to 31 OCT 2024

SW-3, 03 OCT 2024 to 31 OCT 2024