

WAAS CH <b>42946</b> <b>W03A</b>	APP CRS <b>030°</b>	Rwy Idg TDZE Apt Elev	<b>9138</b> <b>2878</b> <b>2885</b>
--	------------------------	-----------------------------	---

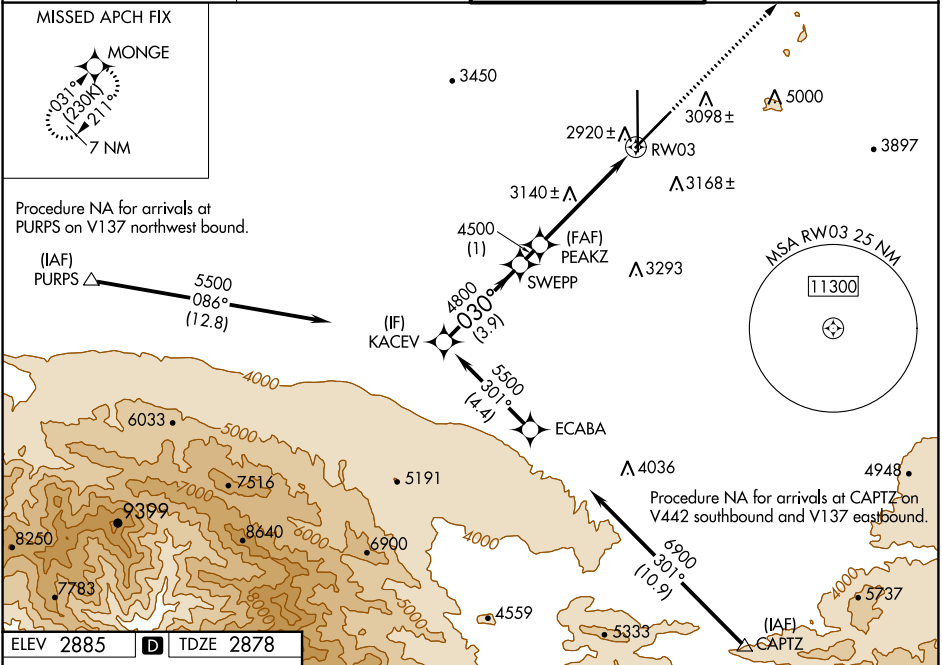
# RNAV (GPS) RWY 3

SOUTHERN CALIFORNIA LOGISTICS (VCV)

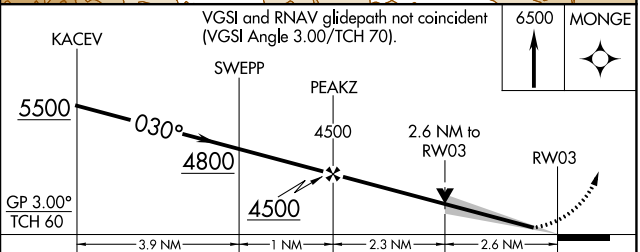
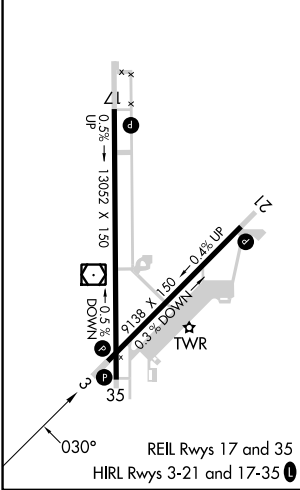
RNP APCH - GPS.  
 ⚠ For uncompensated Baro-VNAV systems, LNAV/VNAV NA below -20°C or above 54°C. Circling NA for Cats C and D southeast of Rwy 35 and 21.

MISSED APPROACH: Climb to 6500 direct MONGE and hold.  
 \*Missed approach requires minimum climb of 290 feet per NM to 4800.  
 #Missed approach requires minimum climb of 261 feet per NM to 5400.

ATIS ★ <b>135.475</b>	JOSHUA APP CON <b>124.55 363.0</b>	VICTORVILLE TOWER ★ <b>118.35 (CTAF) 282.225</b>	GND CON <b>124.45</b>
--------------------------	---------------------------------------	---	--------------------------



ELEV 2885	<b>D</b>	TDZE 2878
-----------	----------	-----------



CATEGORY	A	B	C	D
LPV DA*		3128-1	250 (300-1)	
LPV DA		3567-2	689 (700-2)	
LNAV/VNAV DA#		3628-2	750 (800-2)	
LNAV MDA	3980-1¼ 1102 (1100-1¼)	3980-1½ 1102 (1100-1½)	3980-3 1102 (1100-3)	
CIRCLING	3980-1¼ 1095 (1100-1¼)	3980-1½ 1095 (1100-1½)	3980-3 1095 (1100-3)	

SW-3, 03 OCT 2024 to 31 OCT 2024

SW-3, 03 OCT 2024 to 31 OCT 2024