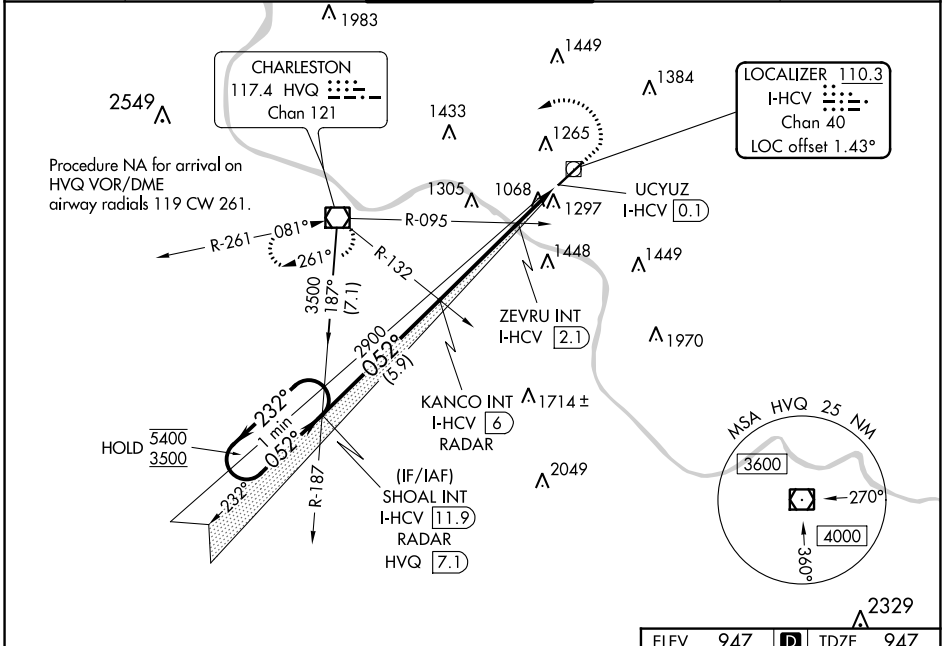


LOC/DME I-HCV <b>110.3</b> Chan <b>40</b>	APP CRS <b>052°</b>	Rwy Idg <b>6215</b> TDZE <b>947</b> Apt Elev <b>947</b>
---	------------------------	---

# ILS or LOC RWY 5

WEST VIRGINIA INTL YEAGER (CRW)

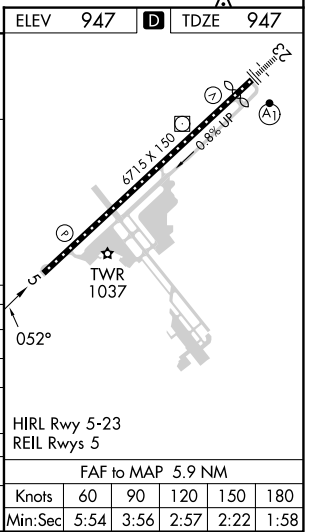
<p><b>Autopilot coupled approach NA below 1300.</b></p>		<p><b>MISSED APPROACH:</b> Climb to 1800 then climbing left turn to 3500 direct HVQ VOR/DME and hold.</p>		
ATIS <b>127.6</b>	CHARLESTON APP CON <b>124.1 269.125</b>	CHARLESTON TOWER <b>125.7 257.8</b>	GND CON <b>121.8 348.6</b>	CLNC DEL <b>118.55</b>



NE-4, 03 OCT 2024 to 31 OCT 2024

NE-4, 03 OCT 2024 to 31 OCT 2024

One Minute Holding Pattern	SHOAL INT I-HCV [11.9] RADAR	KANCO INT I-HCV [6] RADAR	ZEVRU INT I-HCV [2.1]	I-HCV DME ANTENNA	UCYUZ I-HCV [0.1]
5400 ← 232°	3500 → 052°	2900	1640		
GS 3.00° TCH 56		5.9 NM	3.9 NM	1 NM	1 NM 0.1
CATEGORY	A	B	C	D	
S-ILS 5	1197/40		250 (300-¾)		
S-LOC 5	1640/55	693 (700-1)	1640-2	693 (700-2)	
<b>C</b> CIRCLING	1640-1	693 (700-1)	1760-2½ 813 (900-2½)	1880-3 933 (1000-3)	
ZEVRU FIX MINIMUMS (DUAL VOR RECEIVERS OR DME REQUIRED)					
S-LOC 5	1320/55		373 (400-1)		
<b>C</b> CIRCLING	1600-1	653 (700-1)	1760-2½ 813 (900-2½)	1880-3 933 (1000-3)	



FAF to MAP 5.9 NM					
Knots	60	90	120	150	180
Min:Sec	5:54	3:56	2:57	2:22	1:58