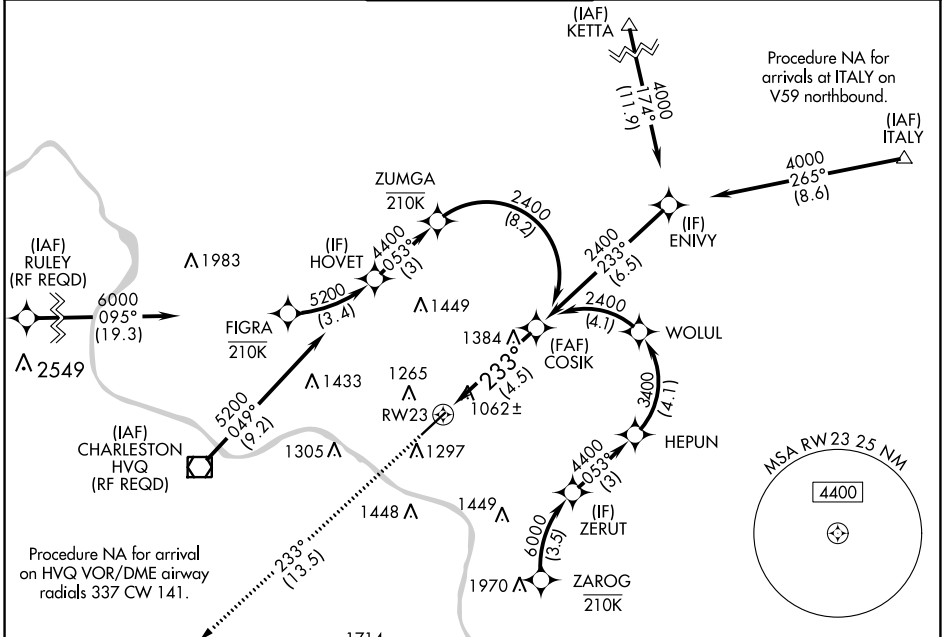


APP CRS	Rwy Idg	6215
233°	TDZE	931
	Apt Elev	947

RNAV (RNP) Z RWY 23

WEST VIRGINIA INTL YEAGER (CRW)

RNP AR APCH - GPS.		ALSF-1	MISSED APPROACH: Climb to 4000 on track 233° to CITMA and hold.	
For uncompensated Baro-VNAV systems, procedure NA below -15°C or above 54°C. For inop ALS, increase RNP 0.30 all Cats visibility to 1½ SM.				
ATIS	CHARLESTON APP CON	CHARLESTON TOWER	GND CON	CLNC DEL
127.6	124.1 269.125	125.7 257.8	121.8 348.6	118.55



NE-4, 03 OCT 2024 to 31 OCT 2024

NE-4, 03 OCT 2024 to 31 OCT 2024

ELEV 947	D	TDZE 931
----------	----------	----------

4000 CITMA
↑ tr 233°

See planview for multiple IF locations.

RW23
233°
2400
GP 3.00°
TCH 56

4.5 NM

CATEGORY	A	B	C	D
RNP 0.30 DA		1419/60	488 (500-1½)	

AUTHORIZATION REQUIRED

