

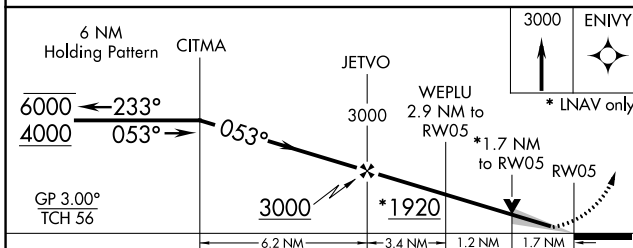
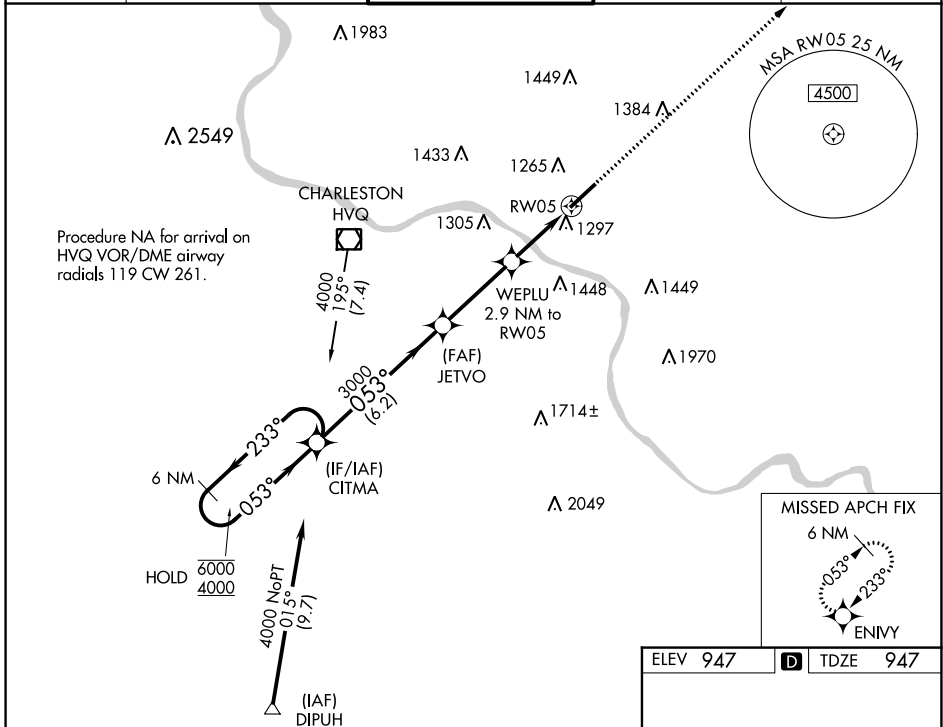
WAAS CH <b>87115</b> <b>W05A</b>	APP CRS <b>053°</b>	Rwy Idg TDZE Apt Elev	<b>6215</b> <b>947</b> <b>947</b>
--	------------------------	-----------------------------	---

# RNAV (GPS) Y RWY 5

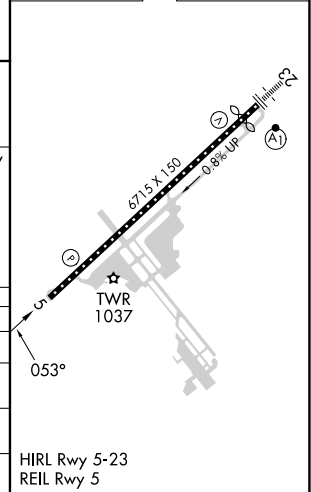
WEST VIRGINIA INTL YEAGER (CRW)

RNP APCH.		MISSED APPROACH: Climb to 3000 direct ENIVY and hold.	
<p><b>▽</b> <b>▲</b> For uncompensated Baro-VNAV systems, procedure NA below -17°C or above 54°C.</p>			

ATIS <b>127.6</b>	CHARLESTON APP CON <b>124.1 269.125</b>	CHARLESTON TOWER <b>125.7 257.8</b>	GND CON <b>121.8 348.6</b>	CLNC DEL <b>118.55</b>
----------------------	--	--	-------------------------------	---------------------------



ELEV 947	<b>D</b> TDZE 947
----------	-------------------



CATEGORY	A	B	C	D
LPV DA		1147/40	200 (200-¾)	
LNAV/VNAV DA		1584-1¾	637 (700-1¾)	
LNAV MDA	1560/55	613 (700-1)	1560-1¾	613 (700-1¾)
<b>C</b> CIRCLING	1600-1	653 (700-1)	1760-2½ 813 (900-2½)	1880-3 933 (1000-3)

NE-4, 03 OCT 2024 to 31 OCT 2024

NE-4, 03 OCT 2024 to 31 OCT 2024