

EASTOVER, SOUTH CAROLINA

# TACAN RWY 32

VORTAC MMT <b>113.2</b> Chan <b>79</b>	APCH CRS <b>328°</b>	Rwy Idg TDZE <b>243</b> Arprt Elev <b>254</b>	<b>9012</b>
--	-------------------------	---	-------------

[USAF]

MC ENTIRE JNGB (KMMT)

⚠ \* When ALS inop, increase CAT AB RVR to 55, vis to 1 mile, CAT CDE RVR to 60, vis to 1½ miles.

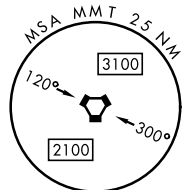
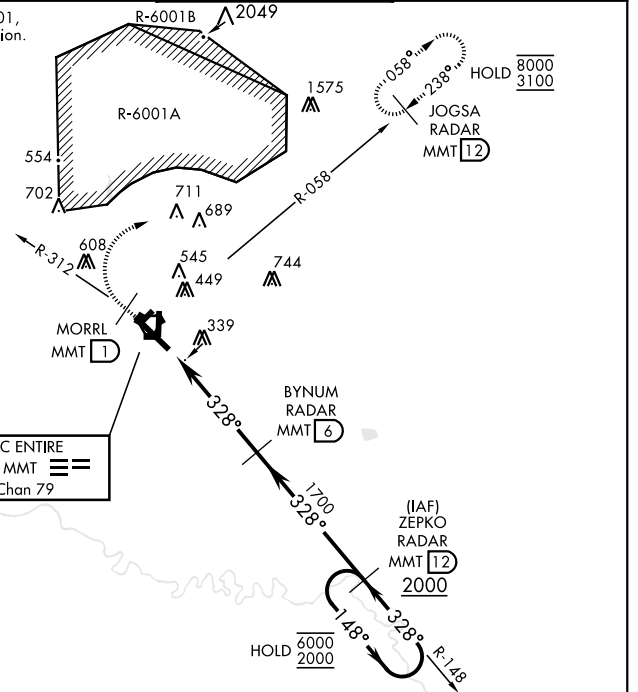


† MISSED APPROACH: Climb to 1100 direct MORRL/1 DME then climbing right turn to 3100 intercept MMT R-058 direct JOGSA/12 DME and hold.

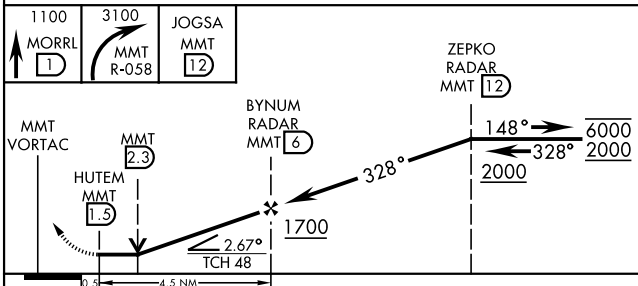
ATIS ★ <b>327.05</b>	SHAW APP CON <b>125.4 318.1</b>	TOWER ★ <b>132.4 (CTAF) 253.5</b>	GND CON <b>127.625 226.675</b>
-------------------------	------------------------------------	--------------------------------------	-----------------------------------

Remain within 4 nm of MMT to avoid R-6001, if unable expect 10 min delay for deactivation.

† Published missed approach requires deactivation of R-6001A/B.



EMERG SAFE ALT 100 NM 3800



ELEV	254	TDZE	243
------	-----	------	-----

Rwy 5H-23H, COPTER ONLY.  
HIRL Rwy 14-32  
MIRL Rwy 5H-23H  
REIL Rwy 14

FAF to MAP 4.5 NM

Knots	60	90	120	150	180
Min:Sec	4:30	3:00	2:15	1:48	1:30

CATEGORY	A	B	C	D	E
S-32 *	640/24 397 (400-½)		640/40 397 (400-¾)		
CIRCLING	740-1 486 (500-1)	840-1 586 (600-1)	880-1¼ 626 (700-1¾)	940-2¼ 686 (700-2¼)	1020-2¾ 766 (800-2¾)

EASTOVER, SOUTH CAROLINA

33°55'N-80°48'W

MC ENTIRE JNGB (KMMT)

Amdt 4 25MAY17

# TACAN RWY 32

SE-2, 03 OCT 2024 to 31 OCT 2024

SE-2, 03 OCT 2024 to 31 OCT 2024