

WAAS CH <b>82736</b> <b>W30A</b>	APP CRS <b>296°</b>	Rwy Idg TDZE Apt Elev	<b>6000</b> <b>1637</b> <b>1648</b>
--	------------------------	-----------------------------	---

# RNAV (GPS) RWY 30

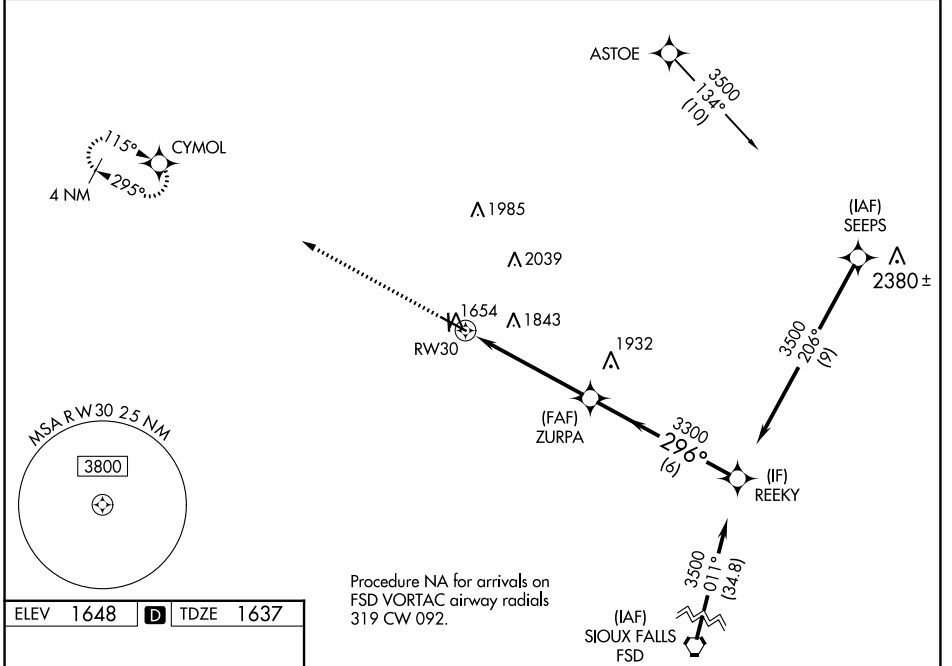
BROOKINGS RGNL (BKX)

RNP APCH.

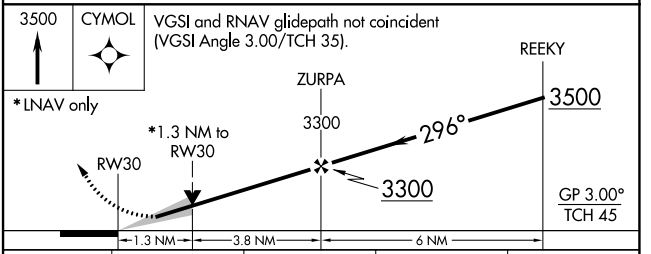
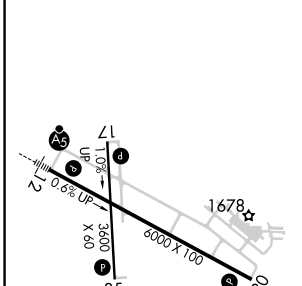
**▼** Circling Rwy 17 NA at night. For uncompensated Baro-VNAV systems, LNAV/VNAV NA below -18°C or above 54°C.  
**▲** Rwy 30 helicopter visibility reduction below 1 SM NA.

MISSED APPROACH: Climb to 3500 direct CYMOL and hold.

AWOS-3PT <b>119.925</b>	MINNEAPOLIS CENTER <b>132.05 317.4</b>	GCO <b>121.725</b>	UNICOM <b>123.0 (CTAF) 0</b>
----------------------------	---	-----------------------	---------------------------------



ELEV 1648	<b>D</b>	TDZE 1637
-----------	----------	-----------



CATEGORY	A	B	C	D
LPV DA		1887-1	250 (300-1)	
LNAV/VNAV DA		1968-1 $\frac{1}{8}$	331 (400-1 $\frac{1}{8}$ )	
LNAV MDA	2080-1	443 (500-1)	2080-1 $\frac{3}{8}$	443 (500-1 $\frac{3}{8}$ )
<b>C</b> CIRCLING	2140-1 492 (500-1)	2160-1 512 (600-1)	2340-2 692 (700-2)	2340-2 $\frac{1}{4}$ 692 (700-2 $\frac{1}{4}$ )

HIRL Rwy 12-30 **1**  
 MIRL Rwy 17-35 **1**  
 REIL Rwy 17, 30 and 35 **1**

NC-1, 03 OCT 2024 to 31 OCT 2024

NC-1, 03 OCT 2024 to 31 OCT 2024